

Datasheet for ABIN7192683

anti-STK32B antibody

2 Images

[Go to Product page](#)

Overview

Quantity:	100 µL
Target:	STK32B
Reactivity:	Human
Host:	Rabbit
Clonality:	Polyclonal
Conjugate:	This STK32B antibody is un-conjugated
Application:	ELISA, Immunohistochemistry (IHC)

Product Details

Immunogen:	Synthetic peptide of Human STK32B
Isotype:	IgG
Cross-Reactivity:	Human
Purification:	Antigen affinity purification

Target Details

Target:	STK32B
Alternative Name:	STK32B (STK32B Products)
Background:	Background: STK32B is a 414 amino acid protein that contains one protein kinase domain and belongs to the Ser/Thr protein kinase family. Using magnesium as a cofactor, YANK2 functions to catalyze the ATP-dependent phosphorylation of target proteins and may play a role in various signaling events throughout the cell. Multiple isoforms of YANK2 exist due to alternatively

Target Details

splicing events.

Aliases: 2510009F08Rik antibody, gene for serine/threonine protein kinase antibody, HSA250839 antibody, PRO9744 antibody, Serine/threonine kinase 32B antibody, Serine/threonine-protein kinase 32B antibody, ST32B_HUMAN antibody, STK32 antibody, STK32B antibody, STKG6 antibody, UNQ3003 antibody, YANK 2 antibody, YANK2 antibody, Yet another novel kinase 2 antibody

UniProt: [Q9NY57](#)

Application Details

Application Notes: ELISA:1:2000-1:5000, IHC:1:25-1:100,

Restrictions: For Research Use only

Handling

Format: Liquid

Buffer: -20 °C, pH 7.4 PBS, 0.05 % Sodium azide, 40 % Glycerol

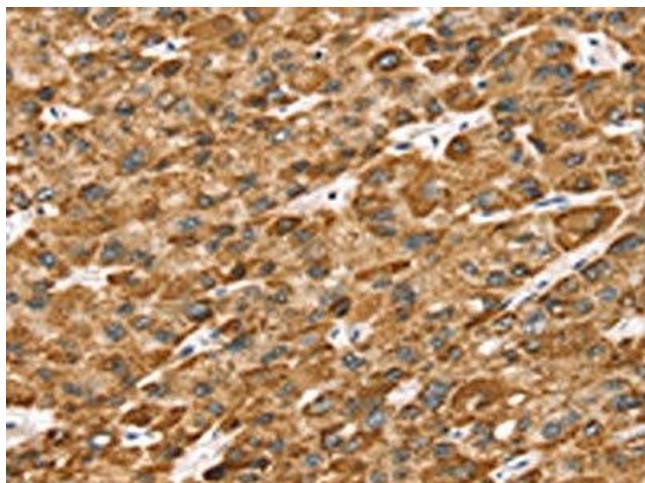
Preservative: Sodium azide

Precaution of Use: This product contains Sodium azide: a POISONOUS AND HAZARDOUS SUBSTANCE which should be handled by trained staff only.

Storage: -20 °C, -80 °C

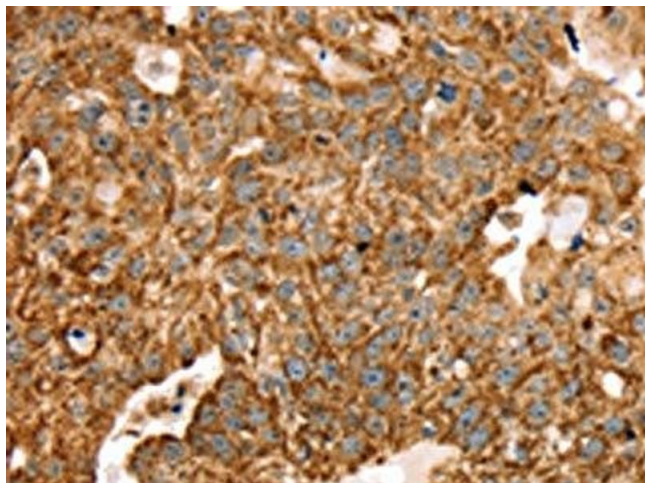
Storage Comment: Upon receipt, store at -20°C or -80°C. Avoid repeated freeze.

Images



Immunohistochemistry

Image 1. The image on the left is immunohistochemistry of paraffin-embedded Human liver cancer tissue using ABIN7192683(STK32B Antibody) at dilution 1/25, on the right is treated with synthetic peptide. (Original magnification: x200)



Immunohistochemistry

Image 2. The image on the left is immunohistochemistry of paraffin-embedded Human breast cancer tissue using ABIN7192683(STK32B Antibody) at dilution 1/25, on the right is treated with synthetic peptide. (Original magnification: x200)