

Datasheet for ABIN7192709

anti-SYCP1 antibody[Go to Product page](#)**1** Image

Overview

| | |
|--------------|--------------------------------------|
| Quantity: | 100 µL |
| Target: | SYCP1 |
| Reactivity: | Human |
| Host: | Rabbit |
| Clonality: | Polyclonal |
| Conjugate: | This SYCP1 antibody is un-conjugated |
| Application: | ELISA, Immunohistochemistry (IHC) |

Product Details

| | |
|-------------------|----------------------------------|
| Immunogen: | Synthetic peptide of Human SYCP1 |
| Isotype: | IgG |
| Cross-Reactivity: | Human |
| Purification: | Antigen affinity purification |

Target Details

| | |
|-------------------|-------------------------------------------------------------------------------------------------------------------------------------------------------------------------------------------------------------------------------------------------------------------------------------------------------------------------------------------------------------|
| Target: | SYCP1 |
| Alternative Name: | SYCP1 (SYCP1 Products) |
| Background: | Background: The synaptonemal complex protein 1 (SCP-1), also known as SYCP1(A), SYN1(I) and HOM-TES-14, is a protein product of human chromosome 1p13-p12. SCP-1 is a major component of the transverse filaments of synaptonemal complexes and functions by pairing homologous chromosomes during meiotic prophase in spermatocytes, which is an essential |

Target Details

step for the generation of haploid cells in meiosis I. SCP-1 is expressed in the testis, adult brain, some malignant gliomas, breast, renal cell and ovarian cancer. SCP-1 is known to be selectively expressed during the meiotic prophase of spermatocytes and shows cell cycle phase-independent nuclear expression in cancer cells.

Aliases: Cancer/testis antigen 8 antibody, CT8 antibody, HOM TES 14 antibody, MGC104417 antibody, SCP 1 antibody, SCP-1 antibody, SCP1 antibody, SYCP 1 antibody, Sycp1 antibody, SYCP1_HUMAN antibody, Synaptonemal complex protein 1 antibody, Testicular tissue protein Li 191 antibody

UniProt: [Q15431](#)

Application Details

Application Notes: ELISA:1:1000-1:2000, IHC:1:25-1:100,

Restrictions: For Research Use only

Handling

Format: Liquid

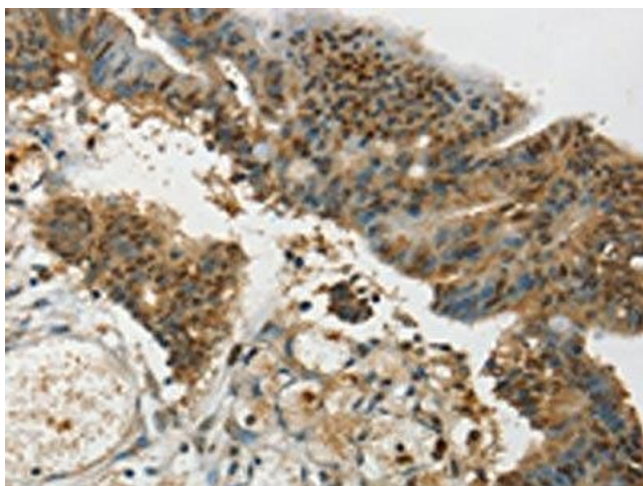
Buffer: -20 °C, pH 7.4 PBS, 0.05 % Sodium azide, 40 % Glycerol

Preservative: Sodium azide

Precaution of Use: This product contains Sodium azide: a POISONOUS AND HAZARDOUS SUBSTANCE which should be handled by trained staff only.

Storage: -20 °C, -80 °C

Storage Comment: Upon receipt, store at -20°C or -80°C. Avoid repeated freeze.



Immunohistochemistry

Image 1. The image on the left is immunohistochemistry of paraffin-embedded Human colon cancer tissue using ABIN7192709(SYCP1 Antibody) at dilution 1/35, on the right is treated with synthetic peptide. (Original magnification: x200)