

Datasheet for ABIN7192739

**anti-TBC1D21 antibody****2** Images[Go to Product page](#)

## Overview

Quantity:	100 µL
Target:	TBC1D21
Reactivity:	Human
Host:	Rabbit
Clonality:	Polyclonal
Conjugate:	This TBC1D21 antibody is un-conjugated
Application:	Immunohistochemistry (IHC), ELISA

## Product Details

Immunogen:	Synthetic peptide of Human TBC1D21
Isotype:	IgG
Cross-Reactivity:	Human
Purification:	Antigen affinity purification

## Target Details

Target:	TBC1D21
Alternative Name:	TBC1D21 ( <a href="#">TBC1D21 Products</a> )
Background:	Background: TBC1D21 gene (TBC1 domain family member 21) is located on human chromosome 15, acts as a GTPase-activating protein for Rab family proteins. Rab family proteins comprise G proteins of the Ras superfamily that belong to a protein superfamily of small GTPases. Approximately 70 types of Rabs have been identified in humans. They are

## Target Details

regulators of membrane traffic, including vesicle formation, vesicle movement along actin and tubulin networks, and membrane fusion.

Aliases: TBC1D21 antibody, TBC1 domain family member 21 antibody

UniProt: [Q8IYX1](#)

## Application Details

Application Notes: ELISA:1:2000-1:5000, IHC:1:25-1:100,

Restrictions: For Research Use only

## Handling

Format: Liquid

Buffer: -20 °C, pH 7.4 PBS, 0.05 % Sodium azide, 40 % Glycerol

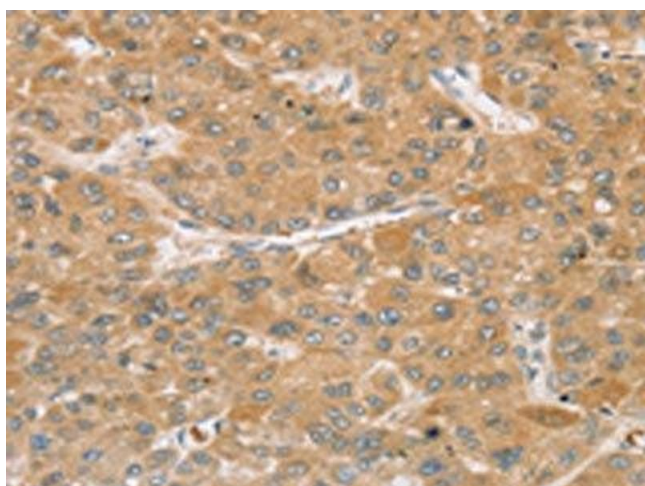
Preservative: Sodium azide

Precaution of Use: This product contains Sodium azide: a POISONOUS AND HAZARDOUS SUBSTANCE which should be handled by trained staff only.

Storage: -20 °C,-80 °C

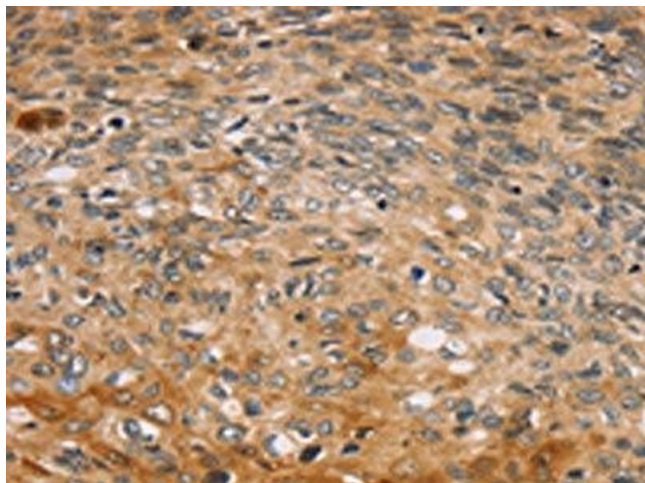
Storage Comment: Upon receipt, store at -20°C or -80°C. Avoid repeated freeze.

## Images



### Immunohistochemistry

**Image 1.** The image on the left is immunohistochemistry of paraffin-embedded Human liver cancer tissue using ABIN7192739(TBC1D21 Antibody) at dilution 1/30, on the right is treated with synthetic peptide. (Original magnification: x200)



#### Immunohistochemistry

**Image 2.** The image on the left is immunohistochemistry of paraffin-embedded Human esophagus cancer tissue using ABIN7192739(TBC1D21 Antibody) at dilution 1/30, on the right is treated with synthetic peptide. (Original magnification: x200)