



[Go to Product page](#)

Datasheet for ABIN7192749
anti-TCERG1L antibody

2 Images

Overview

Quantity:	100 µL
Target:	TCERG1L
Reactivity:	Human
Host:	Rabbit
Clonality:	Polyclonal
Conjugate:	This TCERG1L antibody is un-conjugated
Application:	ELISA, Immunohistochemistry (IHC)

Product Details

Immunogen:	Synthetic peptide of Human TCERG1L
Isotype:	IgG
Cross-Reactivity:	Human
Purification:	Antigen affinity purification

Target Details

Target:	TCERG1L
Alternative Name:	TCERG1L (TCERG1L Products)
Background:	Background: TCERG1L (transcription elongation regulator 1-like protein) is a 586 amino acid protein that contains two FF domains and two WW domains. The gene that encodes TCERG1L contains just over 219,000 bases and maps to human chromosome 10q26.3. Spanning nearly 135 million base pairs and encoding nearly 1,200 genes, chromosome 10 makes up

Target Details

approximately 4.5 % of the human genome. Several protein-coding genes, including those that encode chemokines, cadherins, excision repair proteins, early growth response factors (Egrs) and fibroblast growth receptors (FGFRs), are located on chromosome 10.

Aliases: TCERG1L antibody, Transcription elongation regulator 1-like protein antibody

UniProt: [Q5VWI1](#)

Application Details

Application Notes: ELISA:1:2000-1:5000, IHC:1:25-1:100,

Restrictions: For Research Use only

Handling

Format: Liquid

Buffer: -20 °C, pH 7.4 PBS, 0.05 % Sodium azide, 40 % Glycerol

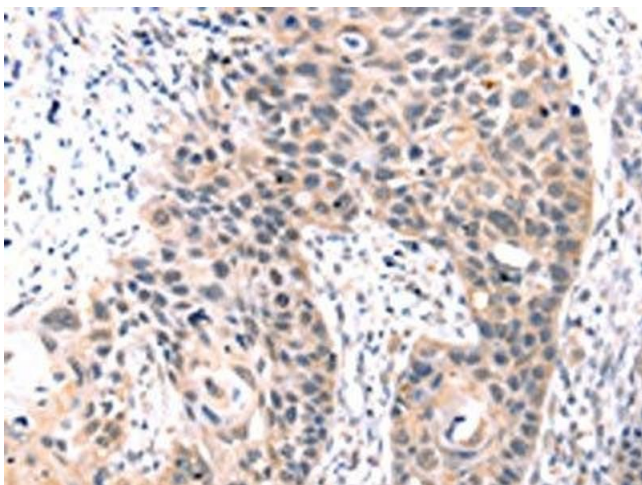
Preservative: Sodium azide

Precaution of Use: This product contains Sodium azide: a POISONOUS AND HAZARDOUS SUBSTANCE which should be handled by trained staff only.

Storage: -20 °C,-80 °C

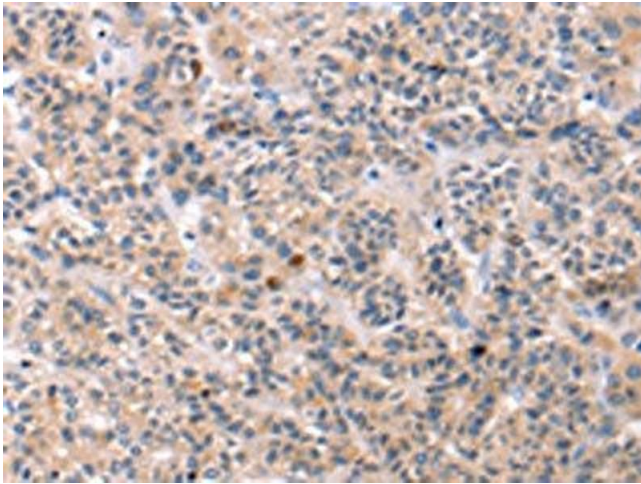
Storage Comment: Upon receipt, store at -20°C or -80°C. Avoid repeated freeze.

Images



Immunohistochemistry

Image 1. The image on the left is immunohistochemistry of paraffin-embedded Human esophagus cancer tissue using ABIN7192749(TCERG1L Antibody) at dilution 1/30, on the right is treated with synthetic peptide. (Original magnification: x200)



Immunohistochemistry

Image 2. The image on the left is immunohistochemistry of paraffin-embedded Human liver cancer tissue using ABIN7192749(TCERG1L Antibody) at dilution 1/30, on the right is treated with synthetic peptide. (Original magnification: x200)