



Datasheet for ABIN7192784  
**anti-Transglutaminase 7 antibody**



[Go to Product page](#)

2 Images

Overview

Quantity:	100 µL
Target:	Transglutaminase 7 (TGM7)
Reactivity:	Human
Host:	Rabbit
Clonality:	Polyclonal
Application:	ELISA, Immunohistochemistry (IHC)

Product Details

Immunogen:	Synthetic peptide of Human TGM7
Isotype:	IgG
Cross-Reactivity:	Human
Purification:	Antigen affinity purification

Target Details

Target:	Transglutaminase 7 (TGM7)
Alternative Name:	TGM7 ( <a href="#">TGM7 Products</a> )
Background:	Background: Transglutaminases (TGM, EC 2.3.2.13) are a family of structurally and functionally related enzymes that stabilize protein assemblies through the formation of gamma-glutamyl-epsilon lysine crosslinks. For additional background information on transglutaminases, see TGM1 (MIM 190195).  Aliases: Protein glutamine gamma glutamyltransferase Z antibody, Protein-glutamine gamma-

## Target Details

glutamytransferase Z antibody, TG(Z) antibody, TGase 7 antibody, TGase Z antibody, TGase-7 antibody, TGase7 antibody, TGM7 antibody, TGM7\_HUMAN antibody, TGMZ antibody, TGZ antibody, Transglutaminase 7 antibody, Transglutaminase Z antibody, Transglutaminase-7 antibody

UniProt: [Q96PF1](#)

## Application Details

Application Notes: ELISA:1:2000-1:5000, IHC:1:25-1:100,

Restrictions: For Research Use only

## Handling

Format: Liquid

Buffer: -20 °C, pH 7.4 PBS, 0.05 % Sodium azide, 40 % Glycerol

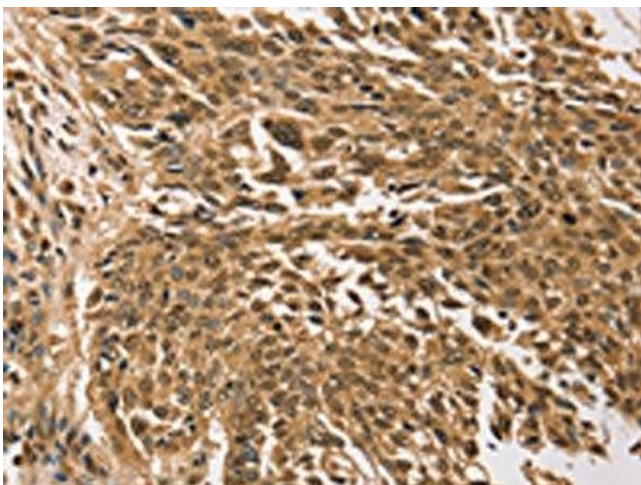
Preservative: Sodium azide

Precaution of Use: This product contains Sodium azide: a POISONOUS AND HAZARDOUS SUBSTANCE which should be handled by trained staff only.

Storage: -20 °C,-80 °C

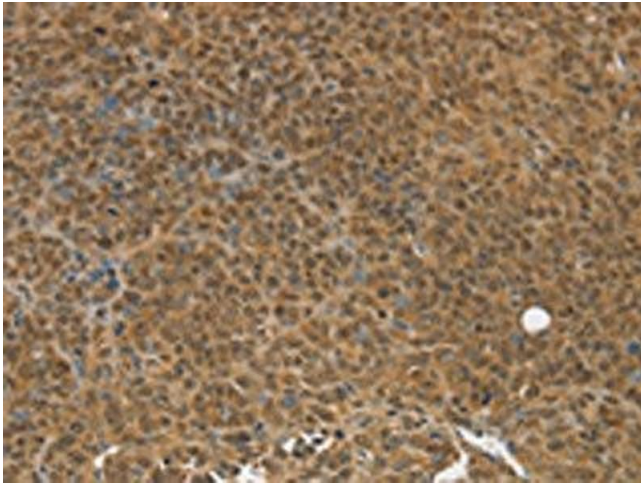
Storage Comment: Upon receipt, store at -20°C or -80°C. Avoid repeated freeze.

## Images



### Immunohistochemistry

**Image 1.** The image on the left is immunohistochemistry of paraffin-embedded Human lung cancer tissue using ABIN7192784(TGM7 Antibody) at dilution 1/30, on the right is treated with synthetic peptide. (Original magnification: x200)



### Immunohistochemistry

**Image 2.** The image on the left is immunohistochemistry of paraffin-embedded Human ovarian cancer tissue using ABIN7192784(TGM7 Antibody) at dilution 1/30, on the right is treated with synthetic peptide. (Original magnification: x200)