



Datasheet for ABIN7192788
anti-THAP9 antibody



[Go to Product page](#)

1 Image

Overview

Quantity:	100 µL
Target:	THAP9
Reactivity:	Human
Host:	Rabbit
Clonality:	Polyclonal
Conjugate:	This THAP9 antibody is un-conjugated
Application:	ELISA, Immunohistochemistry (IHC)

Product Details

Immunogen:	Synthetic peptide of Human THAP9
Isotype:	IgG
Cross-Reactivity:	Human
Purification:	Antigen affinity purification

Target Details

Target:	THAP9
Alternative Name:	THAP9 (THAP9 Products)
Background:	Background: THAP9 (THAP domain-containing protein 9) is a 903 amino acid protein that contains one THAP-type zinc finger. The gene that encodes THAP9 contains roughly 19,448 bases and maps to human chromosome 4q21.22. Chromosome 4 represents approximately 6 % of the human genome and contains nearly 900 genes. Notably, the Huntingtin gene, which

Target Details

is found to encode an expanded glutamine tract in cases of Huntington's disease, is on chromosome 4. FGFR-3 is also encoded on chromosome 4 and has been associated with thanatophoric dwarfism, achondroplasia, Muenke syndrome and bladder cancer. Chromosome 4 is also tied to Ellis-van Creveld syndrome, methylmalonic acidemia and polycystic kidney disease.

Aliases: THAP domain containing 9 antibody, THAP domain-containing protein 9 antibody, THAP9 antibody, THAP9_HUMAN antibody

UniProt: [Q9H5L6](#)

Application Details

Application Notes: ELISA:1:2000-1:5000, IHC:1:25-1:100,

Restrictions: For Research Use only

Handling

Format: Liquid

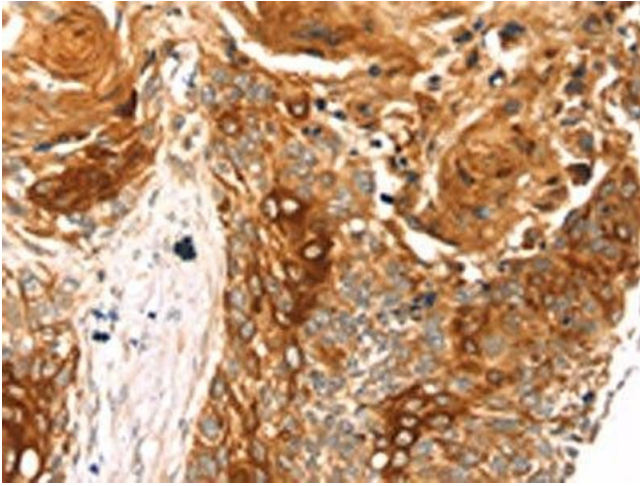
Buffer: -20 °C, pH 7.4 PBS, 0.05 % Sodium azide, 40 % Glycerol

Preservative: Sodium azide

Precaution of Use: This product contains Sodium azide: a POISONOUS AND HAZARDOUS SUBSTANCE which should be handled by trained staff only.

Storage: -20 °C,-80 °C

Storage Comment: Upon receipt, store at -20°C or -80°C. Avoid repeated freeze.



Immunohistochemistry

Image 1. The image on the left is immunohistochemistry of paraffin-embedded Human esophagus cancer tissue using ABIN7192788 (THAP9 Antibody) at dilution 1/20, on the right is treated with synthetic peptide. (Original magnification: x200)