

Datasheet for ABIN7192874

anti-TPR antibody[Go to Product page](#)**1** Image

Overview

Quantity:	100 µL
Target:	TPR
Reactivity:	Human
Host:	Rabbit
Clonality:	Polyclonal
Conjugate:	This TPR antibody is un-conjugated
Application:	Immunohistochemistry (IHC), ELISA

Product Details

Immunogen:	Synthetic peptide of Human TPR
Isotype:	IgG
Cross-Reactivity:	Human, Mouse, Rat
Purification:	Antigen affinity purification

Target Details

Target:	TPR
Alternative Name:	TPR (TPR Products)
Background:	Background: This gene encodes a large coiled-coil protein that forms intranuclear filaments attached to the inner surface of nuclear pore complexes (NPCs). The protein directly interacts with several components of the NPC. It is required for the nuclear export of mRNAs and some proteins. Oncogenic fusions of the 5' end of this gene with several different kinase genes occur

Target Details

in some neoplasias.

Aliases: Nucleoprotein TPR antibody, tpr antibody, TPR_HUMAN antibody, translocated promoter region (to activated MET oncogene) antibody

UniProt: [P12270](#)

Application Details

Application Notes: ELISA:1:2000-1:5000, IHC:1:25-1:100,

Restrictions: For Research Use only

Handling

Format: Liquid

Buffer: -20 °C, pH 7.4 PBS, 0.05 % Sodium azide, 40 % Glycerol

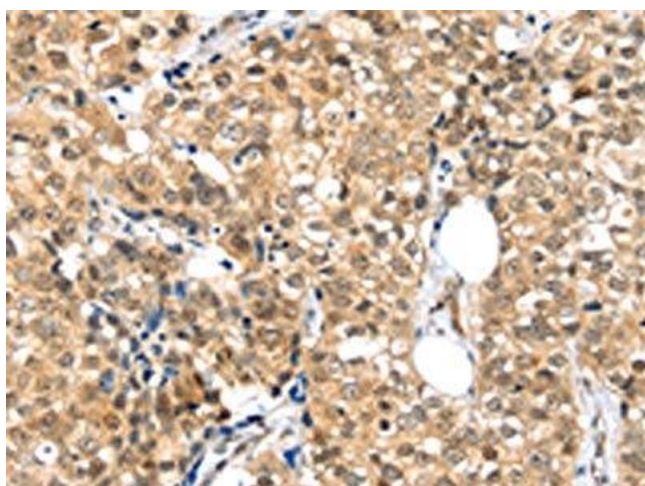
Preservative: Sodium azide

Precaution of Use: This product contains Sodium azide: a POISONOUS AND HAZARDOUS SUBSTANCE which should be handled by trained staff only.

Storage: -20 °C,-80 °C

Storage Comment: Upon receipt, store at -20°C or -80°C. Avoid repeated freeze.

Images



Immunohistochemistry

Image 1. The image on the left is immunohistochemistry of paraffin-embedded Human breast cancer tissue using ABIN7192874(TPR Antibody) at dilution 1/20, on the right is treated with synthetic peptide. (Original magnification: x200)