



[Go to Product page](#)

Datasheet for ABIN7192908  
**anti-TRIM47 antibody**

2 Images

Overview

Quantity:	100 µL
Target:	TRIM47
Reactivity:	Human
Host:	Rabbit
Clonality:	Polyclonal
Conjugate:	This TRIM47 antibody is un-conjugated
Application:	ELISA, Immunohistochemistry (IHC)

Product Details

Immunogen:	Synthetic peptide of Human TRIM47
Isotype:	IgG
Cross-Reactivity:	Human, Mouse
Purification:	Antigen affinity purification

Target Details

Target:	TRIM47
Alternative Name:	TRIM47 ( <a href="#">TRIM47 Products</a> )
Background:	Background: TRIM47 (tripartite motif-containing 47), also known as GOA (Gene overexpressed in astrocytoma protein) or RNF100 (RING finger protein 100), is a 638 amino acid protein that localizes to both cytoplasm and nucleus and belongs to the TRIM/RBCC family. While TRIM47 expression is low in most tissues, it is highly expressed in kidney tubular cells and

## Target Details

overexpressed in astrocytoma tumor cells.

Aliases: TRIM47 antibody, GOA antibody, RNF100 antibody, E3 ubiquitin-protein ligase TRIM47 antibody, EC 2.3.2.27 antibody, Gene overexpressed in astrocytoma protein antibody, RING finger protein 100 antibody, Tripartite motif-containing protein 47 antibody

UniProt: [Q96LD4](#)

## Application Details

Application Notes: ELISA:1:1000-1:2000, IHC:1:10-1:50,

Restrictions: For Research Use only

## Handling

Format: Liquid

Buffer: -20 °C, pH 7.4 PBS, 0.05 % Sodium azide, 40 % Glycerol

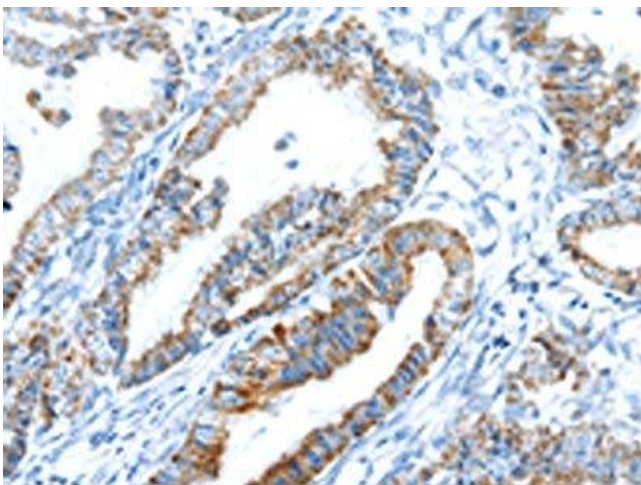
Preservative: Sodium azide

Precaution of Use: This product contains Sodium azide: a POISONOUS AND HAZARDOUS SUBSTANCE which should be handled by trained staff only.

Storage: -20 °C,-80 °C

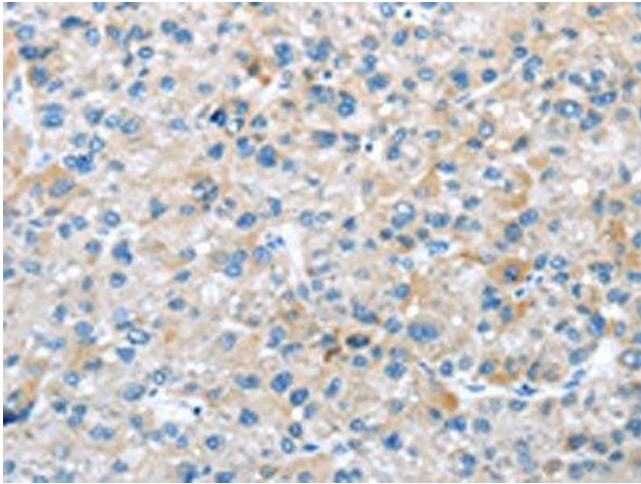
Storage Comment: Upon receipt, store at -20°C or -80°C. Avoid repeated freeze.

## Images



### Immunohistochemistry

**Image 1.** The image on the left is immunohistochemistry of paraffin-embedded Human esophagus cancer tissue using ABIN7192908(TRIM47 Antibody) at dilution 1/20, on the right is treated with synthetic peptide. (Original magnification: x200)



### Immunohistochemistry

**Image 2.** The image on the left is immunohistochemistry of paraffin-embedded Human liver cancer tissue using ABIN7192908 (TRIM47 Antibody) at dilution 1/20, on the right is treated with synthetic peptide. (Original magnification: x200)