

Datasheet for ABIN7192921

**anti-TRPM3 antibody**[Go to Product page](#)**1** Image

## Overview

Quantity:	100 µL
Target:	TRPM3
Reactivity:	Human
Host:	Rabbit
Clonality:	Polyclonal
Conjugate:	This TRPM3 antibody is un-conjugated
Application:	ELISA, Immunohistochemistry (IHC)

## Product Details

Immunogen:	Synthetic peptide of Human TRPM3
Isotype:	IgG
Cross-Reactivity:	Human
Purification:	Antigen affinity purification

## Target Details

Target:	TRPM3
Alternative Name:	TRPM3 ( <a href="#">TRPM3 Products</a> )
Background:	Background: The product of this gene belongs to the family of transient receptor potential (TRP) channels. TRP channels are cation-selective channels important for cellular calcium signaling and homeostasis. The protein encoded by this gene mediates calcium entry, and this entry is potentiated by calcium store depletion. Alternatively spliced transcript variants

## Target Details

encoding different isoforms have been identified.

Aliases: transient receptor potential cation channel, subfamily M, member 3

UniProt: [Q9HCF6](#)

## Application Details

Application Notes: ELISA:1:1000-1:2000, IHC:1:10-1:50,

Restrictions: For Research Use only

## Handling

Format: Liquid

Buffer: -20 °C, pH 7.4 PBS, 0.05 % Sodium azide, 40 % Glycerol

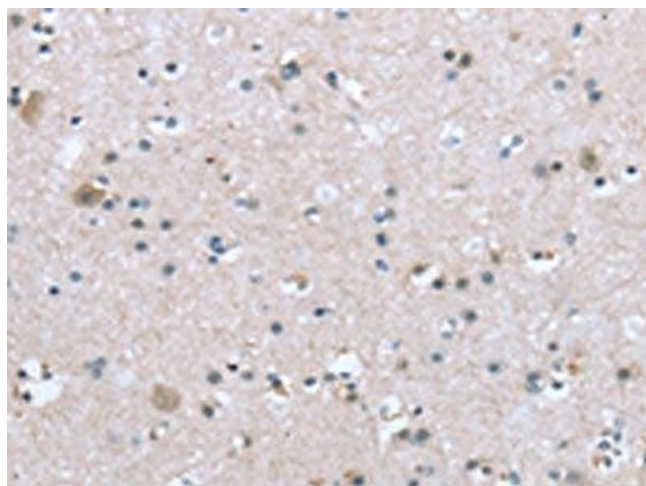
Preservative: Sodium azide

Precaution of Use: This product contains Sodium azide: a POISONOUS AND HAZARDOUS SUBSTANCE which should be handled by trained staff only.

Storage: -20 °C,-80 °C

Storage Comment: Upon receipt, store at -20°C or -80°C. Avoid repeated freeze.

## Images



### Immunohistochemistry

**Image 1.** The image on the left is immunohistochemistry of paraffin-embedded Human brain tissue using ABIN7192921 (TRPM3 Antibody) at dilution 1/20, on the right is treated with synthetic peptide. (Original magnification: x200)