

Datasheet for ABIN7192924 **anti-TRPM6 antibody**



[Go to Product page](#)

1 Image

Overview

Quantity:	100 µL
Target:	TRPM6
Reactivity:	Human
Host:	Rabbit
Clonality:	Polyclonal
Conjugate:	This TRPM6 antibody is un-conjugated
Application:	ELISA, Western Blotting (WB)

Product Details

Immunogen:	Synthetic peptide of Human TRPM6
Isotype:	IgG
Cross-Reactivity:	Human
Purification:	Antigen affinity purification

Target Details

Target:	TRPM6
Alternative Name:	TRPM6 (TRPM6 Products)
Background:	Background: This gene is predominantly expressed in the kidney and colon, and encodes a protein containing an ion channel domain and a protein kinase domain. It is crucial for magnesium homeostasis, and plays an essential role in epithelial magnesium transport and in the active magnesium absorption in the gut and kidney. Mutations in this gene are associated

Target Details

with hypomagnesemia with secondary hypocalcemia. Alternatively spliced transcript variants encoding different isoforms have been noted for this gene.

Aliases: TRPM6 antibody, CHAK2Transient receptor potential cation channel subfamily M member 6 antibody, EC 2.7.11.1 antibody, Channel kinase 2 antibody, Melastatin-related TRP cation channel 6 antibody

UniProt: [Q9BX84](#)

Application Details

Application Notes: ELISA:1:1000-1:2000, WB:1:200-1:1000,

Restrictions: For Research Use only

Handling

Format: Liquid

Buffer: -20 °C, pH 7.4 PBS, 0.05 % Sodium azide, 40 % Glycerol

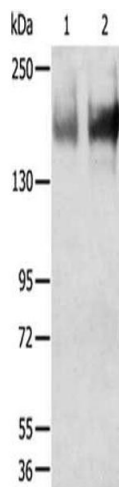
Preservative: Sodium azide

Precaution of Use: This product contains Sodium azide: a POISONOUS AND HAZARDOUS SUBSTANCE which should be handled by trained staff only.

Storage: -20 °C,-80 °C

Storage Comment: Upon receipt, store at -20°C or -80°C. Avoid repeated freeze.

Images



Western Blotting

Image 1. Gel: 6 % SDS-PAGE, Lysate: 40 µg, Lane 1-2: Human jejunioileum tissue, Human ileum tissue, Primary antibody: ABIN7192924(TRPM6 Antibody) at dilution 1/200, Secondary antibody: Goat anti rabbit IgG at 1/8000 dilution, Exposure time: 5 minutes