

Datasheet for ABIN7192934

anti-TRPV5 antibody**2** Images[Go to Product page](#)

Overview

Quantity:	100 µL
Target:	TRPV5
Reactivity:	Human
Host:	Rabbit
Clonality:	Polyclonal
Conjugate:	This TRPV5 antibody is un-conjugated
Application:	ELISA, Immunohistochemistry (IHC)

Product Details

Immunogen:	Synthetic peptide of Human TRPV5
Isotype:	IgG
Cross-Reactivity:	Human
Purification:	Antigen affinity purification

Target Details

Target:	TRPV5
Alternative Name:	TRPV5 (TRPV5 Products)
Background:	<p>Background: This gene is a member of the transient receptor family and the TrpV subfamily. The calcium-selective channel encoded by this gene has 6 transmembrane-spanning domains, multiple potential phosphorylation sites, an N-linked glycosylation site, and 5 ANK repeats. This protein forms homotetramers or heterotetramers and is activated by a low internal calcium</p>

Target Details

level.

Aliases: Calcium transport protein 2 antibody, Calcium transporter 2 antibody, CAT 2 antibody, CAT2 antibody, ECAC 1 antibody, ECaC antibody, ECaC1 antibody, Epithelial calcium channel 1 antibody, Osm 9 like TRP channel 3 antibody, Osm-9-like TRP channel 3 antibody, OTRPC 3 antibody, OTRPC3 antibody, Transient receptor potential cation channel subfamily V member 5 antibody, TRPV 5 antibody, TrpV5 antibody, TRPV5_HUMAN antibody

UniProt: [Q9NQA5](#)

Application Details

Application Notes: ELISA:1:2000-1:5000, IHC:1:25-1:100,

Restrictions: For Research Use only

Handling

Format: Liquid

Buffer: -20 °C, pH 7.4 PBS, 0.05 % Sodium azide, 40 % Glycerol

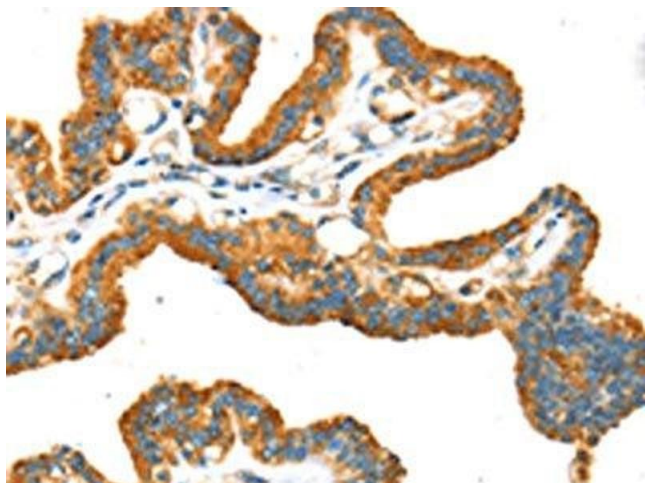
Preservative: Sodium azide

Precaution of Use: This product contains Sodium azide: a POISONOUS AND HAZARDOUS SUBSTANCE which should be handled by trained staff only.

Storage: -20 °C, -80 °C

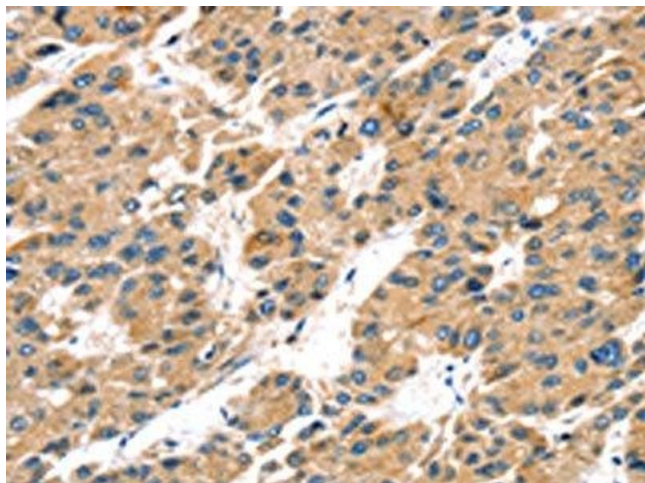
Storage Comment: Upon receipt, store at -20°C or -80°C. Avoid repeated freeze.

Images



Immunohistochemistry

Image 1. The image on the left is immunohistochemistry of paraffin-embedded Human thyroid cancer tissue using ABIN7192934 (TRPV5 Antibody) at dilution 1/25, on the right is treated with synthetic peptide. (Original magnification: x200)



Immunohistochemistry

Image 2. The image on the left is immunohistochemistry of paraffin-embedded Human liver cancer tissue using ABIN7192934 (TRPV5 Antibody) at dilution 1/25, on the right is treated with synthetic peptide. (Original magnification: x200)