



Datasheet for ABIN7192952 anti-TTF2 antibody



[Go to Product page](#)

1 Image

Overview

Quantity:	100 µL
Target:	TTF2
Reactivity:	Human
Host:	Rabbit
Clonality:	Polyclonal
Conjugate:	This TTF2 antibody is un-conjugated
Application:	ELISA, Immunohistochemistry (IHC)

Product Details

Immunogen:	Synthetic peptide of Human TTF2
Isotype:	IgG
Cross-Reactivity:	Human
Purification:	Antigen affinity purification

Target Details

Target:	TTF2
Alternative Name:	TTF2 (TTF2 Products)

Background: Background: This gene encodes a member of the SWI2/SNF2 family of proteins, which play a critical role in altering protein-DNA interactions. The encoded protein has been shown to have dsDNA-dependent ATPase activity and RNA polymerase II termination activity. This protein interacts with cell division cycle 5-like, associates with human splicing complexes, and plays a

Target Details

role in pre-mRNA splicing.

Aliases: F2 antibody, Factor 2 antibody, Factor2 antibody, HuF 2 antibody, HuF2 antibody, Human factor 2 antibody, Lodestar homolog antibody, Lodestar protein antibody, RNA polymerase II termination factor antibody, Transcription release factor 2 antibody, Transcription termination factor 2 antibody, Transcription termination factor RNA polymerase II antibody, TTF2 antibody, TTF2_HUMAN antibody

UniProt: [Q9UNY4](#)

Pathways: [Thyroid Hormone Synthesis](#)

Application Details

Application Notes: ELISA:1:1000-1:2000, IHC:1:5-1:20,

Restrictions: For Research Use only

Handling

Format: Liquid

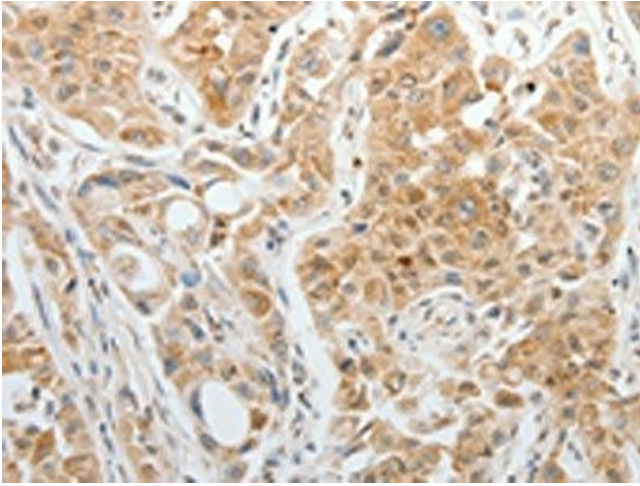
Buffer: -20 °C, pH 7.4 PBS, 0.05 % Sodium azide, 40 % Glycerol

Preservative: Sodium azide

Precaution of Use: This product contains Sodium azide: a POISONOUS AND HAZARDOUS SUBSTANCE which should be handled by trained staff only.

Storage: -20 °C,-80 °C

Storage Comment: Upon receipt, store at -20°C or -80°C. Avoid repeated freeze.



Immunohistochemistry

Image 1. The image on the left is immunohistochemistry of paraffin-embedded Human lung cancer tissue using ABIN7192952(TTF2 Antibody) at dilution 1/5, on the right is treated with synthetic peptide. (Original magnification: x200)