



[Go to Product page](#)

Datasheet for ABIN7192957

## anti-TUSC1 antibody

### 2 Images

#### Overview

Quantity:	100 µL
Target:	TUSC1
Reactivity:	Human
Host:	Rabbit
Clonality:	Polyclonal
Conjugate:	This TUSC1 antibody is un-conjugated
Application:	ELISA, Immunohistochemistry (IHC)

#### Product Details

Immunogen:	Synthetic peptide of Human TUSC1
Isotype:	IgG
Cross-Reactivity:	Human
Purification:	Antigen affinity purification

#### Target Details

Target:	TUSC1
Alternative Name:	TUSC1 ( <a href="#">TUSC1 Products</a> )
Background:	Background: This gene is located within the region of chromosome 9p that harbors tumor suppressor genes critical in carcinogenesis. It is an intronless gene which is downregulated in non-small-cell lung cancer and small-cell lung cancer cell lines, suggesting that it may play a role in lung tumorigenesis.

## Target Details

Aliases: tumor suppressor candidate 1

UniProt: [Q2TAM9](#)

## Application Details

Application Notes: ELISA:1:2000-1:5000, IHC:1:25-1:100,

Restrictions: For Research Use only

## Handling

Format: Liquid

Buffer: -20 °C, pH 7.4 PBS, 0.05 % Sodium azide, 40 % Glycerol

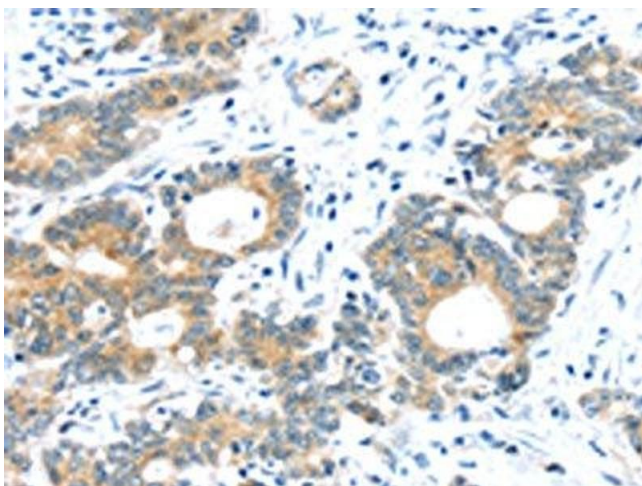
Preservative: Sodium azide

Precaution of Use: This product contains Sodium azide: a POISONOUS AND HAZARDOUS SUBSTANCE which should be handled by trained staff only.

Storage: -20 °C,-80 °C

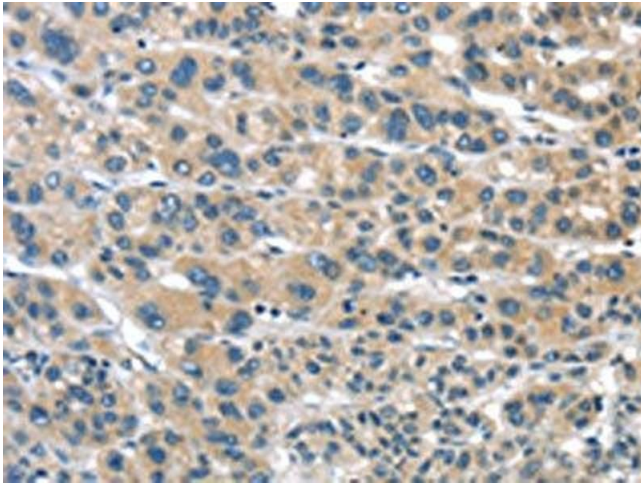
Storage Comment: Upon receipt, store at -20°C or -80°C. Avoid repeated freeze.

## Images



### Immunohistochemistry

**Image 1.** The image on the left is immunohistochemistry of paraffin-embedded Human colorectal cancer tissue using ABIN7192957(TUSC1 Antibody) at dilution 1/30, on the right is treated with synthetic peptide. (Original magnification: x200)



### Immunohistochemistry

**Image 2.** The image on the left is immunohistochemistry of paraffin-embedded Human liver cancer tissue using ABIN7192957(TUSC1 Antibody) at dilution 1/30, on the right is treated with synthetic peptide. (Original magnification: x200)