



[Go to Product page](#)

Datasheet for ABIN7192958

anti-TUSC1 antibody

2 Images

Overview

Quantity:	100 µL
Target:	TUSC1
Reactivity:	Human
Host:	Rabbit
Clonality:	Polyclonal
Conjugate:	This TUSC1 antibody is un-conjugated
Application:	Western Blotting (WB), ELISA, Immunohistochemistry (IHC)

Product Details

Immunogen:	Synthetic peptide of Human TUSC1
Isotype:	IgG
Cross-Reactivity:	Human
Purification:	Antigen affinity purification

Target Details

Target:	TUSC1
Alternative Name:	TUSC1 (TUSC1 Products)
Background:	Background: This gene is located within the region of chromosome 9p that harbors tumor suppressor genes critical in carcinogenesis. It is an intronless gene which is downregulated in non-small-cell lung cancer and small-cell lung cancer cell lines, suggesting that it may play a role in lung tumorigenesis.

Target Details

Aliases: MGC131751 antibody, TSG 9 antibody, TSG-9 antibody, TSG9 antibody, Tumor suppressor candidate 1 antibody, Tumor suppressor candidate gene 1 protein antibody, Tusc1 antibody, TUSC1_HUMAN antibody

UniProt: [Q2TAM9](#)

Application Details

Application Notes: ELISA:1:1000-1:2000, WB:1:200-1:1000, IHC:1:30-1:150,

Restrictions: For Research Use only

Handling

Format: Liquid

Buffer: -20 °C, pH 7.4 PBS, 0.05 % Sodium azide, 40 % Glycerol

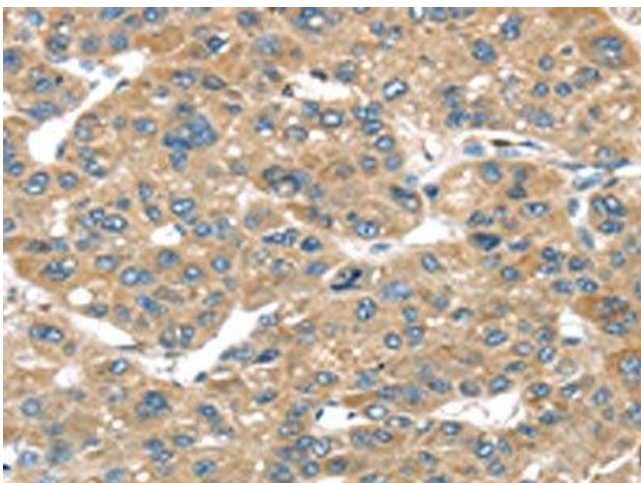
Preservative: Sodium azide

Precaution of Use: This product contains Sodium azide: a POISONOUS AND HAZARDOUS SUBSTANCE which should be handled by trained staff only.

Storage: -20 °C,-80 °C

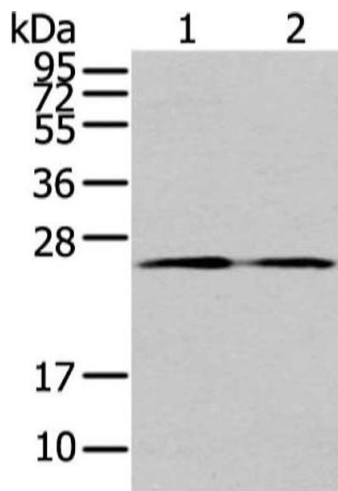
Storage Comment: Upon receipt, store at -20°C or -80°C. Avoid repeated freeze.

Images



Immunohistochemistry

Image 1. The image on the left is immunohistochemistry of paraffin-embedded Human liver cancer tissue using ABIN7192958(TUSC1 Antibody) at dilution 1/45, on the right is treated with synthetic peptide. (Original magnification: x200)



Western Blotting

Image 2. Gel: 12 % SDS-PAGE, Lysate: 40 µg, Lane 1-2: PC3 cell and human colon cancer tissue, Primary antibody: ABIN7192958(TUSC1 Antibody) at dilution 1/200 dilution, Secondary antibody: Goat anti rabbit IgG at 1/8000 dilution, Exposure time: 1 minute