



[Go to Product page](#)

Datasheet for ABIN7192977

## anti-UBTD1 antibody

### 3 Images

#### Overview

Quantity:	100 µL
Target:	UBTD1
Reactivity:	Human
Host:	Rabbit
Clonality:	Polyclonal
Conjugate:	This UBTD1 antibody is un-conjugated
Application:	ELISA, Western Blotting (WB), Immunohistochemistry (IHC)

#### Product Details

Immunogen:	Synthetic peptide of Human UBTD1
Isotype:	IgG
Cross-Reactivity:	Human, Mouse, Rat
Purification:	Antigen affinity purification

#### Target Details

Target:	UBTD1
Alternative Name:	UBTD1 ( <a href="#">UBTD1 Products</a> )
Background:	Background: The degradation of many proteins is carried out by the ubiquitin pathway in which proteins are targeted for degradation by covalent conjugation of the polypeptide ubiquitin. This gene encodes a protein that belongs to the ubiquitin family of proteins. The encoded protein is thought to regulate E2 ubiquitin conjugating enzymes belonging to the UBE2D family.

## Target Details

Aliases: UBTD1Ubiquitin domain-containing protein 1 antibody

UniProt: [Q9HAC8](#)

## Application Details

Application Notes: ELISA:1:1000-1:2000, WB:1:200-1:1000, IHC:1:25-1:100,

Restrictions: For Research Use only

## Handling

Format: Liquid

Buffer: -20 °C, pH 7.4 PBS, 0.05 % Sodium azide, 40 % Glycerol

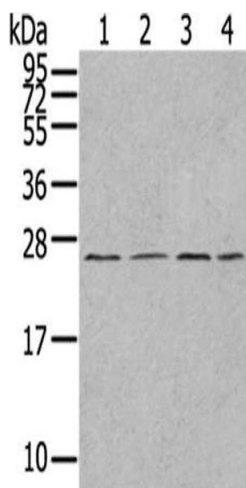
Preservative: Sodium azide

Precaution of Use: This product contains Sodium azide: a POISONOUS AND HAZARDOUS SUBSTANCE which should be handled by trained staff only.

Storage: -20 °C,-80 °C

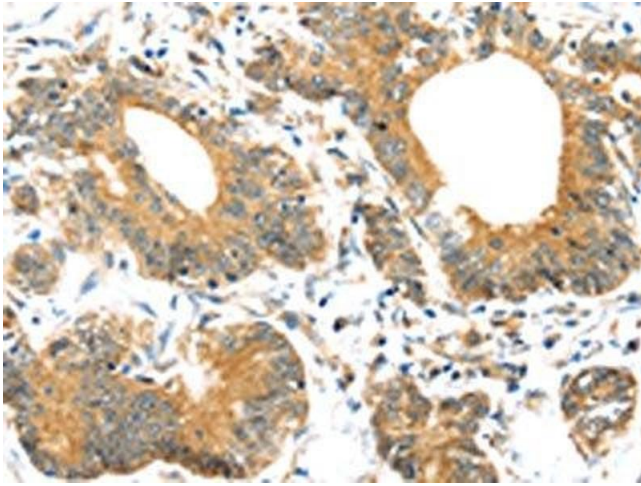
Storage Comment: Upon receipt, store at -20°C or -80°C. Avoid repeated freeze.

## Images



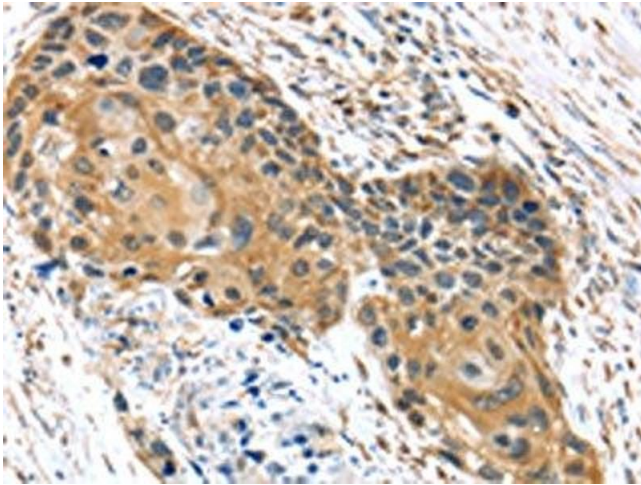
### Western Blotting

**Image 1.** Gel: 12 % SDS-PAGE,Lysate: 40 µg,Lane 1-4: A549 cells, Jurkat cells, A375 cells, HepG2 cells,Primary antibody: ABIN7192977(UBTD1 Antibody) at dilution 1/300 dilution,Secondary antibody: Goat anti rabbit IgG at 1/8000 dilution,Exposure time: 1 minute



#### Immunohistochemistry

**Image 2.** The image on the left is immunohistochemistry of paraffin-embedded Human colorectal cancer tissue using ABIN7192977(UBTD1 Antibody) at dilution 1/30, on the right is treated with synthetic peptide. (Original magnification: x200)



#### Immunohistochemistry

**Image 3.** The image on the left is immunohistochemistry of paraffin-embedded Human esophagus cancer tissue using ABIN7192977(UBTD1 Antibody) at dilution 1/30, on the right is treated with synthetic peptide. (Original magnification: x200)