



[Go to Product page](#)

Datasheet for ABIN7193036

anti-VWCE antibody

2 Images

Overview

Quantity:	100 µL
Target:	VWCE
Reactivity:	Human
Host:	Rabbit
Clonality:	Polyclonal
Application:	ELISA, Immunohistochemistry (IHC)

Product Details

Immunogen:	Synthetic peptide of Human VWCE
Isotype:	IgG
Cross-Reactivity:	Human
Purification:	Antigen affinity purification

Target Details

Target:	VWCE
Alternative Name:	VWCE (VWCE Products)
Background:	Background: May be a regulatory element in the beta-catenin signaling pathway and a target for chemoprevention of hepatocellular carcinoma. Aliases: von Willebrand factor C and EGF domains
UniProt:	Q96DN2

Application Details

Application Notes: ELISA:1:2000-1:5000, IHC:1:25-1:100,

Restrictions: For Research Use only

Handling

Format: Liquid

Buffer: -20 °C, pH 7.4 PBS, 0.05 % Sodium azide, 40 % Glycerol

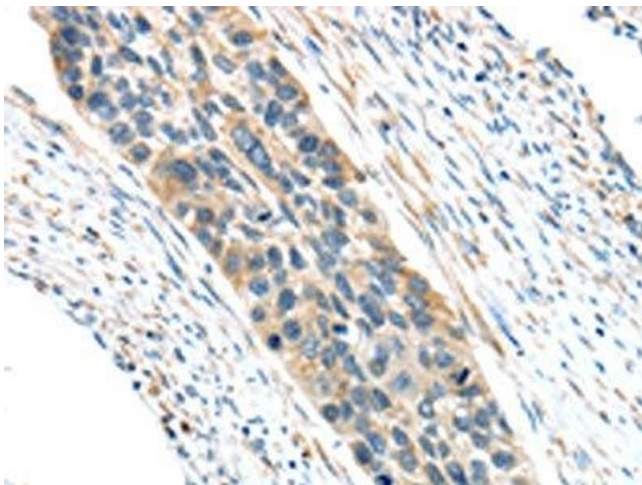
Preservative: Sodium azide

Precaution of Use: This product contains Sodium azide: a POISONOUS AND HAZARDOUS SUBSTANCE which should be handled by trained staff only.

Storage: -20 °C,-80 °C

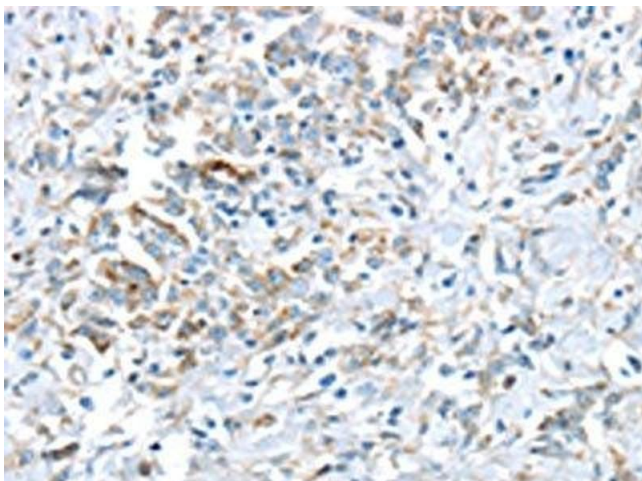
Storage Comment: Upon receipt, store at -20°C or -80°C. Avoid repeated freeze.

Images



Immunohistochemistry

Image 1. The image on the left is immunohistochemistry of paraffin-embedded Human esophagus cancer tissue using ABIN7193036(VWCE Antibody) at dilution 1/30, on the right is treated with synthetic peptide. (Original magnification: x200)



Immunohistochemistry

Image 2. The image on the left is immunohistochemistry of paraffin-embedded Human gastric cancer tissue using ABIN7193036(VWCE Antibody) at dilution 1/30, on the right is treated with synthetic peptide. (Original magnification: x200)