



Datasheet for ABIN7193045
anti-WFDC1 antibody



[Go to Product page](#)

1 Image

Overview

Quantity:	100 µL
Target:	WFDC1
Reactivity:	Human
Host:	Rabbit
Clonality:	Polyclonal
Conjugate:	This WFDC1 antibody is un-conjugated
Application:	ELISA, Immunohistochemistry (IHC)

Product Details

Immunogen:	Synthetic peptide of Human WFDC1
Isotype:	IgG
Cross-Reactivity:	Human, Mouse
Purification:	Antigen affinity purification

Target Details

Target:	WFDC1
Alternative Name:	WFDC1 (WFDC1 Products)
Background:	Background: This gene encodes a member of the WAP-type four disulfide core domain family. The WAP-type four-disulfide core domain contains eight cysteines forming four disulfide bonds at the core of the protein, and functions as a protease inhibitor in many family members. This gene is mapped to chromosome 16q24, an area of frequent loss of heterozygosity in cancers,

Target Details

including prostate, breast and hepatocellular cancers and Wilms' tumor. This gene is downregulated in many cancer types and may be involved in the inhibition of cell proliferation. The encoded protein may also play a role in the susceptibility of certain CD4 memory T cells to human immunodeficiency virus infection. Alternative splicing results in multiple transcript variants.

Aliases: Prostate stromal protein ps20 antibody, PS20 antibody, ps20 growth inhibitor antibody, WAP four disulfide core domain 1 antibody, WAP four disulfide core domain 1 homolog antibody, WAP four-disulfide core domain protein 1 antibody, Wfdc1 antibody, WFDC1_HUMAN antibody

UniProt: [Q9HC57](#)

Application Details

Application Notes: ELISA:1:2000-1:5000, IHC:1:25-1:100,

Restrictions: For Research Use only

Handling

Format: Liquid

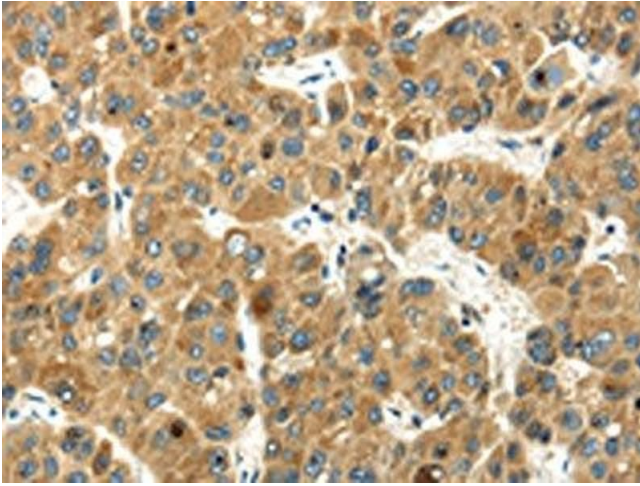
Buffer: -20 °C, pH 7.4 PBS, 0.05 % Sodium azide, 40 % Glycerol

Preservative: Sodium azide

Precaution of Use: This product contains Sodium azide: a POISONOUS AND HAZARDOUS SUBSTANCE which should be handled by trained staff only.

Storage: -20 °C,-80 °C

Storage Comment: Upon receipt, store at -20°C or -80°C. Avoid repeated freeze.



Immunohistochemistry

Image 1. The image on the left is immunohistochemistry of paraffin-embedded Human liver cancer tissue using ABIN7193045(WFDC1 Antibody) at dilution 1/35, on the right is treated with synthetic peptide. (Original magnification: x200)