

Datasheet for ABIN7193053

anti-WNK3 antibody[Go to Product page](#)**2** Images

Overview

Quantity:	100 µL
Target:	WNK3
Reactivity:	Human
Host:	Rabbit
Clonality:	Polyclonal
Application:	Immunohistochemistry (IHC), Western Blotting (WB), ELISA

Product Details

Immunogen:	Synthetic peptide of Human WNK3
Isotype:	IgG
Cross-Reactivity:	Human, Mouse
Purification:	Antigen affinity purification

Target Details

Target:	WNK3
Alternative Name:	WNK3 (WNK3 Products)
Background:	Background: This gene encodes a protein belonging to the 'with no lysine' family of serine-threonine protein kinases. These family members lack the catalytic lysine in subdomain II, and instead have a conserved lysine in subdomain I. This family member functions as a positive regulator of the transcellular Ca ²⁺ transport pathway, and it plays a role in the increase of cell survival in a caspase-3-dependent pathway. Alternative splicing results in multiple transcript

Target Details

variants.

Aliases: KIAA1566 antibody, PRKWNK 3 antibody, PRKWNK3 antibody, Protein kinase lysine deficient 3 antibody, Protein kinase lysine-deficient 3 antibody, Protein kinase with no lysine 3 antibody, Serine/threonine protein kinase WNK3 antibody, Serine/threonine-protein kinase WNK3 antibody, WNK 3 antibody, WNK lysine deficient protein kinase 3 antibody, Wnk3 antibody, WNK3_HUMAN antibody

UniProt: [Q9BYP7](#)

Application Details

Application Notes: ELISA:1:1000-1:2000, WB:1:200-1:1000, IHC:1:25-1:100,

Restrictions: For Research Use only

Handling

Format: Liquid

Buffer: -20 °C, pH 7.4 PBS, 0.05 % Sodium azide, 40 % Glycerol

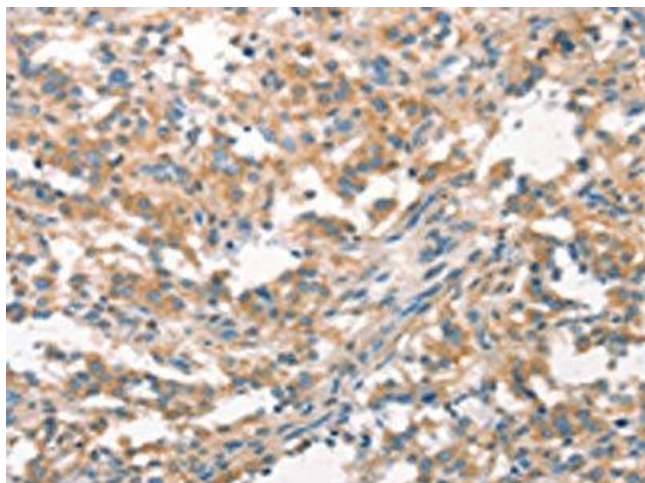
Preservative: Sodium azide

Precaution of Use: This product contains Sodium azide: a POISONOUS AND HAZARDOUS SUBSTANCE which should be handled by trained staff only.

Storage: -20 °C,-80 °C

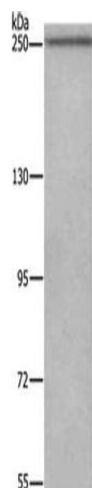
Storage Comment: Upon receipt, store at -20°C or -80°C. Avoid repeated freeze.

Images



Immunohistochemistry

Image 1. The image on the left is immunohistochemistry of paraffin-embedded Human thyroid cancer tissue using ABIN7193053(WNK3 Antibody) at dilution 1/20, on the right is treated with synthetic peptide. (Original magnification: x200)



Western Blotting

Image 2. Gel: 6 % SDS-PAGE, Lysate: 40 µg, Lane: Hela cells, Primary antibody: ABIN7193053(WNK3 Antibody) at dilution 1/300, Secondary antibody: Goat anti rabbit IgG at 1/8000 dilution, Exposure time: 10 minutes