



Datasheet for ABIN719306  
**anti-GORAB antibody (AA 201-300)**



[Go to Product page](#)

1 Image

Overview

Quantity:	100 µL
Target:	GORAB
Binding Specificity:	AA 201-300
Reactivity:	Human
Host:	Rabbit
Clonality:	Polyclonal
Conjugate:	This GORAB antibody is un-conjugated
Application:	Western Blotting (WB), ELISA, Immunofluorescence (Cultured Cells) (IF (cc)), Immunofluorescence (Paraffin-embedded Sections) (IF (p)), Immunohistochemistry (Paraffin-embedded Sections) (IHC (p)), Immunohistochemistry (Frozen Sections) (IHC (fro))

Product Details

Immunogen:	KLH conjugated synthetic peptide derived from human SCYL1BP1
Isotype:	IgG
Cross-Reactivity:	Human
Predicted Reactivity:	Mouse,Rat,Dog,Cow,Pig,Horse,Chicken,Rabbit
Purification:	Purified by Protein A.

Target Details

Target:	GORAB
---------	-------

## Target Details

---

Alternative Name: SCYL1BP1 ([GORAB Products](#))

---

Background: Synonyms: GO, NTKLBP1, SCYL1BP1, RAB6-interacting golgin, N-terminal kinase-like-binding protein 1, NTKL-BP1, NTKL-binding protein 1, hNTKL-BP1, SCY1-like 1-binding protein 1, SCYL1-BP1, SCYL1-binding protein 1, GORAB

Background: Defects in GORAB are the cause of geroderma osteodysplasticum (GO) [MIM:231070], also known as geroderma osteodysplastica or Walt Disney dwarfism. GO is a rare autosomal recessive disorder characterized by lax, wrinkled skin, joint laxity and a typical face with a prematurely aged appearance. Skeletal signs include severe osteoporosis leading to frequent fractures, malar and mandibular hypoplasia and a variable degree of growth retardation.

---

Gene ID: 92344

---

UniProt: [Q5T7V8](#)

---

## Application Details

---

Application Notes: WB 1:300-5000  
ELISA 1:500-1000  
IHC-P 1:200-400  
IHC-F 1:100-500  
IF(IHC-P) 1:50-200  
IF(IHC-F) 1:50-200  
IF(ICC) 1:50-200

---

Restrictions: For Research Use only

---

## Handling

---

Format: Liquid

---

Concentration: 1 µg/µL

---

Buffer: 0.01M TBS( pH 7.4) with 1 % BSA, 0.02 % Proclin300 and 50 % Glycerol.

---

Preservative: ProClin

---

Precaution of Use: This product contains ProClin: a POISONOUS AND HAZARDOUS SUBSTANCE, which should be handled by trained staff only.

---

Storage: 4 °C,-20 °C

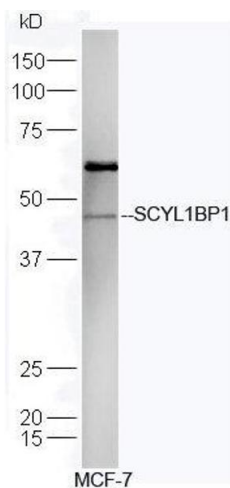
---

## Handling

Storage Comment: Shipped at 4°C. Store at -20°C for one year. Avoid repeated freeze/thaw cycles.

Expiry Date: 12 months

## Images



### Western Blotting

**Image 1.** Human MCF-7 lysates probed with Rabbit Anti-SCYL1BP1 Polyclonal Antibody, Unconjugated (ABIN719306) at 1:300 overnight at 4°C. Followed by a conjugated secondary antibody at 1:5000 for 90 min at 37°C.