

Datasheet for ABIN7193065

anti-WNT2B antibody[Go to Product page](#)**1** Image

Overview

Quantity:	100 µL
Target:	WNT2B
Reactivity:	Human
Host:	Rabbit
Clonality:	Polyclonal
Conjugate:	This WNT2B antibody is un-conjugated
Application:	Immunohistochemistry (IHC), ELISA

Product Details

Immunogen:	Synthetic peptide of Human WNT2B
Isotype:	IgG
Cross-Reactivity:	Human, Mouse
Purification:	Antigen affinity purification

Target Details

Target:	WNT2B
Alternative Name:	WNT2B (WNT2B Products)
Background:	Background: This gene encodes a member of the wingless-type MMTV integration site (WNT) family of highly conserved, secreted signaling factors. WNT family members function in a variety of developmental processes including regulation of cell growth and differentiation and are characterized by a WNT-core domain. This gene may play a role in human development as

Target Details

well as carcinogenesis. Alternative splicing results in multiple transcript variants.
Aliases: wingless-type MMTV integration site family, member 2B

UniProt: [Q93097](#)

Pathways: [WNT Signaling](#)

Application Details

Application Notes: ELISA:1:1000-1:2000, IHC:1:10-1:50,

Restrictions: For Research Use only

Handling

Format: Liquid

Buffer: -20 °C, pH 7.4 PBS, 0.05 % Sodium azide, 40 % Glycerol

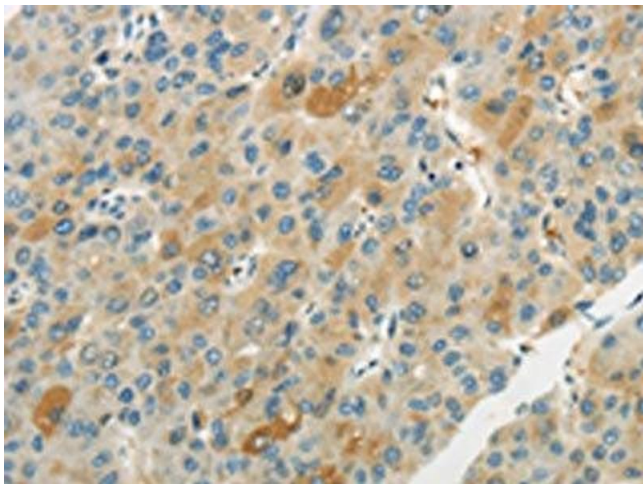
Preservative: Sodium azide

Precaution of Use: This product contains Sodium azide: a POISONOUS AND HAZARDOUS SUBSTANCE which should be handled by trained staff only.

Storage: -20 °C,-80 °C

Storage Comment: Upon receipt, store at -20°C or -80°C. Avoid repeated freeze.

Images



Immunohistochemistry

Image 1. The image on the left is immunohistochemistry of paraffin-embedded Human liver cancer tissue using ABIN7193065(WNT2B Antibody) at dilution 1/20, on the right is treated with synthetic peptide. (Original magnification: x200)