

Datasheet for ABIN7193079

**anti-XKRX antibody****3** Images[Go to Product page](#)

## Overview

Quantity:	100 µL
Target:	XKRX
Reactivity:	Human
Host:	Rabbit
Clonality:	Polyclonal
Conjugate:	This XKRX antibody is un-conjugated
Application:	Western Blotting (WB), ELISA, Immunohistochemistry (IHC)

## Product Details

Immunogen:	Synthetic peptide of Human XKRX
Isotype:	IgG
Cross-Reactivity:	Human
Purification:	Antigen affinity purification

## Target Details

Target:	XKRX
Alternative Name:	XKRX ( <a href="#">XKRX Products</a> )
Background:	<p>Background: This gene encodes a protein that is related to a component of the XK/Kell complex of the Kell blood group system. The encoded protein includes several transmembrane domains, is known to be exposed to the cell surface, and may function as a membrane transporter.</p> <p>Aliases: XKRX antibody, XKR2 antibody, XPLAC antibody, XRG2 antibody, XK-related protein 2</p>

## Target Details

antibody, Membrane protein XPLAC antibody, X Kell blood group-related antibody, X-linked antibody

UniProt: [Q6PP77](#)

## Application Details

Application Notes: ELISA:1:2000-1:5000, WB:1:500-1:2000, IHC:1:25-1:100,

Restrictions: For Research Use only

## Handling

Format: Liquid

Buffer: -20 °C, pH 7.4 PBS, 0.05 % Sodium azide, 40 % Glycerol

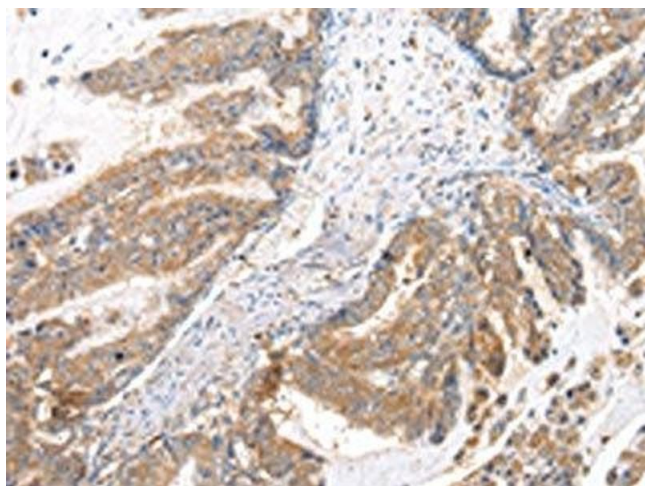
Preservative: Sodium azide

Precaution of Use: This product contains Sodium azide: a POISONOUS AND HAZARDOUS SUBSTANCE which should be handled by trained staff only.

Storage: -20 °C,-80 °C

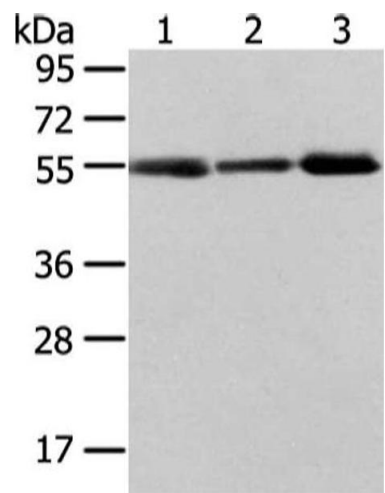
Storage Comment: Upon receipt, store at -20°C or -80°C. Avoid repeated freeze.

## Images



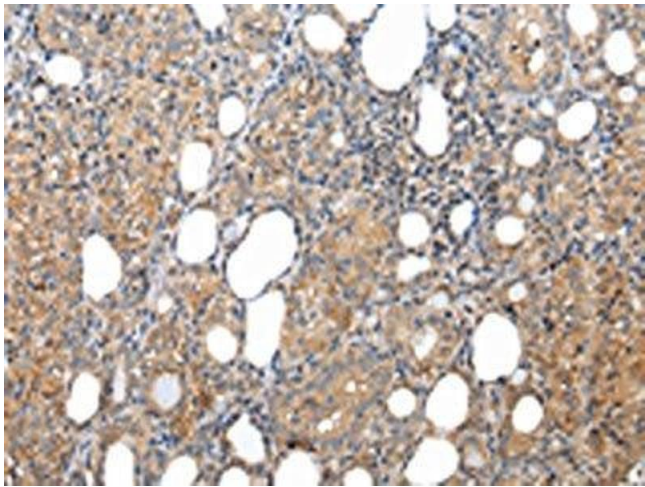
### Immunohistochemistry

**Image 1.** The image on the left is immunohistochemistry of paraffin-embedded Human esophagus cancer tissue using ABIN7193079(XKRX Antibody) at dilution 1/25, on the right is treated with synthetic peptide. (Original magnification: x200)



#### Western Blotting

**Image 2.** Gel: 8 % SDS-PAGE, Lysate: 40 µg, Lane 1-3: Human normal stomach tissue, human liver cancer and thyroid cancer tissue, Primary antibody: ABIN7193079(XKRX Antibody) at dilution 1/400 dilution, Secondary antibody: Goat anti rabbit IgG at 1/8000 dilution, Exposure time: 2 minutes



#### Immunohistochemistry

**Image 3.** The image on the left is immunohistochemistry of paraffin-embedded Human thyroid cancer tissue using ABIN7193079(XKRX Antibody) at dilution 1/25, on the right is treated with synthetic peptide. (Original magnification: x200)