

Datasheet for ABIN7193097

anti-Zinc Finger Protein 3 Homolog (ZFP3) antibody[Go to Product page](#)**1** Image

Overview

Quantity:	100 µL
Target:	Zinc Finger Protein 3 Homolog (ZFP3)
Reactivity:	Human
Host:	Rabbit
Clonality:	Polyclonal
Conjugate:	Un-conjugated
Application:	ELISA, Immunohistochemistry (IHC)

Product Details

Immunogen:	Synthetic peptide of Human ZFP30
Isotype:	IgG
Cross-Reactivity:	Human
Purification:	Antigen affinity purification

Target Details

Target:	Zinc Finger Protein 3 Homolog (ZFP3)
Alternative Name:	ZFP3 (ZFP3 Products)
Background:	<p>Background: ZFP30 (zinc finger protein 30 homolog) is a 519 amino acid protein that localizes to the nucleus and is composed of thirteen C2H2-type zinc fingers and one KRAB domain.</p> <p>ZFP30 is encoded by a gene located on human chromosome 19, which consists of over 63 million bases, houses approximately 1,400 genes and is recognized for having the greatest</p>

Target Details

gene density of the human chromosomes. It is the genetic home for a number of immunoglobulin (Ig) superfamily members, including the killer cell and leukocyte Ig-like receptors, a number of ICAMs, the CEACAM and PSG families, and Fc receptors (FcRs).
Aliases: KIAA0961 antibody, ZFP 30 antibody, Zfp-30 antibody, ZFP30 antibody, ZFP30_HUMAN antibody, Zinc finger protein 30 homolog antibody, Zinc finger protein 745 antibody, ZNF745 antibody

UniProt: [Q9Y2G7](#)

Application Details

Application Notes: ELISA:1:2000-1:5000, IHC:1:25-1:100,

Restrictions: For Research Use only

Handling

Format: Liquid

Buffer: -20 °C, pH 7.4 PBS, 0.05 % Sodium azide, 40 % Glycerol

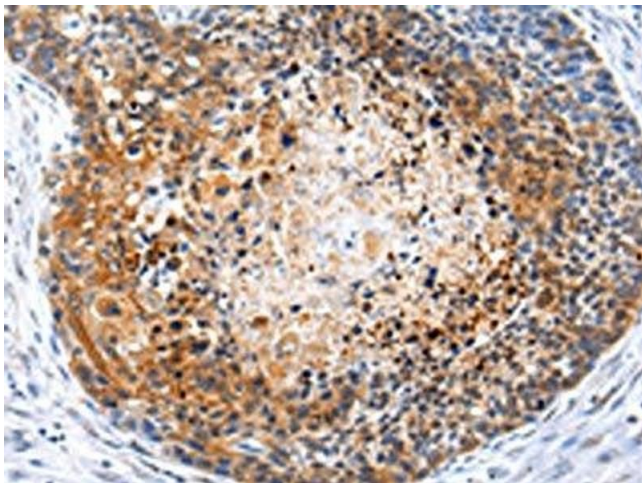
Preservative: Sodium azide

Precaution of Use: This product contains Sodium azide: a POISONOUS AND HAZARDOUS SUBSTANCE which should be handled by trained staff only.

Storage: -20 °C,-80 °C

Storage Comment: Upon receipt, store at -20°C or -80°C. Avoid repeated freeze.

Images



Immunohistochemistry

Image 1. The image on the left is immunohistochemistry of paraffin-embedded Human esophagus cancer tissue using ABIN7193097(ZFP30 Antibody) at dilution 1/25, on the right is treated with synthetic peptide. (Original magnification: x200)