

Datasheet for ABIN7193106

**anti-ZNF146 antibody****1** Image[Go to Product page](#)

## Overview

Quantity:	100 µL
Target:	ZNF146
Reactivity:	Human
Host:	Rabbit
Clonality:	Polyclonal
Conjugate:	This ZNF146 antibody is un-conjugated
Application:	ELISA, Immunohistochemistry (IHC)

## Product Details

Immunogen:	Synthetic peptide of Human ZNF146
Isotype:	IgG
Cross-Reactivity:	Human, Mouse
Purification:	Antigen affinity purification

## Target Details

Target:	ZNF146
Alternative Name:	ZNF146 ( <a href="#">ZNF146 Products</a> )
Background:	Background: ZNF146 (zinc finger protein 146), also known as OZF (only zinc finger protein), is a 292 amino acid nuclear protein that binds DNA and belongs to the Krüppel C2H2-type zinc-finger protein family. ZNF146 interacts with UBC9 (ubiquitin carrier protein 9) and RAP1 (repressor/activator protein 1 homolog), and is highly expressed in multiple pancreatic and

## Target Details

colorectal cancers. Lower levels of expression have been observed in kidney, lung, placenta and brain.

Aliases: zinc finger protein 146

UniProt: [Q15072](#)

## Application Details

Application Notes: ELISA:1:2000-1:5000, IHC:1:25-1:100,

Restrictions: For Research Use only

## Handling

Format: Liquid

Buffer: -20 °C, pH 7.4 PBS, 0.05 % Sodium azide, 40 % Glycerol

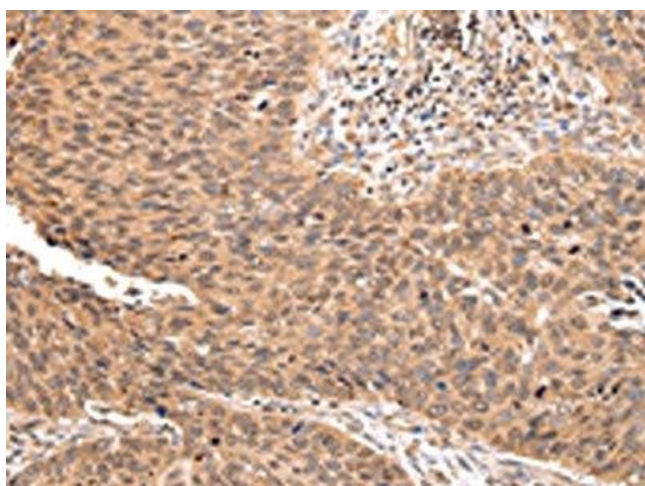
Preservative: Sodium azide

Precaution of Use: This product contains Sodium azide: a POISONOUS AND HAZARDOUS SUBSTANCE which should be handled by trained staff only.

Storage: -20 °C,-80 °C

Storage Comment: Upon receipt, store at -20°C or -80°C. Avoid repeated freeze.

## Images



### Immunohistochemistry

**Image 1.** The image on the left is immunohistochemistry of paraffin-embedded Human lung cancer tissue using ABIN7193106(ZNF146 Antibody) at dilution 1/20, on the right is treated with synthetic peptide. (Original magnification: x200)