

Datasheet for ABIN7193124

anti-GJC3 antibody**2** Images[Go to Product page](#)

Overview

Quantity:	100 µL
Target:	GJC3 (GJc3)
Reactivity:	Mouse
Host:	Rabbit
Clonality:	Polyclonal
Conjugate:	This GJC3 antibody is un-conjugated
Application:	ELISA, Immunohistochemistry (IHC)

Product Details

Immunogen:	Synthetic peptide of Mouse Gjc3
Isotype:	IgG
Cross-Reactivity:	Human, Mouse
Purification:	Antigen affinity purification

Target Details

Target:	GJC3 (GJc3)
Alternative Name:	Gjc3 (GJc3 Products)
Background:	Background: Gap junction gamma-3, also known as connexin-30.2 (Cx30.2) or connexin-31.3 (Cx31.3) or gap junction epsilon-1 (GJE1), is a protein that in humans is encoded by the GJC3 gene. GJC3 is a connexin. This gene encodes a gap junction protein. The encoded protein, also known as a connexin, plays a role in formation of gap junctions, which provide direct

Target Details

connections between neighboring cells. Mutations in this gene have been reported to be associated with nonsyndromic hearing loss.

Aliases: Gjc3 antibody, Cx29 antibody, Gje1Gap junction gamma-3 protein antibody, Connexin-29 antibody, Cx29 antibody, Gap junction epsilon-1 protein antibody

UniProt: [Q921C1](#)

Pathways: [Sensory Perception of Sound](#)

Application Details

Application Notes: ELISA:1:1000-1:2000, IHC:1:10-1:50,

Restrictions: For Research Use only

Handling

Format: Liquid

Buffer: -20 °C, pH 7.4 PBS, 0.05 % Sodium azide, 40 % Glycerol

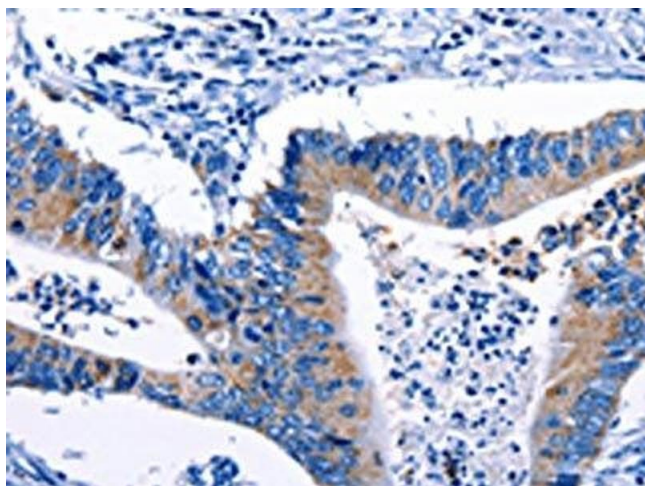
Preservative: Sodium azide

Precaution of Use: This product contains Sodium azide: a POISONOUS AND HAZARDOUS SUBSTANCE which should be handled by trained staff only.

Storage: -20 °C,-80 °C

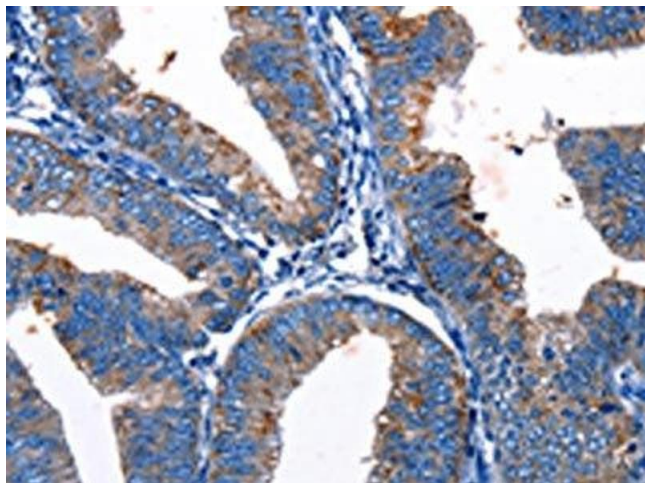
Storage Comment: Upon receipt, store at -20°C or -80°C. Avoid repeated freeze.

Images



Immunohistochemistry

Image 1. The image on the left is immunohistochemistry of paraffin-embedded Human colon cancer tissue using ABIN7193124(Gjc3 Antibody) at dilution 1/10, on the right is treated with synthetic peptide. (Original magnification: x200)



Immunohistochemistry

Image 2. The image on the left is immunohistochemistry of paraffin-embedded Human cervical cancer tissue using ABIN7193124(Gjc3 Antibody) at dilution 1/10, on the right is treated with synthetic peptide. (Original magnification: x200)