

Datasheet for ABIN7193143  
**anti-TGFBR1 antibody (pSer165)**[Go to Product page](#)

## 4 Images

## Overview

Quantity:	100 µg
Target:	TGFBR1
Binding Specificity:	pSer165
Reactivity:	Human
Host:	Rabbit
Clonality:	Polyclonal
Conjugate:	This TGFBR1 antibody is un-conjugated
Application:	Western Blotting (WB), ELISA, Immunohistochemistry (IHC)

## Product Details

Immunogen:	The antiserum was produced against synthesized peptide derived from human TGF beta Receptor I around the phosphorylation site of Ser165. AA range:131-180
Isotype:	IgG
Cross-Reactivity:	Human, Mouse, Rat
Purification:	The antibody was affinity-purified from rabbit antiserum by affinity-chromatography using epitope-specific immunogen.

## Target Details

Target:	TGFBR1
Alternative Name:	TGFBR1 ( <a href="#">TGFBR1 Products</a> )

## Target Details

Background: AAT 5 antibody, AAT5 antibody, Activin A receptor type II like kinase 53 kDa antibody, Activin A receptor type II like kinase antibody, Activin A receptor type II like kinase, 53kD antibody, Activin A receptor type II like protein kinase of 53kD antibody, activin A receptor type II-like kinase, 53 kDa antibody, activin A receptor type II-like protein kinase of 53kD antibody, Activin receptor like kinase 5 antibody, Activin receptor-like kinase 5 antibody, ACVRLK 4 antibody, ACVRLK4 antibody, ALK 5 antibody, ALK-5 antibody, ALK5 antibody, LDS1A antibody, LDS2A antibody, MSSE antibody, Serine/threonine protein kinase receptor R4 antibody, Serine/threonine-protein kinase receptor R4 antibody, SKR 4 antibody, SKR4 antibody, TbetaR I antibody, TbetaR-I antibody, TGF beta receptor type 1 antibody, TGF beta receptor type I antibody, TGF beta type I receptor antibody, TGF-beta receptor type I antibody, TGF-beta receptor type-1 antibody, TGF-beta type I receptor antibody, TGFBR 1 antibody, TGFBR1 antibody, TGFBR1 protein antibody, TGFR 1 antibody, TGFR-1 antibody, TGFR1 antibody, TGFR1\_HUMAN antibody, Transforming growth factor beta receptor 1 antibody, Transforming growth factor beta receptor I (activin A receptor type II like kinase, 53kD) antibody, Transforming growth factor beta receptor I antibody, transforming growth factor, beta receptor 1 antibody, transforming growth factor, beta receptor I (activin A receptor type II-like kinase, 53kD) antibody, Transforming growth factor-beta receptor type I antibody

UniProt: [P36897](#)

Pathways: [Growth Factor Binding](#)

## Application Details

Application Notes: WB:1:500-1:2000, IHC:1:50-1:300, ELISA:1:5000,

Restrictions: For Research Use only

## Handling

Format: Liquid

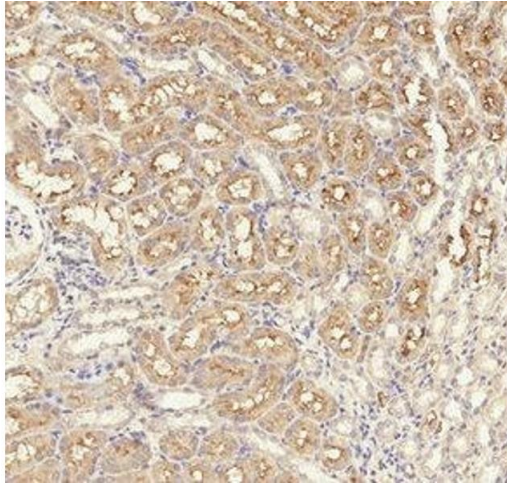
Buffer: Liquid in PBS containing 50 % glycerol, 0.5 % BSA and 0.02 % sodium azide.

Preservative: Sodium azide

Precaution of Use: This product contains Sodium azide: a POISONOUS AND HAZARDOUS SUBSTANCE which should be handled by trained staff only.

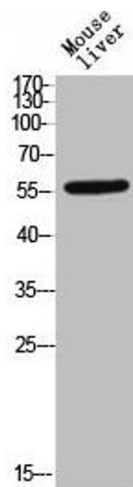
Storage: -20 °C,-80 °C

Storage Comment: Upon receipt, store at -20°C or -80°C. Avoid repeated freeze.



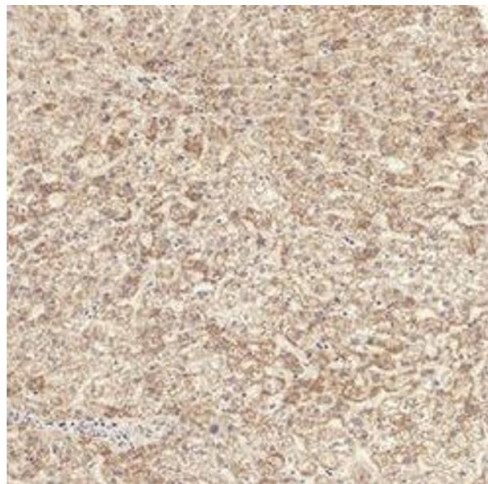
#### Immunohistochemistry

**Image 1.** Immunohistochemical analysis of paraffin-embedded Rat-kidney tissue. 1, TGFβ RI (phospho Ser165) Polyclonal Antibody was diluted at 1:200 (4°C, overnight). 2, Sodium citrate pH 6.0 was used for antibody retrieval (>98°C, 20min). 3, Secondary antibody was diluted at 1:200 (room temperature, 30min).



#### Western Blotting

**Image 2.** Western Blot analysis of MOUSE-LIVER cells using Phospho-TGFβ RI (S165) Polyclonal Antibody



#### Immunohistochemistry

**Image 3.** Immunohistochemical analysis of paraffin-embedded Human-liver tissue. 1, TGFβ RI (phospho Ser165) Polyclonal Antibody was diluted at 1:200 (4°C, overnight). 2, Sodium citrate pH 6.0 was used for antibody retrieval (>98°C, 20min). 3, Secondary antibody was diluted at 1:200 (room temperature, 30min).

Please check the [product details page](#) for more images. Overall 4 images are available for ABIN7193143.