



[Go to Product page](#)

Datasheet for ABIN7193147

## anti-Gliadin antibody

### 1 Image

#### Overview

Quantity:	100 µg
Target:	Gliadin
Reactivity:	Plant
Host:	Rabbit
Clonality:	Polyclonal
Conjugate:	This Gliadin antibody is un-conjugated
Application:	ELISA, Western Blotting (WB)

#### Product Details

Immunogen:	Wheat Gliadin (Native Protein)
Isotype:	IgG
Cross-Reactivity:	Plant
Purification:	>95%, Protein G purified

#### Target Details

Target:	Gliadin
Alternative Name:	Wheat Gliadin
Background:	Wheat Gliadin

## Application Details

Application Notes: Recommended dilution: WB:1:1000-1:5000,

Restrictions: For Research Use only

## Handling

Format: Liquid

Buffer: Preservative: 0.03 % Proclin 300  
Constituents: 50 % Glycerol, 0.01M PBS, PH 7.4

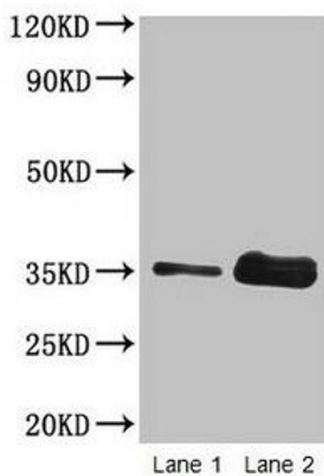
Preservative: ProClin

Precaution of Use: This product contains ProClin: a POISONOUS AND HAZARDOUS SUBSTANCE which should be handled by trained staff only.

Storage: -20 °C,-80 °C

Storage Comment: Upon receipt, store at -20°C or -80°C. Avoid repeated freeze.

## Images



### Western Blotting

**Image 1.** Western blot All lanes: Wheat Gliadin at 2 µg/mL  
Lane 1: Wheat flour at 2 µg Lane 2: Wheat flour at 10 µg  
Secondary Goat polyclonal to rabbit IgG at 1/15000 dilution  
Predicted band size: 35 kDa Observed band size: 35 kDa