



[Go to Product page](#)

Datasheet for ABIN7193157  
**anti-ABL1 antibody (pTyr412)**

2 Images

### Overview

Quantity:	100 µL
Target:	ABL1
Binding Specificity:	pTyr412
Reactivity:	Human
Host:	Rabbit
Clonality:	Polyclonal
Application:	ELISA, Immunohistochemistry (IHC), Immunofluorescence (IF)

### Product Details

Isotype:	IgG
Cross-Reactivity:	Human, Mouse, Rat
Purification:	Affinity purification

### Target Details

Target:	ABL1
Alternative Name:	ABL1 ( <a href="#">ABL1 Products</a> )
Background:	Abelson murine leukemia viral oncogene homolog 1 antibody, Abelson tyrosine protein kinase 1 antibody, Abl 1 antibody, ABL antibody, ABL proto oncogene 1 non receptor tyrosine kinase antibody, ABL1 antibody, ABL1_HUMAN antibody, bcr/abl antibody, bcr/c abl oncogene protein antibody, c ABL antibody, c abl oncogene 1 non receptor tyrosine kinase antibody, c abl oncogene 1 receptor tyrosine kinase antibody, c ABL1 antibody, JTK7 antibody, p150 antibody,

## Target Details

Proto oncogene tyrosine protein kinase ABL1 antibody, Proto-oncogene c-Abl antibody, Tyrosine-protein kinase ABL1 antibody, v abl Abelson murine leukemia viral oncogene homolog 1 antibody, v abl antibody

UniProt: [P00519](#)

Pathways: [Apoptosis](#), [Regulation of Muscle Cell Differentiation](#), [Platelet-derived growth Factor Receptor Signaling](#), [Lipid Metabolism](#)

## Application Details

Application Notes: IHC:1:50-1:100, IF:1:100-1:200,

Restrictions: For Research Use only

## Handling

Format: Liquid

Buffer: Purified Rabbit polyclonal in PBS( pH 7.4) containing with 0.02 % sodium azide and 50 % glycerol.

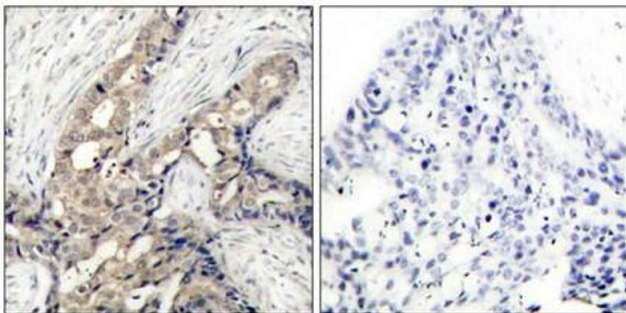
Preservative: Sodium azide

Precaution of Use: This product contains Sodium azide: a POISONOUS AND HAZARDOUS SUBSTANCE which should be handled by trained staff only.

Storage: -20 °C,-80 °C

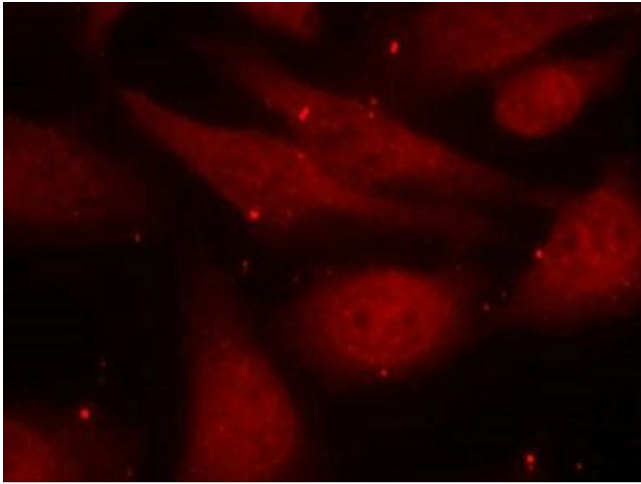
Storage Comment: Upon receipt, store at -20°C or -80°C. Avoid repeated freeze.

## Images



### Immunohistochemistry

**Image 1.** Immunohistochemical analysis of paraffin-embedded human breast carcinoma tissue using c-Abl (phospho-Tyr412) antibody.



### Immunofluorescence

**Image 2.** Immunofluorescence staining of methanol-fixed HeLa cells using c-Abl (phospho-Tyr412) antibody.