



[Go to Product page](#)

Datasheet for ABIN7193159
anti-BCL2L1 antibody (pSer62)

4 Images

Overview

Quantity:	100 µL
Target:	BCL2L1
Binding Specificity:	pSer62
Reactivity:	Human
Host:	Rabbit
Clonality:	Polyclonal
Conjugate:	This BCL2L1 antibody is un-conjugated
Application:	Western Blotting (WB), Immunohistochemistry (IHC), Immunofluorescence (IF), ELISA

Product Details

Isotype:	IgG
Cross-Reactivity:	Human, Mouse, Rat
Purification:	Affinity purification

Target Details

Target:	BCL2L1
Alternative Name:	BCL2L1 (BCL2L1 Products)
Background:	Apoptosis regulator Bcl X antibody, Apoptosis regulator Bcl-X antibody, Apoptosis regulator BclX antibody, B cell lymphoma 2 like antibody, B2CL1_HUMAN antibody, Bcl 2 like 1 protein antibody, Bcl X antibody, Bcl xL antibody, BCL XL/S antibody, Bcl xS antibody, Bcl-2-like protein 1 antibody, Bcl2 Like 1 antibody, Bcl2 related gene antibody, Bcl2-L-1 antibody, BCL2L antibody,

Target Details

Bcl2l1 antibody, BCLX antibody, BclXL antibody, BclXs antibody, DKFZp781P2092 antibody, PPP1R52 antibody, Protein phosphatase 1 regulatory subunit 52 antibody

UniProt: [Q07817](#)

Pathways: [Apoptosis](#), [Negative Regulation of intrinsic apoptotic Signaling](#)

Application Details

Application Notes: WB:1:500-1:1000, IHC:1:50-1:100, IF:1:100-1:200,

Restrictions: For Research Use only

Handling

Format: Liquid

Buffer: Purified Rabbit polyclonal in PBS(pH 7.4) containing with 0.02 % sodium azide and 50 % glycerol.

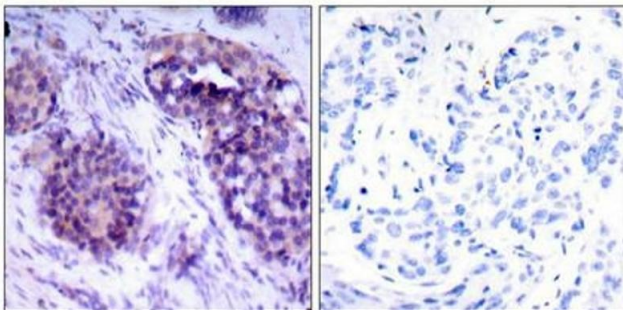
Preservative: Sodium azide

Precaution of Use: This product contains Sodium azide: a POISONOUS AND HAZARDOUS SUBSTANCE which should be handled by trained staff only.

Storage: -20 °C,-80 °C

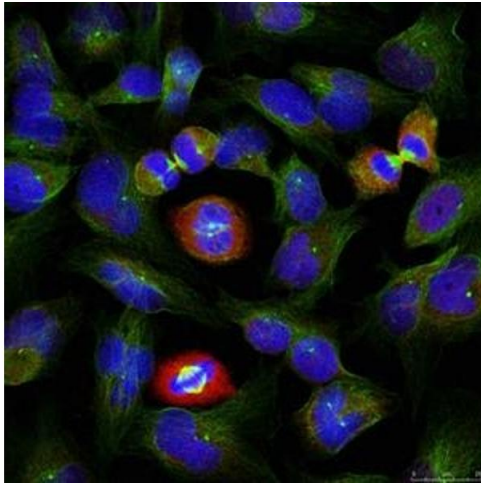
Storage Comment: Upon receipt, store at -20°C or -80°C. Avoid repeated freeze.

Images



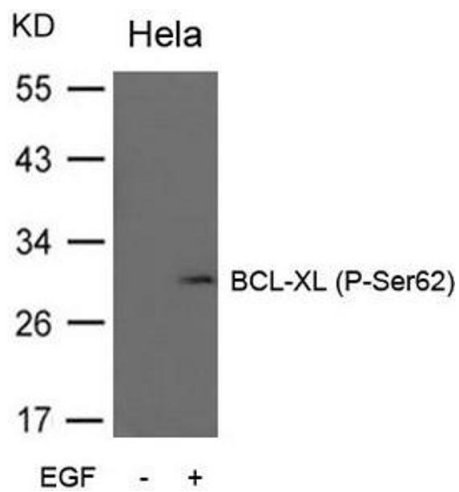
Immunohistochemistry

Image 1. Immunohistochemical analysis of paraffin-embedded human breast carcinoma tissue using BCL-XL (phospho-Ser62) antibody.



Immunofluorescence

Image 2. Immunofluorescence staining of methanol-fixed HeLa cells using BCL-XL (phospho-Ser62) antibody.



Western Blotting

Image 3. Western blot analysis of extracts from HeLa cells untreated or treated with EGF using BCL-XL (Phospho-Ser62) Antibody.

Please check the [product details page](#) for more images. Overall 4 images are available for ABIN7193159.