



Datasheet for ABIN7193211  
**anti-ATG4A antibody (AA 258-398)**



[Go to Product page](#)

4 Images

### Overview

Quantity:	0.1 mg
Target:	ATG4A
Binding Specificity:	AA 258-398
Reactivity:	Human
Host:	Mouse
Clonality:	Monoclonal
Conjugate:	This ATG4A antibody is un-conjugated
Application:	Western Blotting (WB), ELISA, Immunohistochemistry (IHC), Immunocytochemistry (ICC), Flow Cytometry (FACS), Neutralization (Neut)

### Product Details

Immunogen:	Purified recombinant fragment of human ATG4A (AA: 258-398) expressed in E. coli.
Clone:	8E8G2
Isotype:	IgG1
Purification:	purified

### Target Details

Target:	ATG4A
Alternative Name:	ATG4A ( <a href="#">ATG4A Products</a> )
Background:	Description: Autophagy is the process by which endogenous proteins and damaged organelles

## Target Details

---

are destroyed intracellularly. Autophagy is postulated to be essential for cell homeostasis and cell remodeling during differentiation, metamorphosis, non-apoptotic cell death, and aging. Reduced levels of autophagy have been described in some malignant tumors, and a role for autophagy in controlling the unregulated cell growth linked to cancer has been proposed. This gene encodes a member of the autophagin protein family. The encoded protein is also designated as a member of the C-54 family of cysteine proteases.

Aliases: APG4A, AUTL2

---

Molecular Weight:	45.4 kDa
-------------------	----------

---

Gene ID:	115201
----------	--------

---

Pathways:	<a href="#">Autophagy</a>
-----------	---------------------------

## Application Details

---

---

Application Notes:	ELISA: 1:10000, WB: 1:500 - 1:2000, FCM: 1:200 - 1:400, ICC: N/A, IHC: N/A
--------------------	--

---

Restrictions:	For Research Use only
---------------	-----------------------

## Handling

---

---

Buffer:	Purified antibody in PBS with 0.05 % sodium azide
---------	---

---

Preservative:	Sodium azide
---------------	--------------

---

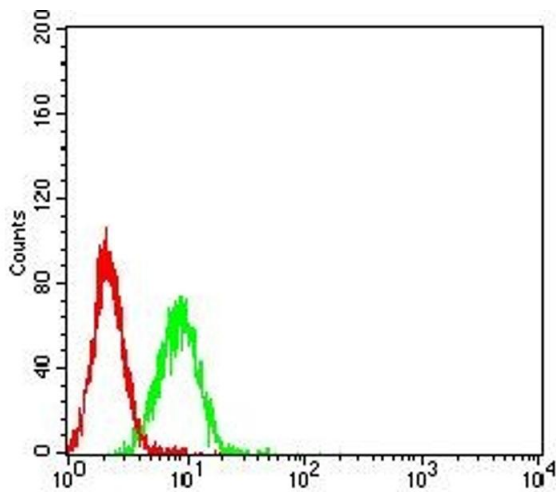
Precaution of Use:	This product contains Sodium azide: a POISONOUS AND HAZARDOUS SUBSTANCE which should be handled by trained staff only.
--------------------	--

---

Storage:	4 °C/-20 °C
----------	-------------

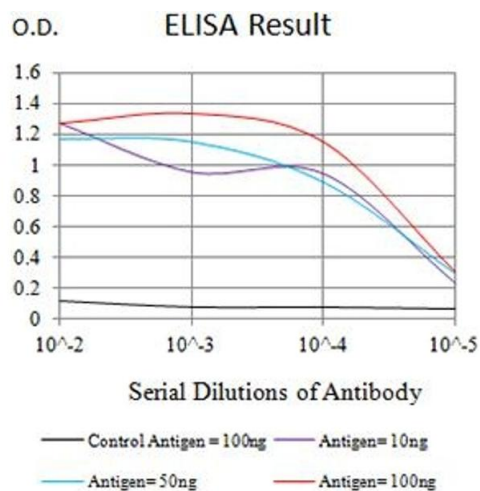
---

Storage Comment:	4°C, -20°C for long term storage
------------------	----------------------------------



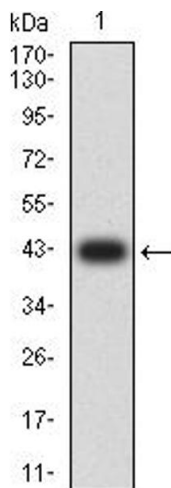
### Flow Cytometry

**Image 1.** Flow cytometric analysis of K562 cells using ATG4A mouse mAb (green) and negative control (red).



### ELISA

**Image 2.** Black line: Control Antigen (100 ng), Purple line: Antigen (10 ng), Blue line: Antigen (50 ng), Red line: Antigen (100 ng)



### Western Blotting

**Image 3.** Western blot analysis using ATG4A mAb against human ATG4A (AA: 258-398) recombinant protein. (Expected MW is 42.2 kDa)

Please check the [product details page](#) for more images. Overall 4 images are available for ABIN7193211.