

Datasheet for ABIN7193221  
**anti-LILRA2 antibody (AA 316-449)**[Go to Product page](#)

## 4 Images

## Overview

Quantity:	0.1 mg
Target:	LILRA2
Binding Specificity:	AA 316-449
Reactivity:	Human
Host:	Mouse
Clonality:	Monoclonal
Conjugate:	This LILRA2 antibody is un-conjugated
Application:	Western Blotting (WB), ELISA, Flow Cytometry (FACS), Immunohistochemistry (IHC), Immunocytochemistry (ICC), Neutralization (Neut)

## Product Details

Immunogen:	Purified recombinant fragment of human LILRA2 (AA: extra 316-449) expressed in E. coli.
Clone:	2G5E12
Isotype:	IgG1
Purification:	purified

## Target Details

Target:	LILRA2
Alternative Name:	LILRA2 ( <a href="#">LILRA2 Products</a> )
Background:	Description: This gene encodes a member of a family of immunoreceptors that are expressed

## Target Details

predominantly on monocytes and B cells, and at lower levels on dendritic cells and natural killer cells. The encoded protein is an activating receptor that inhibits dendritic cell differentiation and antigen presentation and suppresses innate immune response. Alternatively spliced transcript variants encoding different isoforms have been found. This gene is located in a cluster of related genes on chromosome 19 and there is a pseudogene for this gene on chromosome 3.

Aliases: ILT1, LIR7, CD85H, LIR-7

Molecular Weight: 53 kDa

Gene ID: 11027

## Application Details

Application Notes: ELISA: 1:10000, WB: 1:500 - 1:2000, FCM: 1:200 - 1:400, ICC: N/A, IHC: N/A

Restrictions: For Research Use only

## Handling

Buffer: Purified antibody in PBS with 0.05 % sodium azide

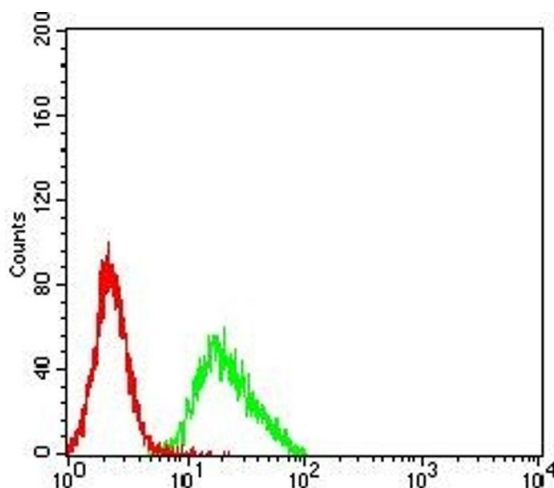
Preservative: Sodium azide

Precaution of Use: This product contains Sodium azide: a POISONOUS AND HAZARDOUS SUBSTANCE which should be handled by trained staff only.

Storage: 4 °C/-20 °C

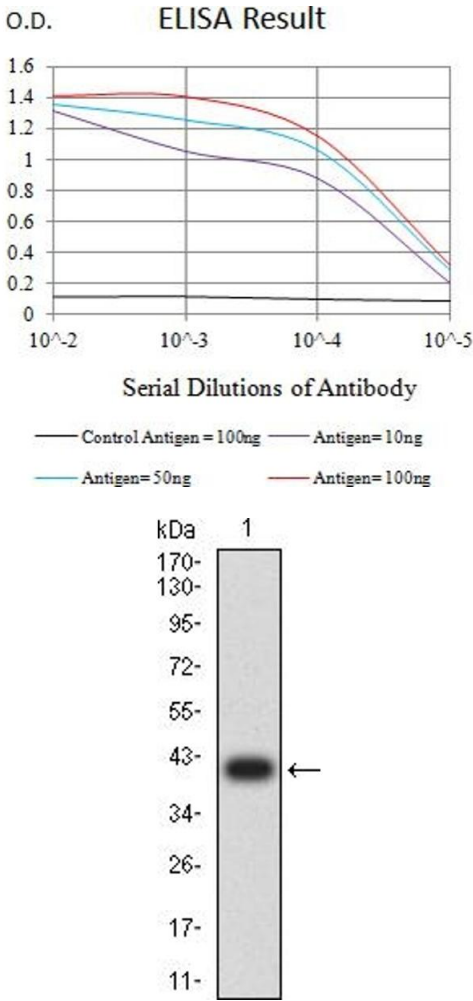
Storage Comment: 4°C, -20°C for long term storage

## Images



### Flow Cytometry

**Image 1.** Flow cytometric analysis of K562 cells using LILRA2 mouse mAb (green) and negative control (red).



### ELISA

**Image 2.** Black line: Control Antigen (100 ng),Purple line: Antigen (10 ng), Blue line: Antigen (50 ng), Red line:Antigen (100 ng)

### Western Blotting

**Image 3.** Western blot analysis using LILRA2 mAb against human LILRA2 (AA: extra 316-449) recombinant protein. (Expected MW is 40.6 kDa)

Please check the [product details page](#) for more images. Overall 4 images are available for ABIN7193221.