

Datasheet for ABIN7193226
anti-SLAMF6 antibody (AA 22-226)



[Go to Product page](#)

6 Images

Overview

Quantity:	0.1 mg
Target:	SLAMF6
Binding Specificity:	AA 22-226
Reactivity:	Human
Host:	Mouse
Clonality:	Monoclonal
Conjugate:	This SLAMF6 antibody is un-conjugated
Application:	Western Blotting (WB), ELISA, Flow Cytometry (FACS), Immunohistochemistry (IHC), Immunocytochemistry (ICC), Neutralization (Neut)

Product Details

Immunogen:	Purified recombinant fragment of human CD352 (AA: extra 22-226) expressed in E. coli.
Clone:	2F1C9
Isotype:	IgG1
Purification:	purified

Target Details

Target:	SLAMF6
Alternative Name:	CD352 (SLAMF6 Products)
Background:	Description: The protein encoded by this gene is a type I transmembrane protein, belonging to

Target Details

the CD2 subfamily of the immunoglobulin superfamily. This encoded protein is expressed on Natural killer (NK), T, and B lymphocytes. It undergoes tyrosine phosphorylation and associates with the Src homology 2 domain-containing protein (SH2D1A) as well as with SH2 domain-containing phosphatases (SHPs). It functions as a coreceptor in the process of NK cell activation. It can also mediate inhibitory signals in NK cells from X-linked lymphoproliferative patients. Alternative splicing results in multiple transcript variants encoding distinct isoforms.
Aliases: SLAMF6, KALI, NTBA, KAL1b, Ly108, NTB-A, SF2000

Molecular Weight: 37.4 kDa

Gene ID: 114836

Application Details

Application Notes: ELISA: 1:10000, WB: 1:500 - 1:2000, FCM: 1:200 - 1:400, ICC: N/A, IHC: 1:200 - 1:1000

Restrictions: For Research Use only

Handling

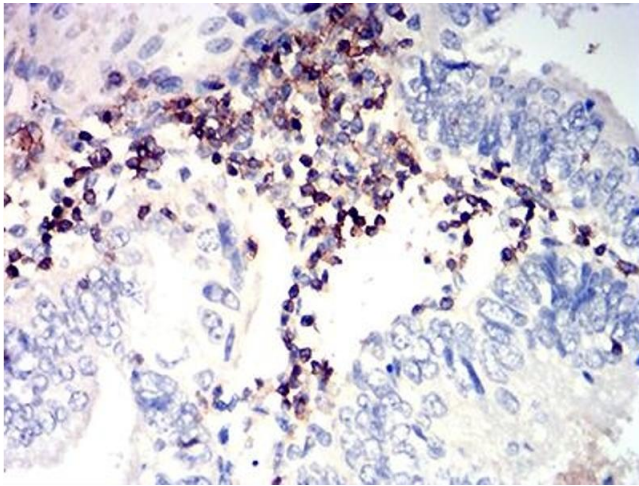
Buffer: Purified antibody in PBS with 0.05 % sodium azide

Preservative: Sodium azide

Precaution of Use: This product contains Sodium azide: a POISONOUS AND HAZARDOUS SUBSTANCE which should be handled by trained staff only.

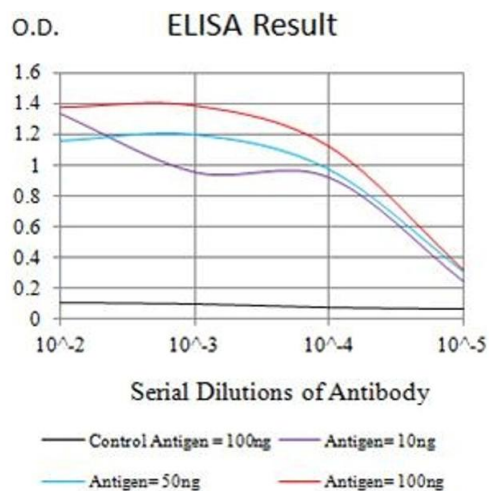
Storage: 4 °C/-20 °C

Storage Comment: 4°C, -20°C for long term storage



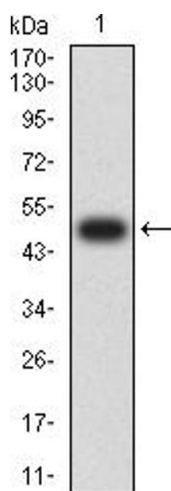
Immunohistochemistry

Image 1. Immunohistochemical analysis of paraffin-embedded endometrial cancer tissues using CD352 mouse mAb with DAB staining.



ELISA

Image 2. Black line: Control Antigen (100 ng), Purple line: Antigen (10 ng), Blue line: Antigen (50 ng), Red line: Antigen (100 ng)



Western Blotting

Image 3. Western blot analysis using CD352 mAb against human CD352 (AA: extra 22-226) recombinant protein. (Expected MW is 49 kDa)

Please check the [product details page](#) for more images. Overall 6 images are available for ABIN7193226.