

Datasheet for ABIN7193234
anti-PSG1 antibody (AA 250-419)



[Go to Product page](#)

4 Images

Overview

| | |
|----------------------|---|
| Quantity: | 0.1 mg |
| Target: | PSG1 |
| Binding Specificity: | AA 250-419 |
| Reactivity: | Human |
| Host: | Mouse |
| Clonality: | Monoclonal |
| Conjugate: | This PSG1 antibody is un-conjugated |
| Application: | Western Blotting (WB), Immunohistochemistry (IHC), ELISA, Immunocytochemistry (ICC), Flow Cytometry (FACS), Neutralization (Neut) |

Product Details

| | |
|---------------|---|
| Immunogen: | Purified recombinant fragment of human PSG1 (AA: 250-419) expressed in E. coli. |
| Clone: | 5C6G7 |
| Isotype: | IgG1 |
| Purification: | purified |

Target Details

| | |
|-------------------|--|
| Target: | PSG1 |
| Alternative Name: | PSG1 (PSG1 Products) |
| Background: | Description: The human placenta is a multihormonal endocrine organ that produces hormones, |

Target Details

enzymes, and other molecules that support fetal survival and development. Pregnancy-specific beta-1-glycoprotein (PSBG, PSG) is a major product of the syncytiotrophoblast, reaching concentrations of 100 to 290 mg/l at term in the serum of pregnant women (Horne et al., 1976 [PubMed 971765]). PSG is a member of the immunoglobulin (Ig) superfamily (Watanabe and Chou, 1988 [PubMed 3257488], Streydio et al., 1988

Aliases: SP1, B1G1, PBG1, CD66f, PSBG1, PSG95, PSGGA, DHFRP2, PSBG-1, PSGIIA, FL-NCA-1/2, PS-beta-C/D, PS-beta-G-1

Molecular Weight: 47.2 kDa

Gene ID: 5669

Application Details

Application Notes: ELISA: 1:10000, WB: 1:500 - 1:2000, FCM: 1:200 - 1:400, ICC: N/A, IHC: N/A

Restrictions: For Research Use only

Handling

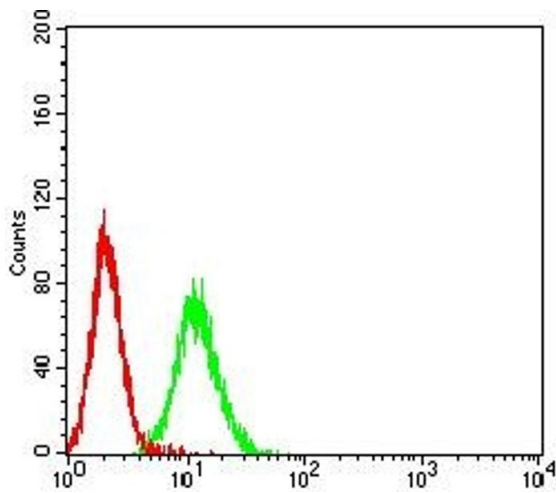
Buffer: Purified antibody in PBS with 0.05 % sodium azide

Preservative: Sodium azide

Precaution of Use: This product contains Sodium azide: a POISONOUS AND HAZARDOUS SUBSTANCE which should be handled by trained staff only.

Storage: 4 °C/-20 °C

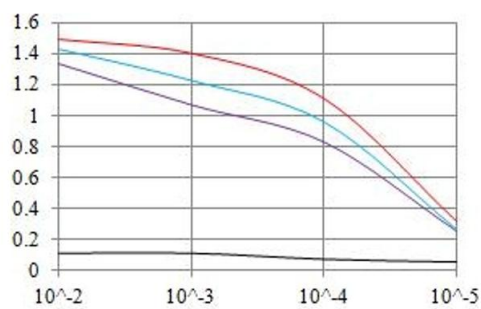
Storage Comment: 4°C, -20°C for long term storage



Flow Cytometry

Image 1. Flow cytometric analysis of K562 cells using PSG1 mouse mAb (green) and negative control (red).

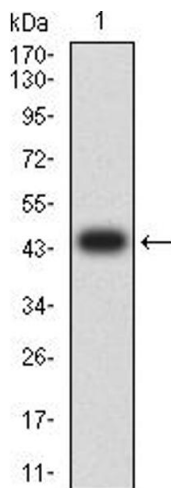
O.D. ELISA Result



— Control Antigen = 100ng — Antigen = 10ng
 — Antigen = 50ng — Antigen = 100ng

ELISA

Image 2. Black line: Control Antigen (100 ng), Purple line: Antigen (10 ng), Blue line: Antigen (50 ng), Red line: Antigen (100 ng)



Western Blotting

Image 3. Western blot analysis using PSG1 mAb against human PSG1 (AA: 250-419) recombinant protein. (Expected MW is 45.4 kDa)

Please check the [product details page](#) for more images. Overall 4 images are available for ABIN7193234.