

Datasheet for ABIN7193239
anti-BTN1A1 antibody (AA 27-242)

5 Images

[Go to Product page](#)

Overview

Quantity:	0.1 mg
Target:	BTN1A1
Binding Specificity:	AA 27-242
Reactivity:	Human
Host:	Mouse
Clonality:	Monoclonal
Conjugate:	This BTN1A1 antibody is un-conjugated
Application:	Western Blotting (WB), ELISA, Flow Cytometry (FACS), Immunohistochemistry (IHC), Immunocytochemistry (ICC), Neutralization (Neut)

Product Details

Immunogen:	Purified recombinant fragment of human BTN1A1 (AA: extra 27-242) expressed in E. coli.
Clone:	4B11B3
Isotype:	IgG2b
Purification:	purified

Target Details

Target:	BTN1A1
Alternative Name:	BTN1A1 (BTN1A1 Products)
Background:	Description: Butyrophilin is the major protein associated with fat droplets in the milk. It is a

Target Details

member of the immunoglobulin superfamily. It may have a cell surface receptor function. The human butyrophilin gene is localized in the major histocompatibility complex (MHC) class I region of 6p and may have arisen relatively recently in evolution by the shuffling of exons between 2 ancestral gene families

Aliases: BT, BTN, BTN1

Molecular Weight: 58.9 kDa

Gene ID: 696

Pathways: [Activated T Cell Proliferation](#)

Application Details

Application Notes: ELISA: 1:10000, WB: 1:500 - 1:2000, FCM: 1:200 - 1:400, ICC: N/A, IHC: N/A

Restrictions: For Research Use only

Handling

Buffer: Purified antibody in PBS with 0.05 % sodium azide

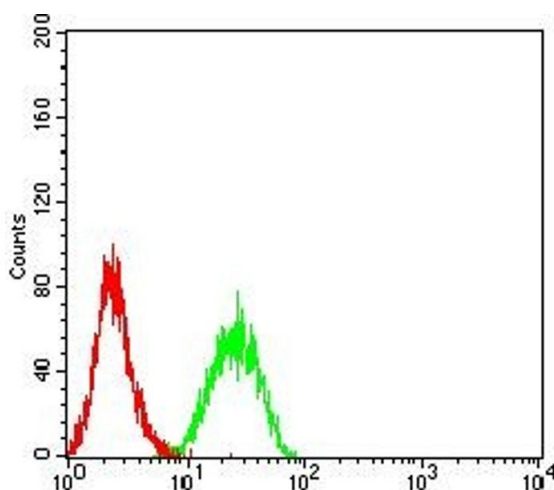
Preservative: Sodium azide

Precaution of Use: This product contains Sodium azide: a POISONOUS AND HAZARDOUS SUBSTANCE which should be handled by trained staff only.

Storage: 4 °C/-20 °C

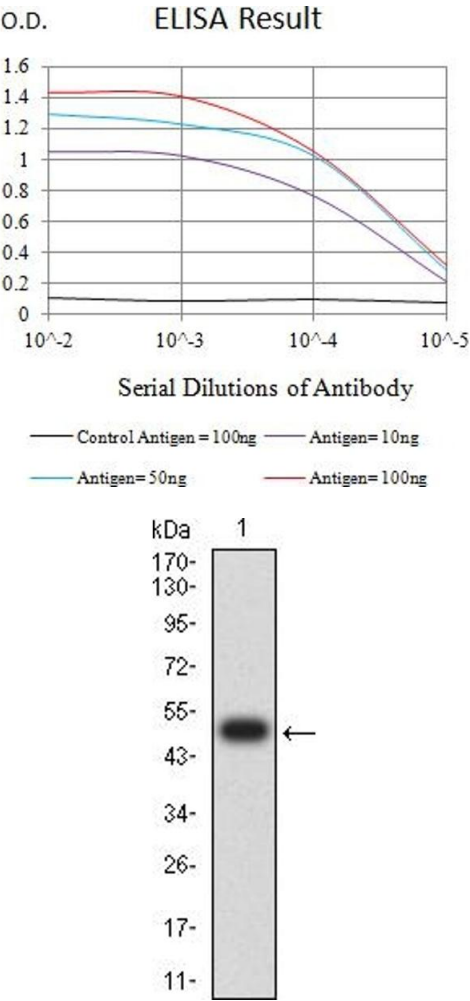
Storage Comment: 4°C, -20°C for long term storage

Images



Flow Cytometry

Image 1. Flow cytometric analysis of K562 cells using BTN1A1 mouse mAb (green) and negative control (red).



ELISA

Image 2. Black line: Control Antigen (100 ng),Purple line: Antigen (10 ng), Blue line: Antigen (50 ng), Red line:Antigen (100 ng)

Western Blotting

Image 3. Western blot analysis using BTN1A1 mAb against human BTN1A1 (AA: extra 27-242) recombinant protein. (Expected MW is 50 kDa)

Please check the [product details page](#) for more images. Overall 5 images are available for ABIN7193239.