

Datasheet for ABIN7193243  
**anti-PD-L1 antibody (AA 24-153)**

## 6 Images

[Go to Product page](#)

## Overview

Quantity:	0.1 mg
Target:	PD-L1
Binding Specificity:	AA 24-153
Reactivity:	Human
Host:	Mouse
Clonality:	Monoclonal
Conjugate:	This PD-L1 antibody is un-conjugated
Application:	Western Blotting (WB), Flow Cytometry (FACS), Immunohistochemistry (IHC), ELISA, Immunocytochemistry (ICC), Neutralization (Neut)

## Product Details

Immunogen:	Purified recombinant fragment of human CD274 (AA: 24-153) expressed in E. coli.
Clone:	6D9A2
Isotype:	IgG2b
Purification:	purified

## Target Details

Target:	PD-L1
Alternative Name:	CD274 ( <a href="#">PD-L1 Products</a> )
Background:	Description: This gene encodes an immune inhibitory receptor ligand that is expressed by

## Target Details

hematopoietic and non-hematopoietic cells, such as T cells and B cells and various types of tumor cells. The encoded protein is a type I transmembrane protein that has immunoglobulin V-like and C-like domains. Interaction of this ligand with its receptor inhibits T-cell activation and cytokine production. During infection or inflammation of normal tissue, this interaction is important for preventing autoimmunity by maintaining homeostasis of the immune response. In tumor microenvironments, this interaction provides an immune escape for tumor cells through cytotoxic T-cell inactivation. Expression of this gene in tumor cells is considered to be prognostic in many types of human malignancies, including colon cancer and renal cell carcinoma. Alternative splicing results in multiple transcript variants.

Aliases: B7-H, B7H1, PDL1, PD-L1, PDCD1L1, PDCD1LG1

Molecular Weight: 33.3 kDa

Gene ID: 29126

Pathways: [Cancer Immune Checkpoints](#)

## Application Details

Application Notes: ELISA: 1:10000, WB: 1:500 - 1:2000, FCM: 1:200 - 1:400, ICC: N/A, IHC: 1:200 - 1:1000

Restrictions: For Research Use only

## Handling

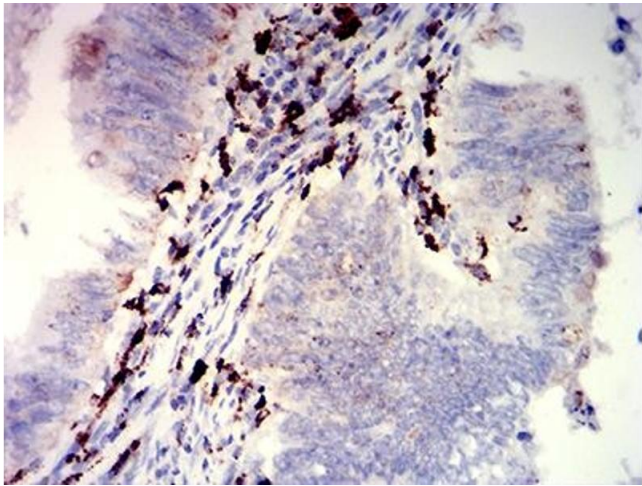
Buffer: Purified antibody in PBS with 0.05 % sodium azide

Preservative: Sodium azide

Precaution of Use: This product contains Sodium azide: a POISONOUS AND HAZARDOUS SUBSTANCE which should be handled by trained staff only.

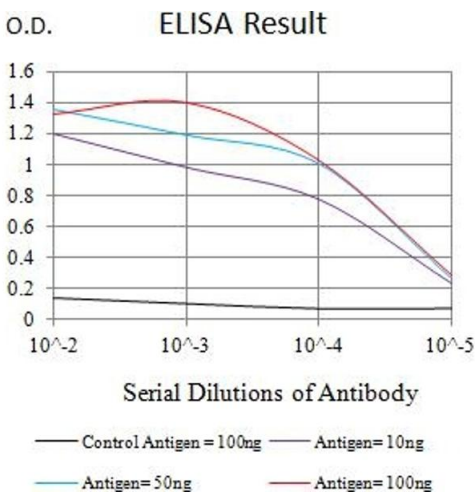
Storage: 4 °C/-20 °C

Storage Comment: 4°C, -20°C for long term storage



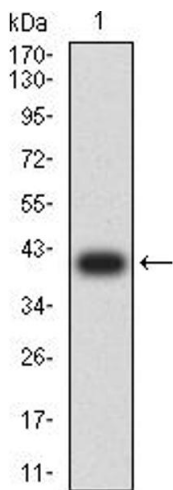
### Immunohistochemistry

**Image 1.** Immunohistochemical analysis of paraffin-embedded rectum cancer tissues using CD274 mouse mAb with DAB staining.



### ELISA

**Image 2.** Black line: Control Antigen (100 ng),Purple line: Antigen (10 ng), Blue line: Antigen (50 ng), Red line:Antigen (100 ng)



### Western Blotting

**Image 3.** Western blot analysis using CD274 mAb against human CD274 (AA: 24-153) recombinant protein. (Expected MW is 40.1 kDa)

Please check the [product details page](#) for more images. Overall 6 images are available for ABIN7193243.