

Datasheet for ABIN7193246
anti-SLAMF8 antibody (AA 23-233)[Go to Product page](#)

4 Images

Overview

Quantity:	0.1 mg
Target:	SLAMF8
Binding Specificity:	AA 23-233
Reactivity:	Human
Host:	Mouse
Clonality:	Monoclonal
Conjugate:	This SLAMF8 antibody is un-conjugated
Application:	ELISA, Western Blotting (WB), Immunohistochemistry (IHC), Flow Cytometry (FACS), Immunocytochemistry (ICC), Neutralization (Neut)

Product Details

Immunogen:	Purified recombinant fragment of human CD353 (AA: extra 23-233) expressed in E. coli.
Clone:	6A4E2C4
Isotype:	IgG2b
Purification:	purified

Target Details

Target:	SLAMF8
Alternative Name:	CD353 (SLAMF8 Products)
Background:	Description: This gene encodes a member of the CD2 family of cell surface proteins involved in

Target Details

lymphocyte activation. These proteins are characterized by Ig domains. This protein is expressed in lymphoid tissues, and studies of a similar protein in mouse suggest that it may function during B cell lineage commitment. The gene is found in a region of chromosome 1 containing many CD2 genes.

Aliases: SLAMF8, BLAME, SBBI42

Molecular Weight: 31.7 kDa

Gene ID: 56833

Application Details

Application Notes: ELISA: 1:10000, WB: 1:500 - 1:2000, FCM: 1:200 - 1:400, ICC: N/A, IHC: N/A

Restrictions: For Research Use only

Handling

Buffer: Purified antibody in PBS with 0.05 % sodium azide

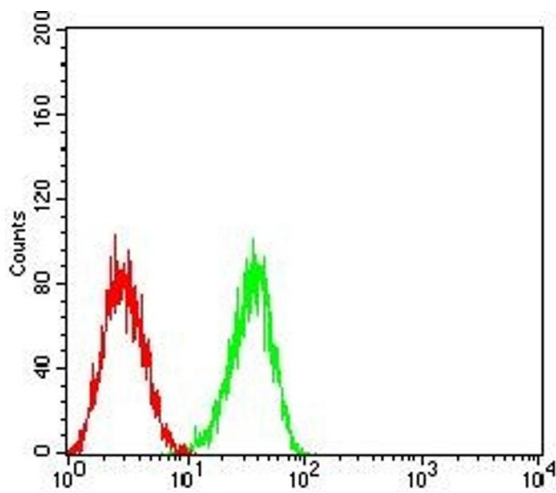
Preservative: Sodium azide

Precaution of Use: This product contains Sodium azide: a POISONOUS AND HAZARDOUS SUBSTANCE which should be handled by trained staff only.

Storage: 4 °C/-20 °C

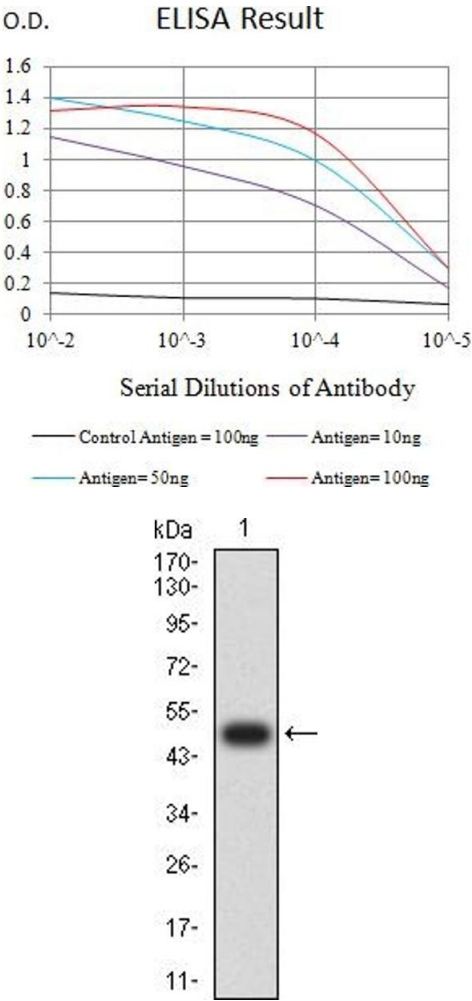
Storage Comment: 4°C, -20°C for long term storage

Images



Flow Cytometry

Image 1. Flow cytometric analysis of HL-60 cells using CD353 mouse mAb (green) and negative control (red).



ELISA

Image 2. Black line: Control Antigen (100 ng),Purple line: Antigen (10 ng), Blue line: Antigen (50 ng), Red line:Antigen (100 ng)

Western Blotting

Image 3. Western blot analysis using CD353 mAb against human CD353 (AA: extra 23-233) recombinant protein. (Expected MW is 49.3 kDa)

Please check the [product details page](#) for more images. Overall 4 images are available for ABIN7193246.