

Datasheet for ABIN7193248
anti-BCL10 antibody (AA 98-234)[Go to Product page](#)

4 Images

Overview

Quantity:	0.1 mg
Target:	BCL10
Binding Specificity:	AA 98-234
Reactivity:	Human
Host:	Mouse
Clonality:	Monoclonal
Conjugate:	This BCL10 antibody is un-conjugated
Application:	Western Blotting (WB), Immunohistochemistry (IHC), ELISA, Flow Cytometry (FACS), Immunocytochemistry (ICC), Neutralization (Neut)

Product Details

Immunogen:	Purified recombinant fragment of human BCL10 (AA: 98-234) expressed in E. coli.
Clone:	3C11F4
Isotype:	IgG1
Purification:	purified

Target Details

Target:	BCL10
Alternative Name:	BCL10 (BCL10 Products)
Background:	Description: This gene was identified by its translocation in a case of mucosa-associated

Target Details

lymphoid tissue (MALT) lymphoma. The protein encoded by this gene contains a caspase recruitment domain (CARD), and has been shown to induce apoptosis and to activate NF-kappaB. This protein is reported to interact with other CARD domain containing proteins including CARD9, 10, 11 and 14, which are thought to function as upstream regulators in NF-kappaB signaling. This protein is found to form a complex with MALT1, a protein encoded by another gene known to be translocated in MALT lymphoma. MALT1 and this protein are thought to synergize in the activation of NF-kappaB, and the deregulation of either of them may contribute to the same pathogenetic process that leads to the malignancy. Alternative splicing results in multiple transcript variants.

Aliases: CLAP, mE10, CIPER, IMD37, c-E10, CARMEN

Molecular Weight: 26.3 kDa

Gene ID: 8915

Pathways: [TCR Signaling](#), [Fc-epsilon Receptor Signaling Pathway](#), [Activation of Innate immune Response](#), [Positive Regulation of Immune Effector Process](#), [Production of Molecular Mediator of Immune Response](#), [Tube Formation](#), [Positive Regulation of Endopeptidase Activity](#), [BCR Signaling](#), [Ubiquitin Proteasome Pathway](#), [S100 Proteins](#)

Application Details

Application Notes: ELISA: 1:10000, WB: 1:500 - 1:2000, FCM: 1:200 - 1:400, ICC: N/A, IHC: N/A

Restrictions: For Research Use only

Handling

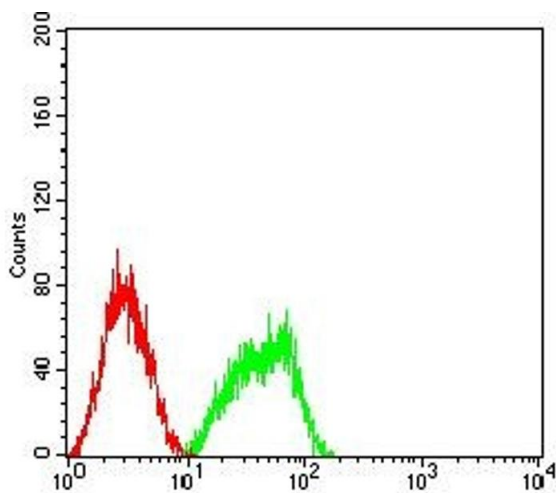
Buffer: Purified antibody in PBS with 0.05 % sodium azide

Preservative: Sodium azide

Precaution of Use: This product contains Sodium azide: a POISONOUS AND HAZARDOUS SUBSTANCE which should be handled by trained staff only.

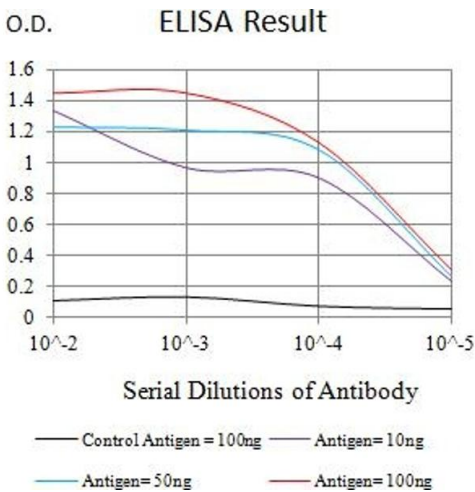
Storage: 4 °C/-20 °C

Storage Comment: 4°C, -20°C for long term storage



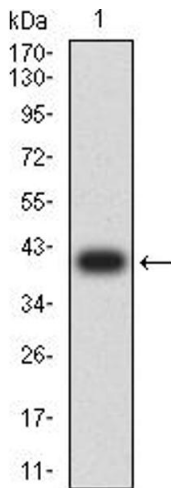
Flow Cytometry

Image 1. Flow cytometric analysis of HL-60 cells using BCL10 mouse mAb (green) and negative control (red).



ELISA

Image 2. Black line: Control Antigen (100 ng),Purple line: Antigen (10 ng), Blue line: Antigen (50 ng), Red line:Antigen (100 ng)



Western Blotting

Image 3. Western blot analysis using BCL10 mAb against human BCL10 (AA: 98-234) recombinant protein. (Expected MW is 40.9 kDa)

Please check the [product details page](#) for more images. Overall 4 images are available for ABIN7193248.