

Datasheet for ABIN7193253  
**anti-CLEC12A antibody (AA 65-265)**

## 5 Images

[Go to Product page](#)

## Overview

Quantity:	0.1 mg
Target:	CLEC12A
Binding Specificity:	AA 65-265
Reactivity:	Human
Host:	Mouse
Clonality:	Monoclonal
Conjugate:	This CLEC12A antibody is un-conjugated
Application:	Western Blotting (WB), ELISA, Immunohistochemistry (IHC), Flow Cytometry (FACS), Immunocytochemistry (ICC), Neutralization (Neut)

## Product Details

Immunogen:	Purified recombinant fragment of human CLL1 (AA: extra 65-265) expressed in E. coli.
Clone:	4D5A8
Isotype:	IgG2a
Purification:	purified

## Target Details

Target:	CLEC12A
Alternative Name:	CLL1 ( <a href="#">CLEC12A Products</a> )
Background:	Description: This gene encodes a member of the C-type lectin/C-type lectin-like domain

## Target Details

(CTL/CTLD) superfamily. Members of this family share a common protein fold and have diverse functions, such as cell adhesion, cell-cell signaling, glycoprotein turnover, and roles in inflammation and immune response. The protein encoded by this gene is a negative regulator of granulocyte and monocyte function. Several alternatively spliced transcript variants of this gene have been described, but the full-length nature of some of these variants has not been determined. This gene is closely linked to other CTL/CTLD superfamily members in the natural killer gene complex region on chromosome 12p13.

Aliases: CLEC12A, MICL, CD371, CLL-1, DCAL-2

Molecular Weight:	30.8 kDa
-------------------	----------

Gene ID:	160364
----------	--------

## Application Details

Application Notes:	ELISA: 1:10000, WB: 1:500 - 1:2000, FCM: 1:200 - 1:400, ICC: N/A, IHC: N/A, ICC: 1:200 - 1:500
--------------------	--

Restrictions:	For Research Use only
---------------	-----------------------

## Handling

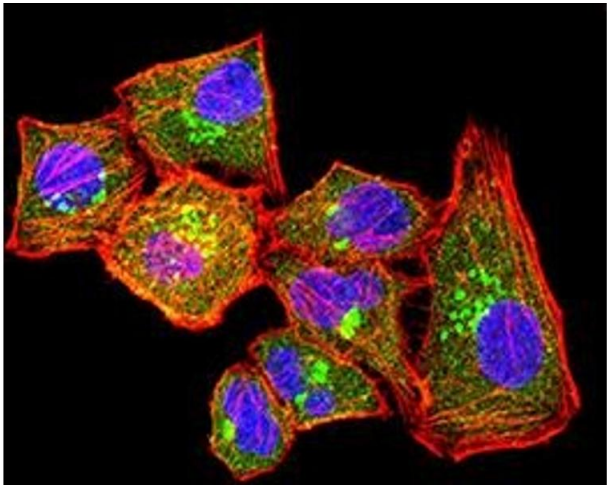
Buffer:	Purified antibody in PBS with 0.05 % sodium azide
---------	---

Preservative:	Sodium azide
---------------	--------------

Precaution of Use:	This product contains Sodium azide: a POISONOUS AND HAZARDOUS SUBSTANCE which should be handled by trained staff only.
--------------------	--

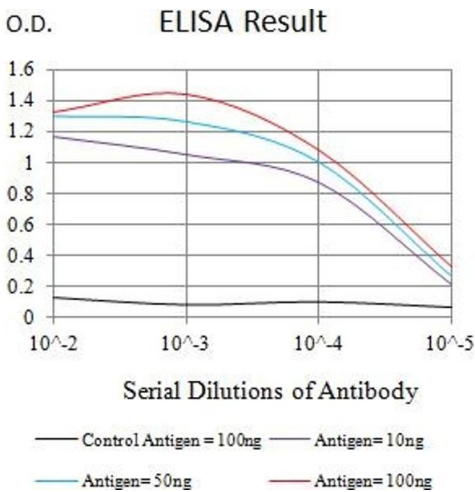
Storage:	4 °C/-20 °C
----------	-------------

Storage Comment:	4°C, -20°C for long term storage
------------------	----------------------------------



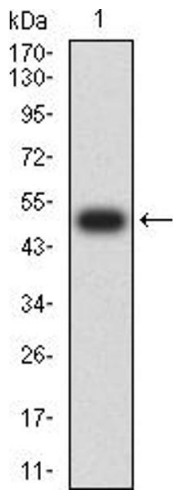
Immunofluorescence

**Image 1.** Immunofluorescence analysis of HeLa cells using CLL1 mouse mAb (green). Blue: DRAQ5 fluorescent DNA dye. Red: Actin filaments have been labeled with Alexa Fluor- 555 phalloidin. Secondary antibody from Fisher (Cat#: 35503)



ELISA

**Image 2.** Black line: Control Antigen (100 ng),Purple line: Antigen (10 ng), Blue line: Antigen (50 ng), Red line:Antigen (100 ng)



Western Blotting

**Image 3.** Western blot analysis using CLL1 mAb against human CLL1 (AA: extra 65-265) recombinant protein. (Expected MW is 49.7 kDa)

Please check the [product details page](#) for more images. Overall 5 images are available for ABIN7193253.