

Datasheet for ABIN7193257
anti-PTPRJ antibody (AA 36-210)[Go to Product page](#)

4 Images

Overview

| | |
|----------------------|---|
| Quantity: | 0.1 mg |
| Target: | PTPRJ |
| Binding Specificity: | AA 36-210 |
| Reactivity: | Human |
| Host: | Mouse |
| Clonality: | Monoclonal |
| Application: | Western Blotting (WB), ELISA, Immunohistochemistry (IHC), Flow Cytometry (FACS), Immunocytochemistry (ICC), Neutralization (Neut) |

Product Details

| | |
|---------------|---|
| Immunogen: | Purified recombinant fragment of human CD148 (AA: extra 36-210) expressed in E. coli. |
| Clone: | 6F2E12 |
| Isotype: | IgG1 |
| Purification: | purified |

Target Details

| | |
|-------------------|--|
| Target: | PTPRJ |
| Alternative Name: | CD148 (PTPRJ Products) |
| Background: | Description: The protein encoded by this gene is a member of the protein tyrosine phosphatase (PTP) family. PTPs are known to be signaling molecules that regulate a variety of cellular processes, including cell growth, differentiation, mitotic cycle, and oncogenic transformation. |

Target Details

This PTP possesses an extracellular region containing five fibronectin type III repeats, a single transmembrane region, and a single intracytoplasmic catalytic domain, and thus represents a receptor-type PTP. This protein is present in all hematopoietic lineages, and was shown to negatively regulate T cell receptor signaling possibly through interfering with the phosphorylation of Phospholipase C Gamma 1 and Linker for Activation of T Cells. This protein can also dephosphorylate the PDGF beta receptor, and may be involved in UV-induced signal transduction. Multiple transcript variants encoding different isoforms have been found for this gene.

Aliases: PTPRJ, DEP1, SCC1, HPTPeta, R-PTP-ETA

| | |
|-------------------|---------|
| Molecular Weight: | 146 kDa |
|-------------------|---------|

| | |
|----------|------|
| Gene ID: | 5795 |
|----------|------|

| | |
|-----------|--|
| Pathways: | EGFR Signaling Pathway , Platelet-derived growth Factor Receptor Signaling |
|-----------|--|

Application Details

| | |
|--------------------|--|
| Application Notes: | ELISA: 1:10000, WB: 1:500 - 1:2000, FCM: 1:200 - 1:400, ICC: N/A, IHC: N/A |
|--------------------|--|

| | |
|---------------|-----------------------|
| Restrictions: | For Research Use only |
|---------------|-----------------------|

Handling

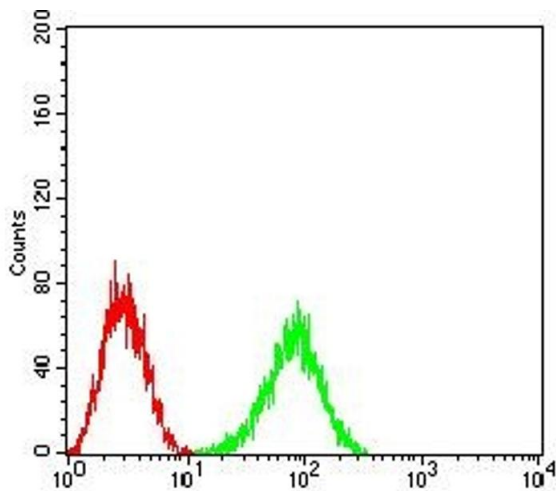
| | |
|---------|---|
| Buffer: | Purified antibody in PBS with 0.05 % sodium azide |
|---------|---|

| | |
|---------------|--------------|
| Preservative: | Sodium azide |
|---------------|--------------|

| | |
|--------------------|--|
| Precaution of Use: | This product contains Sodium azide: a POISONOUS AND HAZARDOUS SUBSTANCE which should be handled by trained staff only. |
|--------------------|--|

| | |
|----------|-------------|
| Storage: | 4 °C/-20 °C |
|----------|-------------|

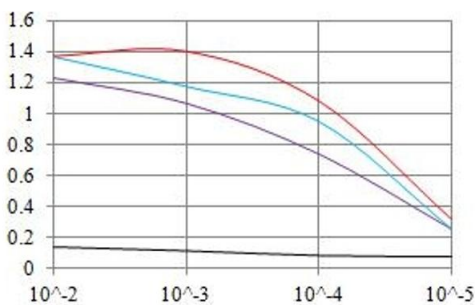
| | |
|------------------|----------------------------------|
| Storage Comment: | 4°C, -20°C for long term storage |
|------------------|----------------------------------|



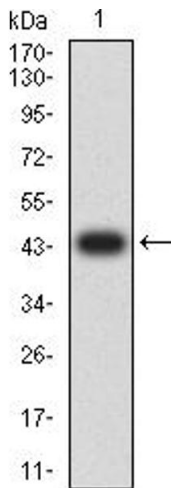
Flow Cytometry

Image 1. Flow cytometric analysis of HL-60 cells using CD148 mouse mAb (green) and negative control (red).

O.D. ELISA Result



— Control Antigen = 100ng — Antigen = 10ng
— Antigen = 50ng — Antigen = 100ng



ELISA

Image 2. Black line: Control Antigen (100 ng), Purple line: Antigen (10 ng), Blue line: Antigen (50 ng), Red line: Antigen (100 ng)

Western Blotting

Image 3. Western blot analysis using CD148 mAb against human CD148 (AA: extra 36-210) recombinant protein. (Expected MW is 44.3 kDa)

Please check the [product details page](#) for more images. Overall 4 images are available for ABIN7193257.