

Datasheet for ABIN7193261
anti-LILRB5 antibody (AA 24-164)[Go to Product page](#)

4 Images

Overview

Quantity:	0.1 mg
Target:	LILRB5
Binding Specificity:	AA 24-164
Reactivity:	Human
Host:	Mouse
Clonality:	Monoclonal
Conjugate:	This LILRB5 antibody is un-conjugated
Application:	ELISA, Western Blotting (WB), Immunohistochemistry (IHC), Flow Cytometry (FACS), Immunocytochemistry (ICC), Neutralization (Neut)

Product Details

Immunogen:	Purified recombinant fragment of human LILRB5 (AA: extra 24-164) expressed in E. coli.
Clone:	6D3C8
Isotype:	IgG1
Purification:	purified

Target Details

Target:	LILRB5
Alternative Name:	LILRB5 (LILRB5 Products)
Background:	Description: This gene is a member of the leukocyte immunoglobulin-like receptor (LIR) family,

Target Details

which is found in a gene cluster at chromosomal region 19q13.4. The encoded protein belongs to the subfamily B class of LIR receptors which contain two or four extracellular immunoglobulin domains, a transmembrane domain, and two to four cytoplasmic immunoreceptor tyrosine-based inhibitory motifs (ITIMs). Several other LIR subfamily B receptors are expressed on immune cells where they bind to MHC class I molecules on antigen-presenting cells and inhibit stimulation of an immune response. Multiple transcript variants encoding different isoforms have been found for this gene.

Aliases: LIR8, CD85C, LIR-8

Molecular Weight:	64.1 kDa
-------------------	----------

Gene ID:	10990
----------	-------

Application Details

Application Notes:	ELISA: 1:10000, WB: 1:500 - 1:2000, FCM: 1:200 - 1:400, ICC: N/A, IHC: N/A
--------------------	--

Restrictions:	For Research Use only
---------------	-----------------------

Handling

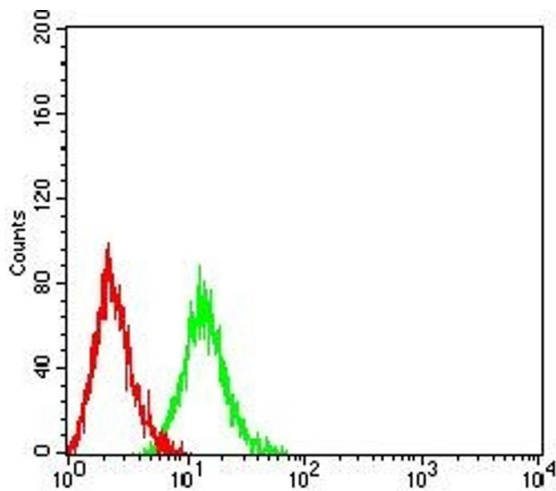
Buffer:	Purified antibody in PBS with 0.05 % sodium azide
---------	---

Preservative:	Sodium azide
---------------	--------------

Precaution of Use:	This product contains Sodium azide: a POISONOUS AND HAZARDOUS SUBSTANCE which should be handled by trained staff only.
--------------------	--

Storage:	4 °C/-20 °C
----------	-------------

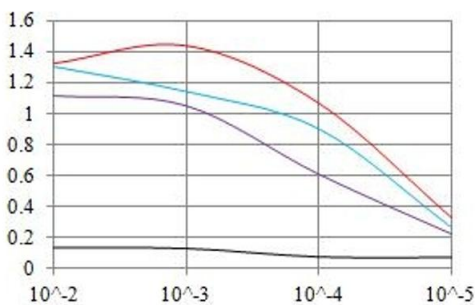
Storage Comment:	4°C, -20°C for long term storage
------------------	----------------------------------



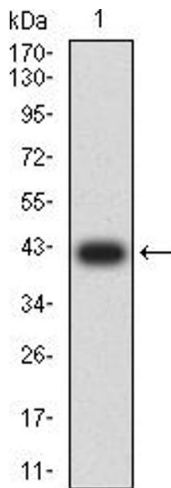
Flow Cytometry

Image 1. Flow cytometric analysis of HL-60 cells using LILRB5 mouse mAb (green) and negative control (red).

O.D. ELISA Result



— Control Antigen = 100ng — Antigen = 10ng
— Antigen = 50ng — Antigen = 100ng



ELISA

Image 2. Black line: Control Antigen (100 ng),Purple line: Antigen (10 ng), Blue line: Antigen (50 ng), Red line:Antigen (100 ng)

Western Blotting

Image 3. Western blot analysis using LILRB5 mAb against human LILRB5 (AA: extra 24-164) recombinant protein. (Expected MW is 41.5 kDa)

Please check the [product details page](#) for more images. Overall 4 images are available for ABIN7193261.