

Datasheet for ABIN7193271  
**anti-CHRM5 antibody**



[Go to Product page](#)

4 Images

Overview

Quantity:	0.1 mg
Target:	CHRM5
Reactivity:	Human
Host:	Mouse
Clonality:	Monoclonal
Conjugate:	This CHRM5 antibody is un-conjugated
Application:	Western Blotting (WB), ELISA, Immunohistochemistry (IHC), Immunocytochemistry (ICC), Flow Cytometry (FACS), Neutralization (Neut)

Product Details

Immunogen:	Purified recombinant fragment of human CHRM5 expressed in E. coli.
Clone:	7E5H11
Isotype:	IgG1
Purification:	purified

Target Details

Target:	CHRM5
Alternative Name:	CHRM5 ( <a href="#">CHRM5 Products</a> )
Background:	Description: The protein encoded by this gene is structurally similar to G protein-coupled receptors and is highly expressed in endothelial cells. It binds the ligand sphingosine-1-phosphate with high affinity and high specificity, and suggested to be involved in the processes

## Target Details

that regulate the differentiation of endothelial cells. Activation of this receptor induces cell-cell adhesion. Alternative splicing results in multiple transcript variants.

Aliases: HM5

Molecular Weight: 42.8 kDa

Gene ID: 1133

Pathways: [Synaptic Membrane](#)

## Application Details

Application Notes: ELISA: 1:10000, WB: 1:500 - 1:2000, FCM: 1:200 - 1:400, ICC: N/A, IHC: N/A

Restrictions: For Research Use only

## Handling

Buffer: Purified antibody in PBS with 0.05 % sodium azide

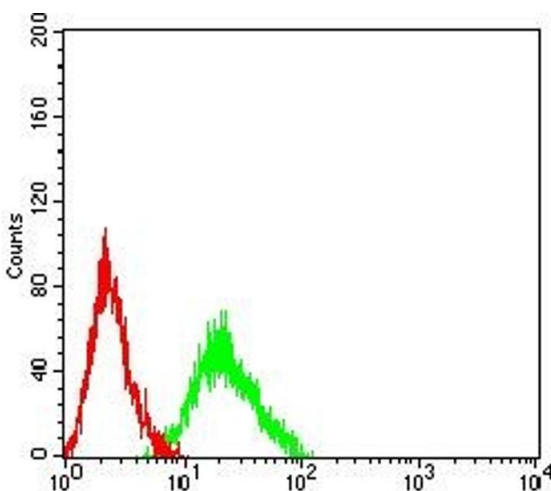
Preservative: Sodium azide

Precaution of Use: This product contains Sodium azide: a POISONOUS AND HAZARDOUS SUBSTANCE which should be handled by trained staff only.

Storage: 4 °C/-20 °C

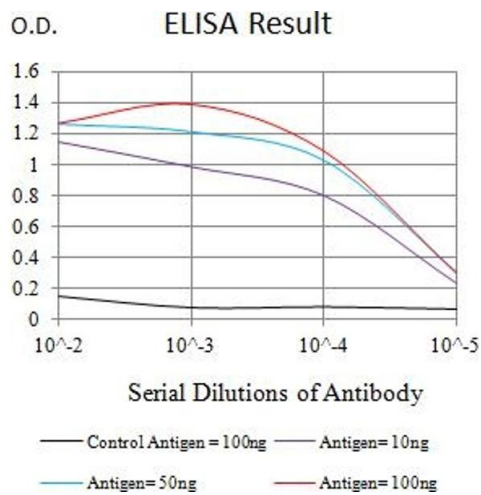
Storage Comment: 4°C, -20°C for long term storage

## Images



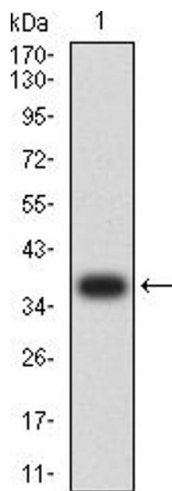
### Flow Cytometry

**Image 1.** Flow cytometric analysis of HL-60 cells using CHRM5 mouse mAb (green) and negative control (red).



**ELISA**

**Image 2.** Black line: Control Antigen (100 ng),Purple line: Antigen (10 ng), Blue line: Antigen (50 ng), Red line:Antigen (100 ng)



**Western Blotting**

**Image 3.** Western blot analysis using CHRM5 mAb against human CHRM5 recombinant protein. (Expected MW is 37.4 kDa)

Please check the [product details page](#) for more images. Overall 4 images are available for ABIN7193271.