

Datasheet for ABIN7193274 **anti-CXCR2 antibody**

6 Images



[Go to Product page](#)

Overview

Quantity:	100 µL
Target:	CXCR2
Reactivity:	Human
Host:	Mouse
Clonality:	Monoclonal
Conjugate:	This CXCR2 antibody is un-conjugated
Application:	ELISA, Immunohistochemistry (IHC), Flow Cytometry (FACS), Immunocytochemistry (ICC)

Product Details

Purpose:	CD182 Antibody
Immunogen:	Purified recombinant fragment of human CD182 expressed in E. Coli.
Clone:	5F7A11
Isotype:	IgG1
Purification:	Purified antibody

Target Details

Target:	CXCR2
Alternative Name:	CD182 (CXCR2 Products)
Background:	Description: The protein encoded by this gene is a member of the G-protein-coupled receptor family. This

Target Details

protein is a receptor for interleukin 8 (IL8). It binds to IL8 with high affinity, and transduces the signal through a G-protein activated second messenger system. This receptor also binds to chemokine (C-X-C motif) ligand 1 (CXCL1/MGSA), a protein with melanoma growth stimulating activity, and has been shown to be a major component required for serum-dependent melanoma cell growth. This receptor mediates neutrophil migration to sites of inflammation. The angiogenic effects of IL8 in intestinal microvascular endothelial cells are found to be mediated by this receptor. Knockout studies in mice suggested that this receptor controls the positioning of oligodendrocyte precursors in developing spinal cord by arresting their migration. This gene, IL8RA, a gene encoding another high affinity IL8 receptor, as well as IL8RBP, a pseudogene of IL8RB, form a gene cluster in a region mapped to chromosome 2q33-q36. Alternatively spliced variants, encoding the same protein, have been identified.

Aliases: CXCR2, IL8R2, IL8RA, IL8RB, CMKAR2, CDw128b

Molecular Weight: 40.8kDa

Gene ID: 3579

UniProt: [P25025](#)

Pathways: [cAMP Metabolic Process](#)

Application Details

Application Notes: ELISA: 1/10000
FCM: 1/200 - 1/400
ICC: 1/100

Restrictions: For Research Use only

Handling

Format: Liquid

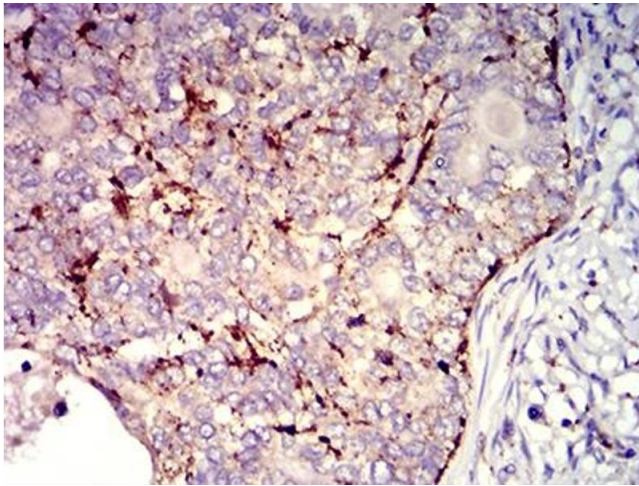
Buffer: Purified antibody in PBS with 0.05 % sodium azide.

Preservative: Sodium azide

Precaution of Use: This product contains Sodium azide: a POISONOUS AND HAZARDOUS SUBSTANCE which should be handled by trained staff only.

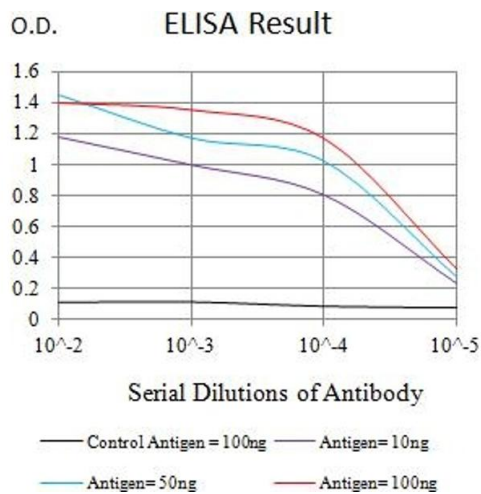
Storage: 4 °C,-20 °C

Storage Comment: Store at 4°C short term. Aliquot and store at -20°C long term. Avoid freeze/thaw cycles.



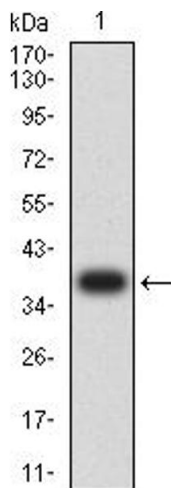
Immunohistochemistry

Image 1. Immunohistochemical analysis of paraffin-embedded cervical cancer tissues using CD182 mouse mAb with DAB staining.



ELISA

Image 2. Black line: Control Antigen (100 ng), Purple line: Antigen (10 ng), Blue line: Antigen (50 ng), Red line: Antigen (100 ng)



Western Blotting

Image 3. Western blot analysis using CD182 mAb against human CD182 recombinant protein. (Expected MW is 38.6 kDa)

Please check the [product details page](#) for more images. Overall 6 images are available for ABIN7193274.