

Datasheet for ABIN7193275
anti-LRP8 antibody (AA 42-182)[Go to Product page](#)

4 Images

Overview

Quantity:	0.1 mg
Target:	LRP8
Binding Specificity:	AA 42-182
Reactivity:	Human
Host:	Mouse
Clonality:	Monoclonal
Conjugate:	This LRP8 antibody is un-conjugated
Application:	Western Blotting (WB), ELISA, Immunohistochemistry (IHC), Immunocytochemistry (ICC), Flow Cytometry (FACS), Neutralization (Neut)

Product Details

Immunogen:	Purified recombinant fragment of human LRP8 (AA: extra 42-182) expressed in E. coli.
Clone:	7G12E2
Isotype:	IgG1
Purification:	purified

Target Details

Target:	LRP8
Alternative Name:	LRP8 (LRP8 Products)
Background:	Description: This gene encodes a member of the low density lipoprotein receptor (LDLR) family.

Target Details

Low density lipoprotein receptors are cell surface proteins that play roles in both signal transduction and receptor-mediated endocytosis of specific ligands for lysosomal degradation. The encoded protein plays a critical role in the migration of neurons during development by mediating Reelin signaling, and also functions as a receptor for the cholesterol transport protein apolipoprotein E. Expression of this gene may be a marker for major depressive disorder. Alternatively spliced transcript variants encoding multiple isoforms have been observed for this gene.

Aliases: MCI1, LRP-8, APOER2, HSZ75190

Molecular Weight:	105.6 kDa
-------------------	-----------

Gene ID:	7804
----------	------

Application Details

Application Notes:	ELISA: 1:10000, WB: 1:500 - 1:2000, FCM: 1:200 - 1:400, ICC: N/A, IHC: N/A
--------------------	--

Restrictions:	For Research Use only
---------------	-----------------------

Handling

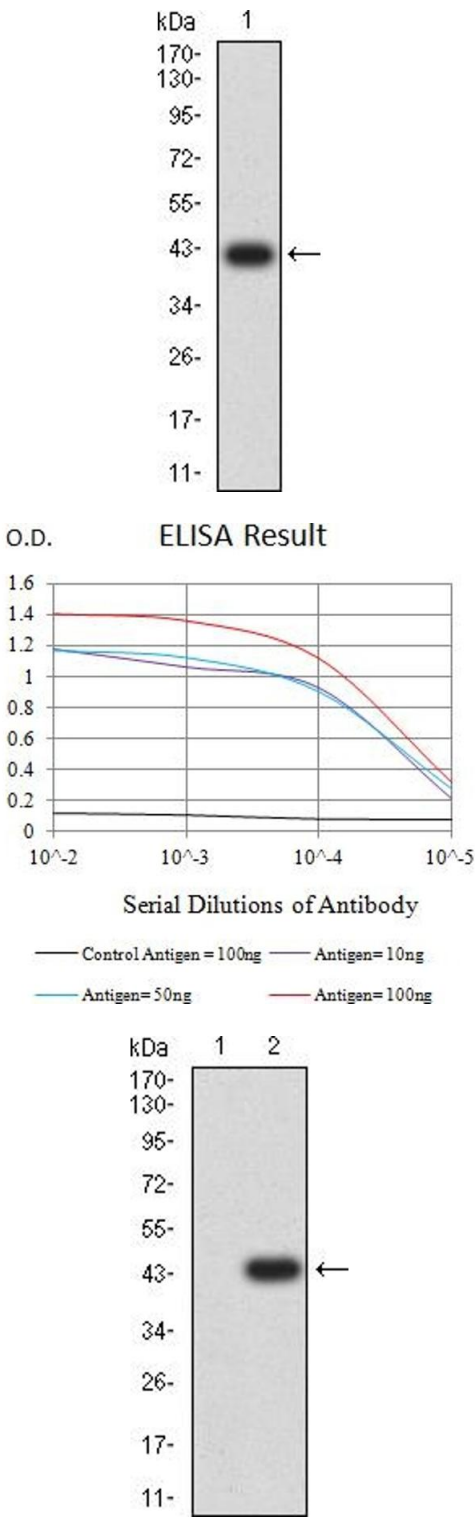
Buffer:	Purified antibody in PBS with 0.05 % sodium azide
---------	---

Preservative:	Sodium azide
---------------	--------------

Precaution of Use:	This product contains Sodium azide: a POISONOUS AND HAZARDOUS SUBSTANCE which should be handled by trained staff only.
--------------------	--

Storage:	4 °C/-20 °C
----------	-------------

Storage Comment:	4°C, -20°C for long term storage
------------------	----------------------------------



Western Blotting

Image 1. Western blot analysis using LRP8 mAb against human LRP8 (AA: extra 42-182) recombinant protein. (Expected MW is 41.4 kDa)

ELISA

Image 2. Black line: Control Antigen (100 ng),Purple line: Antigen (10 ng), Blue line: Antigen (50 ng), Red line:Antigen (100 ng)

Western Blotting

Image 3. Western blot analysis using LRP8 mAb against HEK293 (1) and LRP8 (AA: extra 42-182)-hlgGfc transfected HEK293 (2) cell lysate.

Please check the [product details page](#) for more images. Overall 4 images are available for ABIN7193275.