

Datasheet for ABIN7193281
anti-ABCB1 antibody (AA 1149-1280)[Go to Product page](#)

4 Images

Overview

Quantity:	0.1 mg
Target:	ABCB1
Binding Specificity:	AA 1149-1280
Reactivity:	Human
Host:	Mouse
Clonality:	Monoclonal
Conjugate:	This ABCB1 antibody is un-conjugated
Application:	Western Blotting (WB), Immunohistochemistry (IHC), ELISA, Flow Cytometry (FACS), Immunocytochemistry (ICC), Neutralization (Neut)

Product Details

Immunogen:	Purified recombinant fragment of human CD243 (AA: 1149-1280) expressed in E. coli.
Clone:	4G6F4
Isotype:	IgG1
Purification:	purified

Target Details

Target:	ABCB1
Alternative Name:	CD243 (ABCB1 Products)
Background:	Description: The membrane-associated protein encoded by this gene is a member of the

Target Details

superfamily of ATP-binding cassette (ABC) transporters. ABC proteins transport various molecules across extra- and intra-cellular membranes. ABC genes are divided into seven distinct subfamilies (ABC1, MDR/TAP, MRP, ALD, OABP, GCN20, White). This protein is a member of the MDR/TAP subfamily. Members of the MDR/TAP subfamily are involved in multidrug resistance. The protein encoded by this gene is an ATP-dependent drug efflux pump for xenobiotic compounds with broad substrate specificity. It is responsible for decreased drug accumulation in multidrug-resistant cells and often mediates the development of resistance to anticancer drugs. This protein also functions as a transporter in the blood-brain barrier. Mutations in this gene are associated with colchicine resistance and Inflammatory bowel disease 13. Alternative splicing and the use of alternative promoters results in multiple transcript variants.

Aliases: ABCB1, CLCS, MDR1, P-GP, PGY1, ABC20, GP170

Molecular Weight:	141.1 kDa
-------------------	-----------

Gene ID:	5243
----------	------

Application Details

Application Notes:	ELISA: 1:10000, WB: 1:500 - 1:2000, FCM: 1:200 - 1:400, ICC: N/A, IHC: N/A
--------------------	--

Restrictions:	For Research Use only
---------------	-----------------------

Handling

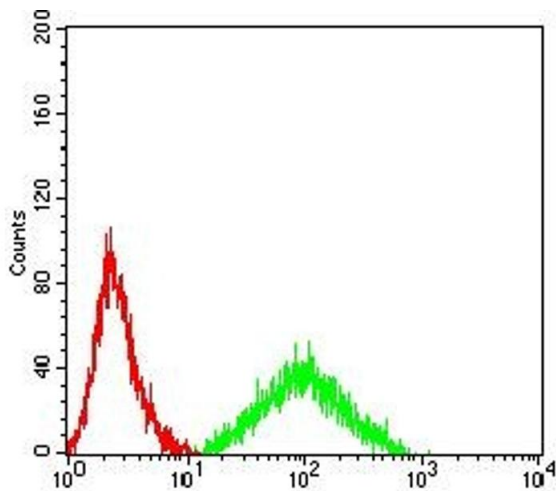
Buffer:	Purified antibody in PBS with 0.05 % sodium azide
---------	---

Preservative:	Sodium azide
---------------	--------------

Precaution of Use:	This product contains Sodium azide: a POISONOUS AND HAZARDOUS SUBSTANCE which should be handled by trained staff only.
--------------------	--

Storage:	4 °C/-20 °C
----------	-------------

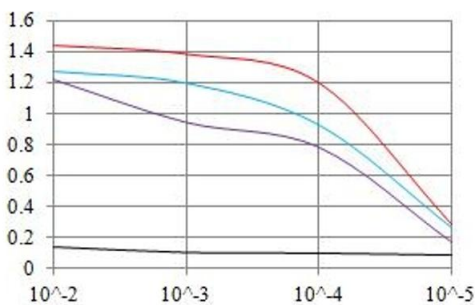
Storage Comment:	4°C, -20°C for long term storage
------------------	----------------------------------



Flow Cytometry

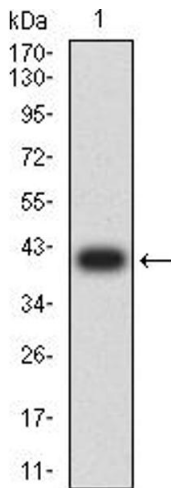
Image 1. Flow cytometric analysis of HL-60 cells using CD243 mouse mAb (green) and negative control (red).

O.D. ELISA Result



Serial Dilutions of Antibody

— Control Antigen = 100ng — Antigen = 10ng
— Antigen = 50ng — Antigen = 100ng



ELISA

Image 2. Black line: Control Antigen (100 ng), Purple line: Antigen (10 ng), Blue line: Antigen (50 ng), Red line: Antigen (100 ng)

Western Blotting

Image 3. Western blot analysis using CD243 mAb against human CD243 (AA: 1149-1280) recombinant protein. (Expected MW is 40.5 kDa)

Please check the [product details page](#) for more images. Overall 4 images are available for ABIN7193281.