

Datasheet for ABIN7193282
anti-LTBR antibody (AA 31-227)

5 Images

[Go to Product page](#)

Overview

Quantity:	0.1 mg
Target:	LTBR
Binding Specificity:	AA 31-227
Reactivity:	Human, Mouse
Host:	Mouse
Clonality:	Monoclonal
Conjugate:	This LTBR antibody is un-conjugated
Application:	Western Blotting (WB), ELISA, Immunohistochemistry (IHC), Flow Cytometry (FACS), Immunocytochemistry (ICC), Neutralization (Neut)

Product Details

Immunogen:	Purified recombinant fragment of human LTBR (AA: extra 31-227) expressed in E. coli.
Clone:	1D1C5C8
Isotype:	IgG2a
Purification:	purified

Target Details

Target:	LTBR
Alternative Name:	LTBR (LTBR Products)
Background:	Description: This gene encodes a member of the tumor necrosis factor receptor superfamily.

Target Details

The major ligands of this receptor include lymphotoxin alpha/beta and tumor necrosis factor ligand superfamily member 14. The encoded protein plays a role in signalling during the development of lymphoid and other organs, lipid metabolism, immune response, and programmed cell death. Activity of this receptor has also been linked to carcinogenesis. Alternatively spliced transcript variants encoding multiple isoforms have been observed. Aliases: TNFCR, TNFR3, D12S370, TNFR-RP, TNFRSF3, TNFR2-RP, LT-BETA-R, TNF-R-III

Molecular Weight:	46.7 kDa
-------------------	----------

Gene ID:	4055
----------	------

Pathways:	NF-kappaB Signaling
-----------	-------------------------------------

Application Details

Application Notes:	ELISA: 1:10000, WB: 1:500 - 1:2000, FCM: 1:200 - 1:400, ICC: N/A, IHC: N/A
--------------------	--

Restrictions:	For Research Use only
---------------	-----------------------

Handling

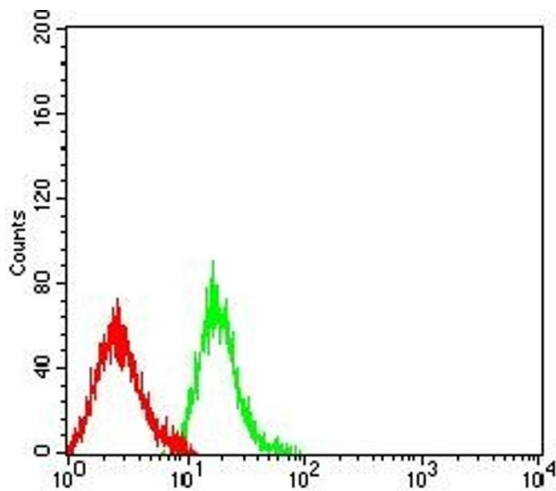
Buffer:	Purified antibody in PBS with 0.05 % sodium azide
---------	---

Preservative:	Sodium azide
---------------	--------------

Precaution of Use:	This product contains Sodium azide: a POISONOUS AND HAZARDOUS SUBSTANCE which should be handled by trained staff only.
--------------------	--

Storage:	4 °C/-20 °C
----------	-------------

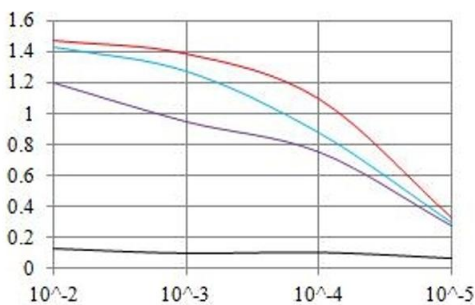
Storage Comment:	4°C, -20°C for long term storage
------------------	----------------------------------



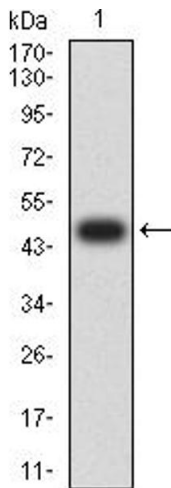
Flow Cytometry

Image 1. Flow cytometric analysis of HL-60 cells using LTBR mouse mAb (green) and negative control (red).

ELISA Result



— Control Antigen = 100ng — Antigen = 10ng
— Antigen = 50ng — Antigen = 100ng



ELISA

Image 2. Black line: Control Antigen (100 ng), Purple line: Antigen (10 ng), Blue line: Antigen (50 ng), Red line: Antigen (100 ng)

Western Blotting

Image 3. Western blot analysis using LTBR mAb against human LTBR (AA: extra 31-227) recombinant protein. (Expected MW is 47.7 kDa)

Please check the [product details page](#) for more images. Overall 5 images are available for ABIN7193282.