

Datasheet for ABIN7193286  
**anti-VTCN1 antibody (AA 25-259)**

## 3 Images

[Go to Product page](#)

## Overview

Quantity:	0.1 mg
Target:	VTCN1
Binding Specificity:	AA 25-259
Reactivity:	Human
Host:	Mouse
Clonality:	Monoclonal
Conjugate:	This VTCN1 antibody is un-conjugated
Application:	Western Blotting (WB), ELISA, Immunohistochemistry (IHC), Flow Cytometry (FACS), Immunocytochemistry (ICC), Neutralization (Neut)

## Product Details

Immunogen:	Purified recombinant fragment of human B7H4 (AA: extra 25-259) expressed in HEK293 cells.
Clone:	3A9C12
Isotype:	IgG1
Purification:	purified

## Target Details

Target:	VTCN1
Alternative Name:	B7H4 ( <a href="#">VTCN1 Products</a> )
Background:	Description: This gene encodes a protein belonging to the B7 costimulatory protein family.

## Target Details

Proteins in this family are present on the surface of antigen-presenting cells and interact with ligand bound to receptors on the surface of T cells. Studies have shown that high levels of the encoded protein has been correlated with tumor progression. A pseudogene of this gene is located on chromosome 20. Multiple transcript variants encoding different isoforms have been found for this gene.

Aliases: VTCN1, B7X, B7S1, B7-H4, B7h.5, VCTN1, PRO1291

Molecular Weight: 30.9 kDa

Gene ID: 79679

## Application Details

Application Notes: ELISA: 1:10000, WB: 1:500 - 1:2000, FCM: 1:200 - 1:400, ICC: N/A, IHC: N/A

Restrictions: For Research Use only

## Handling

Buffer: Purified antibody in PBS with 0.05 % sodium azide

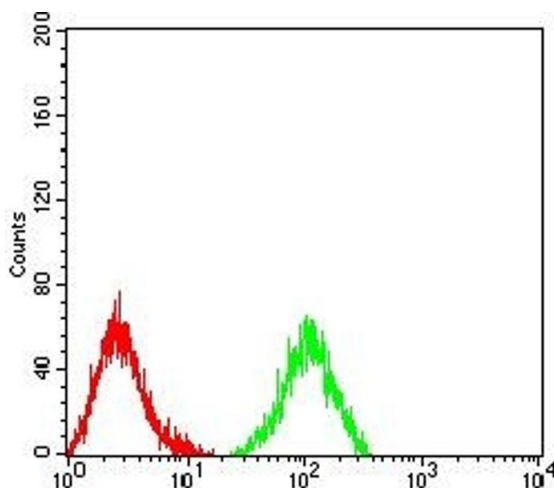
Preservative: Sodium azide

Precaution of Use: This product contains Sodium azide: a POISONOUS AND HAZARDOUS SUBSTANCE which should be handled by trained staff only.

Storage: 4 °C/-20 °C

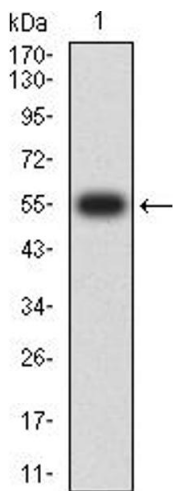
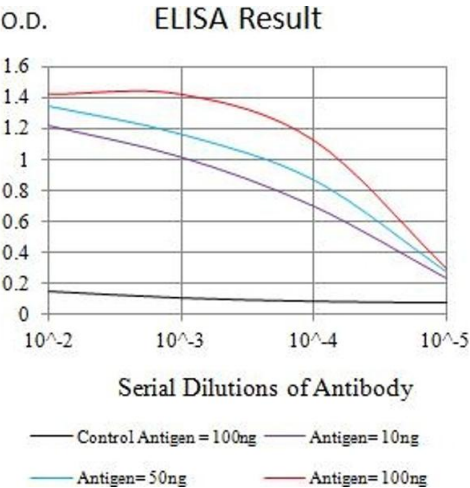
Storage Comment: 4°C, -20°C for long term storage

## Images



### Flow Cytometry

**Image 1.** Flow cytometric analysis of HL-60 cells using B7H4 mouse mAb (green) and negative control (red).



### ELISA

**Image 2.** Black line: Control Antigen (100 ng),Purple line: Antigen (10 ng), Blue line: Antigen (50 ng), Red line:Antigen (100 ng)

### Western Blotting

**Image 3.** Western blot analysis using B7H4 mAb against human B7H4 (AA: extra 25-259) recombinant protein. (Expected MW is 55.6 kDa)