

Datasheet for ABIN7193300

**anti-Angiotensin I Converting Enzyme 1 antibody (AA 30-182)****3** Images[Go to Product page](#)

## Overview

Quantity:	0.1 mg
Target:	Angiotensin I Converting Enzyme 1 (ACE)
Binding Specificity:	AA 30-182
Reactivity:	Human
Host:	Mouse
Clonality:	Monoclonal
Conjugate:	This Angiotensin I Converting Enzyme 1 antibody is un-conjugated
Application:	Western Blotting (WB), ELISA, Immunohistochemistry (IHC), Flow Cytometry (FACS), Immunocytochemistry (ICC), Neutralization (Neut)

## Product Details

Immunogen:	Purified recombinant fragment of human CD143 (AA: extra 30-182) expressed in E. coli.
Clone:	3H7E4
Isotype:	IgG1
Purification:	purified

## Target Details

Target:	Angiotensin I Converting Enzyme 1 (ACE)
Alternative Name:	CD143 ( <a href="#">ACE Products</a> )
Background:	Description: This gene encodes an enzyme involved in catalyzing the conversion of angiotensin

## Target Details

I into a physiologically active peptide angiotensin II. Angiotensin II is a potent vasopressor and aldosterone-stimulating peptide that controls blood pressure and fluid-electrolyte balance. This enzyme plays a key role in the renin-angiotensin system. Many studies have associated the presence or absence of a 287 bp Alu repeat element in this gene with the levels of circulating enzyme or cardiovascular pathophysiology. Multiple alternatively spliced transcript variants encoding different isoforms have been identified, and two most abundant spliced variants encode the somatic form and the testicular form, respectively, that are equally active.

Aliases: ACE, DCP, ACE1, DCP1

Molecular Weight: 150 kDa

Gene ID: 1636

Pathways: [ACE Inhibitor Pathway](#), [Peptide Hormone Metabolism](#), [Regulation of Systemic Arterial Blood Pressure by Hormones](#), [Feeding Behaviour](#), [Smooth Muscle Cell Migration](#)

## Application Details

Application Notes: ELISA: 1:10000, WB: 1:500 - 1:2000, FCM: N/A, ICC: N/A, IHC: N/A

Restrictions: For Research Use only

## Handling

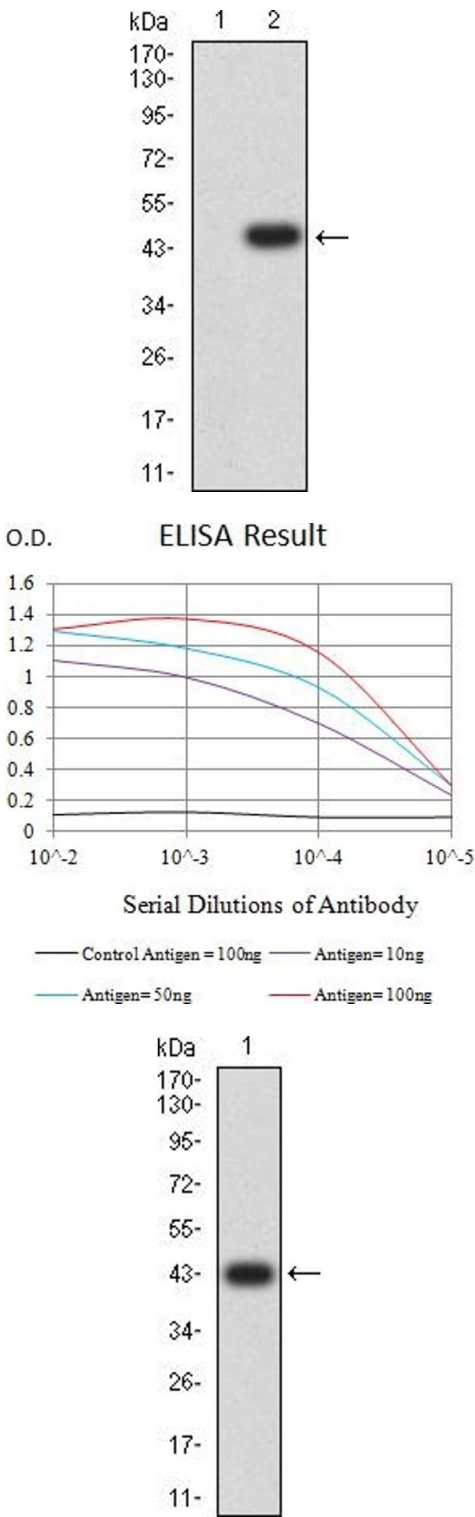
Buffer: Purified antibody in PBS with 0.05 % sodium azide

Preservative: Sodium azide

Precaution of Use: This product contains Sodium azide: a POISONOUS AND HAZARDOUS SUBSTANCE which should be handled by trained staff only.

Storage: 4 °C/-20 °C

Storage Comment: 4°C, -20°C for long term storage



Western Blotting

**Image 1.** Western blot analysis using CD143 mAb against HEK293 (1) and CD143 (AA: extra 30-182)-hlgGfc transfected HEK293 (2) cell lysate.

ELISA

**Image 2.** Black line: Control Antigen (100 ng),Purple line: Antigen (10 ng), Blue line: Antigen (50 ng), Red line:Antigen (100 ng)

Western Blotting

**Image 3.** Western blot analysis using CD143 mAb against human CD143 (AA: extra 30-182) recombinant protein. (Expected MW is 42.9 kDa)