

Datasheet for ABIN7193301
anti-SIGLEC5 antibody (AA 17-230)[Go to Product page](#)

4 Images

Overview

Quantity:	0.1 mg
Target:	SIGLEC5
Binding Specificity:	AA 17-230
Reactivity:	Human
Host:	Mouse
Clonality:	Monoclonal
Conjugate:	This SIGLEC5 antibody is un-conjugated
Application:	Western Blotting (WB), ELISA, Immunohistochemistry (IHC), Immunocytochemistry (ICC), Flow Cytometry (FACS), Neutralization (Neut)

Product Details

Immunogen:	Purified recombinant fragment of human CD170 (AA: extra 17-230) expressed in E. coli.
Clone:	3F5A3
Isotype:	IgG2a
Purification:	purified

Target Details

Target:	SIGLEC5
Alternative Name:	CD170 (SIGLEC5 Products)
Background:	Description: This gene encodes a member of the sialic acid-binding immunoglobulin-like lectin

Target Details

(Siglec) family. These cell surface lectins are characterized by structural motifs in the immunoglobulin (Ig)-like domains and sialic acid recognition sites in the first Ig V set domain. The encoded protein is a member of the CD33-related subset of Siglecs and inhibits the activation of several cell types including monocytes, macrophages and neutrophils. Binding of group B Streptococcus (GBS) to the encoded protein plays a role in GBS immune evasion.

Aliases: SIGLEC5, OBBP2, CD33L2, OB-BP2, SIGLEC-5

Molecular Weight: 60.7 kDa

Gene ID: 8778

Application Details

Application Notes: ELISA: 1:10000, WB: 1:500 - 1:2000, FCM: 1:200 - 1:400, ICC: N/A, IHC: N/A

Restrictions: For Research Use only

Handling

Buffer: Purified antibody in PBS with 0.05 % sodium azide

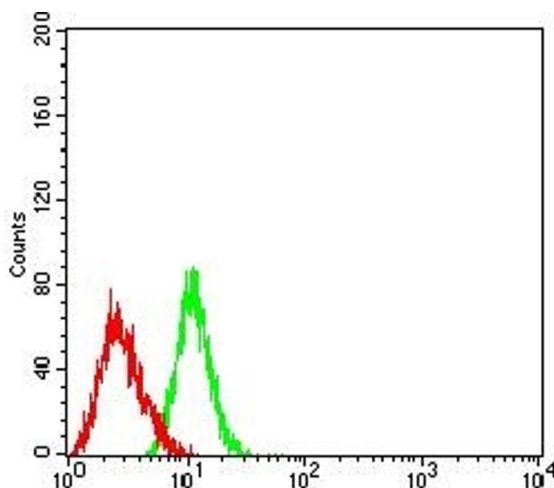
Preservative: Sodium azide

Precaution of Use: This product contains Sodium azide: a POISONOUS AND HAZARDOUS SUBSTANCE which should be handled by trained staff only.

Storage: 4 °C/-20 °C

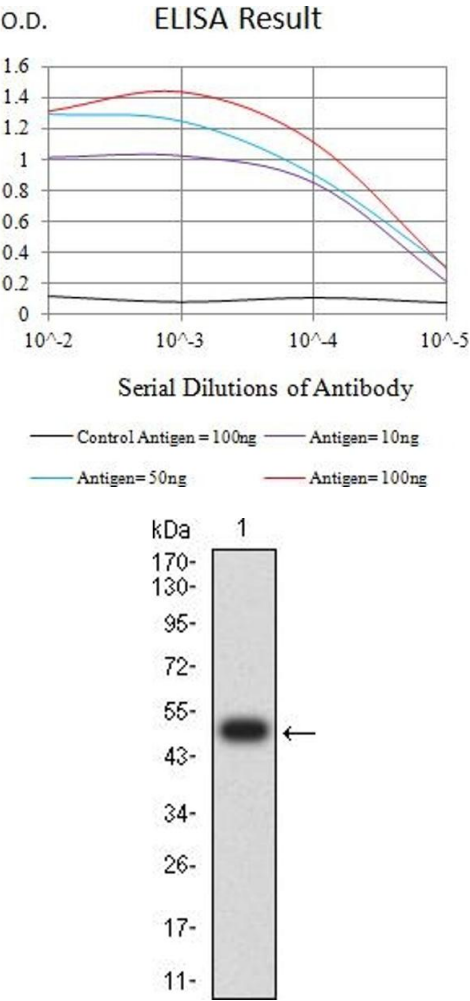
Storage Comment: 4°C, -20°C for long term storage

Images



Flow Cytometry

Image 1. Flow cytometric analysis of HL-60 cells using CD170 mouse mAb (green) and negative control (red).



ELISA

Image 2. Black line: Control Antigen (100 ng),Purple line: Antigen (10 ng), Blue line: Antigen (50 ng), Red line:Antigen (100 ng)

Western Blotting

Image 3. Western blot analysis using CD170 mAb against human CD170 (AA: extra 17-230) recombinant protein. (Expected MW is 50.3 kDa)

Please check the [product details page](#) for more images. Overall 4 images are available for ABIN7193301.