



Datasheet for ABIN7193302
anti-DCL1 antibody (AA 23-168)



[Go to Product page](#)

3 Images

Overview

Quantity:	0.1 mg
Target:	DCL1 (CD302)
Binding Specificity:	AA 23-168
Reactivity:	Human
Host:	Mouse
Clonality:	Monoclonal
Conjugate:	This DCL1 antibody is un-conjugated
Application:	Western Blotting (WB), ELISA, Immunohistochemistry (IHC), Flow Cytometry (FACS), Immunocytochemistry (ICC), Neutralization (Neut)

Product Details

Immunogen:	Purified recombinant fragment of human CD302 (AA: extra 23-168) expressed in E. coli.
Clone:	6B1F6
Isotype:	IgG1
Purification:	purified

Target Details

Target:	DCL1 (CD302)
Alternative Name:	CD302 (CD302 Products)
Background:	Description: CD302 is a C-type lectin receptor involved in cell adhesion and migration, as well as

Target Details

endocytosis and phagocytosis
Aliases: DCL1, DCL-1, BIMLEC, CLEC13A

Molecular Weight: 26.2 kDa

Gene ID: 9936

Pathways: [Regulation of Actin Filament Polymerization](#)

Application Details

Application Notes: ELISA: 1:10000, WB: 1:500 - 1:2000, FCM: N/A, ICC: N/A, IHC: N/A

Restrictions: For Research Use only

Handling

Buffer: Purified antibody in PBS with 0.05 % sodium azide

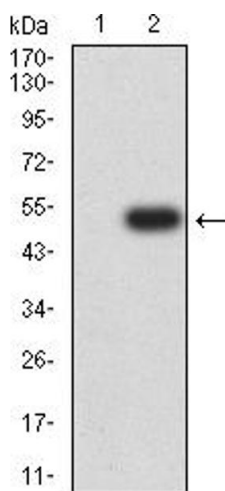
Preservative: Sodium azide

Precaution of Use: This product contains Sodium azide: a POISONOUS AND HAZARDOUS SUBSTANCE which should be handled by trained staff only.

Storage: 4 °C/-20 °C

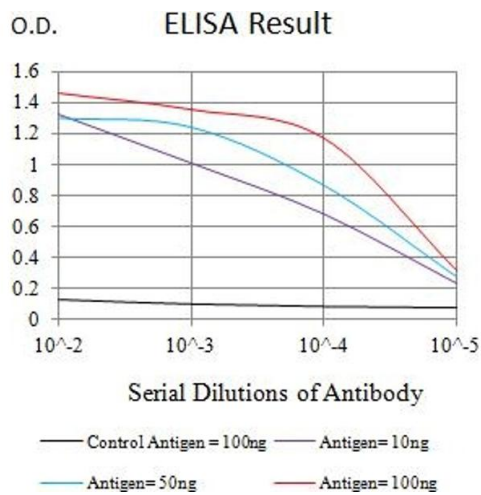
Storage Comment: 4°C, -20°C for long term storage

Images



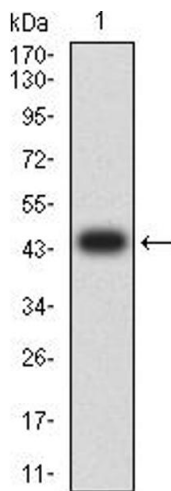
Western Blotting

Image 1. Western blot analysis using CD302 mAb against HEK293 (1) and CD302 (AA: extra 23-168)-hIgGfc transfected HEK293 (2) cell lysate.



ELISA

Image 2. Black line: Control Antigen (100 ng),Purple line: Antigen (10 ng), Blue line: Antigen (50 ng), Red line:Antigen (100 ng)



Western Blotting

Image 3. Western blot analysis using CD302 mAb against human CD302 (AA: extra 23-168) recombinant protein. (Expected MW is 46.8 kDa)