

Datasheet for ABIN7193303  
**anti-JAM2 antibody (AA 29-238)**[Go to Product page](#)

## 6 Images

## Overview

Quantity:	0.1 mg
Target:	JAM2
Binding Specificity:	AA 29-238
Reactivity:	Human
Host:	Mouse
Clonality:	Monoclonal
Conjugate:	This JAM2 antibody is un-conjugated
Application:	Western Blotting (WB), ELISA, Immunohistochemistry (IHC), Immunocytochemistry (ICC), Neutralization (Neut), Flow Cytometry (FACS)

## Product Details

Immunogen:	Purified recombinant fragment of human CD322 (AA: extra 29-238) expressed in E. coli.
Clone:	7E4C5
Isotype:	IgG1
Purification:	purified

## Target Details

Target:	JAM2
Alternative Name:	CD322 ( <a href="#">JAM2 Products</a> )
Background:	Description: This gene belongs to the immunoglobulin superfamily, and the junctional adhesion

## Target Details

molecule (JAM) family. The protein encoded by this gene is a type I membrane protein that is localized at the tight junctions of both epithelial and endothelial cells. It acts as an adhesive ligand for interacting with a variety of immune cell types, and may play a role in lymphocyte homing to secondary lymphoid organs. Alternatively spliced transcript variants have been found for this gene.

Aliases: JAM2, JAMB, JAM-B, VEJAM, PRO245, VE-JAM, C21orf43

Molecular Weight: 33.2 kDa

Gene ID: 58494

## Application Details

Application Notes: ELISA: 1:10000, WB: 1:500 - 1:2000, FCM: 1:200 - 1:400, ICC: N/A, IHC: N/A, ICC: 1:100

Restrictions: For Research Use only

## Handling

Buffer: Purified antibody in PBS with 0.05 % sodium azide

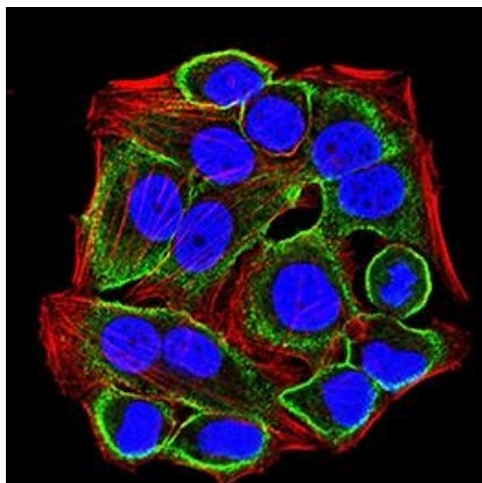
Preservative: Sodium azide

Precaution of Use: This product contains Sodium azide: a POISONOUS AND HAZARDOUS SUBSTANCE which should be handled by trained staff only.

Storage: 4 °C/-20 °C

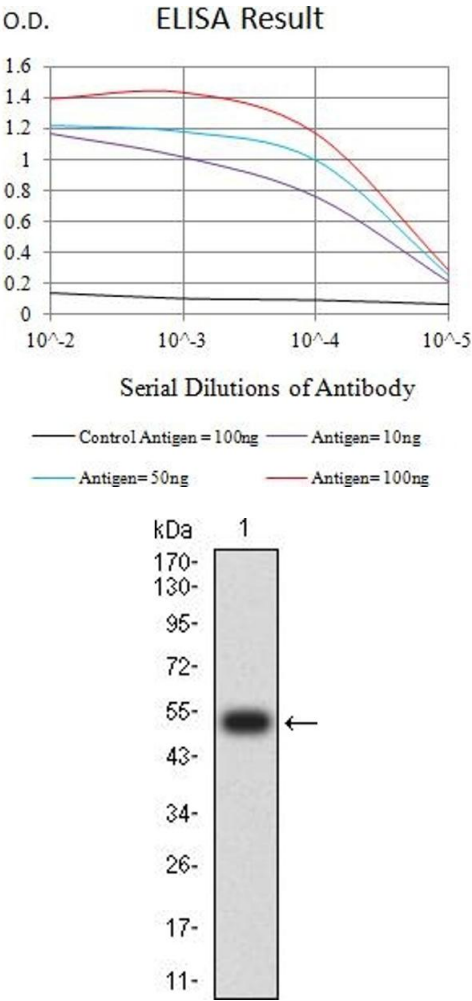
Storage Comment: 4°C, -20°C for long term storage

## Images



### Immunofluorescence

**Image 1.** Immunofluorescence analysis of HeLa cells using CD322 mouse mAb (green). Blue: DRAQ5 fluorescent DNA dye. Red: Actin filaments have been labeled with Alexa Fluor- 555 phalloidin. Secondary antibody from Fisher (Cat#: 35503)



### ELISA

**Image 2.** Black line: Control Antigen (100 ng),Purple line: Antigen (10 ng), Blue line: Antigen (50 ng), Red line:Antigen (100 ng)

### Western Blotting

**Image 3.** Western blot analysis using CD322 mAb against human CD322 (AA: extra 29-238) recombinant protein. (Expected MW is 53.3 kDa)

Please check the [product details page](#) for more images. Overall 6 images are available for ABIN7193303.