

Datasheet for ABIN7193308
anti-FCRL2 antibody (AA 20-253)[Go to Product page](#)

4 Images

Overview

Quantity:	0.1 mg
Target:	FCRL2
Binding Specificity:	AA 20-253
Reactivity:	Human
Host:	Mouse
Clonality:	Monoclonal
Conjugate:	This FCRL2 antibody is un-conjugated
Application:	Western Blotting (WB), ELISA, Immunohistochemistry (IHC), Flow Cytometry (FACS), Immunocytochemistry (ICC), Neutralization (Neut)

Product Details

Immunogen:	Purified recombinant fragment of human CD307B (AA: extra 20-253) expressed in E. coli.
Clone:	7B12A3
Isotype:	IgG1
Purification:	purified

Target Details

Target:	FCRL2
Alternative Name:	CD307B (FCRL2 Products)
Background:	Description: This gene encodes a member of the immunoglobulin receptor superfamily and is

Target Details

one of several Fc receptor-like glycoproteins clustered on the long arm of chromosome 1. The encoded protein has four extracellular C2-type immunoglobulin domains, a transmembrane domain and a cytoplasmic domain that contains one immunoreceptor-tyrosine activation motif and two immunoreceptor-tyrosine inhibitory motifs. This protein may be a prognostic marker for chronic lymphocytic leukemia. Alternatively spliced transcript variants have been described, but their biological validity has not been determined.

Aliases: FCRL2, FCRH2, IFGP4, IRTA4, SPAP1, SPAP1A, SPAP1B, SPAP1C

Molecular Weight:	55.5 kDa
-------------------	----------

Gene ID:	79368
----------	-------

Application Details

Application Notes:	ELISA: 1:10000, WB: 1:500 - 1:2000, FCM: 1:200 - 1:400, ICC: N/A, IHC: N/A
--------------------	--

Restrictions:	For Research Use only
---------------	-----------------------

Handling

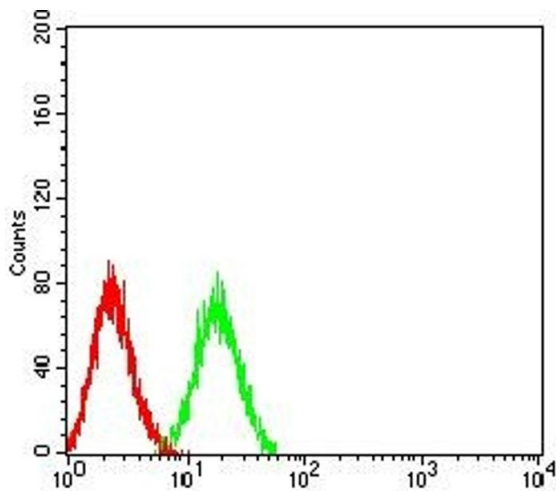
Buffer:	Purified antibody in PBS with 0.05 % sodium azide
---------	---

Preservative:	Sodium azide
---------------	--------------

Precaution of Use:	This product contains Sodium azide: a POISONOUS AND HAZARDOUS SUBSTANCE which should be handled by trained staff only.
--------------------	--

Storage:	4 °C/-20 °C
----------	-------------

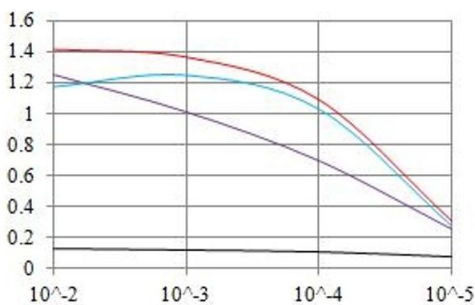
Storage Comment:	4°C, -20°C for long term storage
------------------	----------------------------------



Flow Cytometry

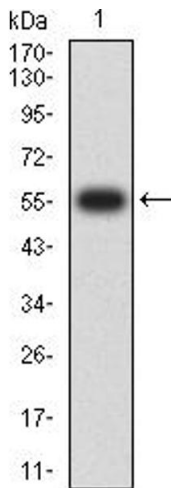
Image 1. Flow cytometric analysis of HL-60 cells using CD307B mouse mAb (green) and negative control (red).

O.D. ELISA Result



Serial Dilutions of Antibody

— Control Antigen = 100ng — Antigen = 10ng
— Antigen = 50ng — Antigen = 100ng



ELISA

Image 2. Black line: Control Antigen (100 ng), Purple line: Antigen (10 ng), Blue line: Antigen (50 ng), Red line: Antigen (100 ng)

Western Blotting

Image 3. Western blot analysis using CD307B mAb against human CD307B (AA: extra 20-253) recombinant protein. (Expected MW is 56 kDa)

Please check the [product details page](#) for more images. Overall 4 images are available for ABIN7193308.